

**FOR IMMEDIATE RELEASE**  
 May 6, 2026

Contact:  
 Mathew Barewicz, E & LMI Director, Department of Labor  
 802-828-4153 | [mathew.barewicz@vermont.gov](mailto:mathew.barewicz@vermont.gov)

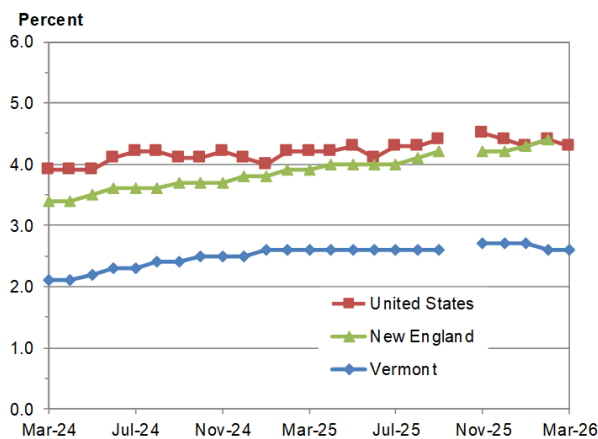
## Vermont’s Unemployment Rate Remained at 2.6 Percent in March

Today, the Vermont Department of Labor released data on the Vermont economy for the time period covering March 2026. According to household data, the seasonally-adjusted statewide unemployment rate for March was 2.6 percent. This reflects no change from the prior month’s revised estimate. The civilian labor force participation rate was 62.9 percent in March, a decrease of three-tenths of one percentage point from the prior month’s revised estimate.

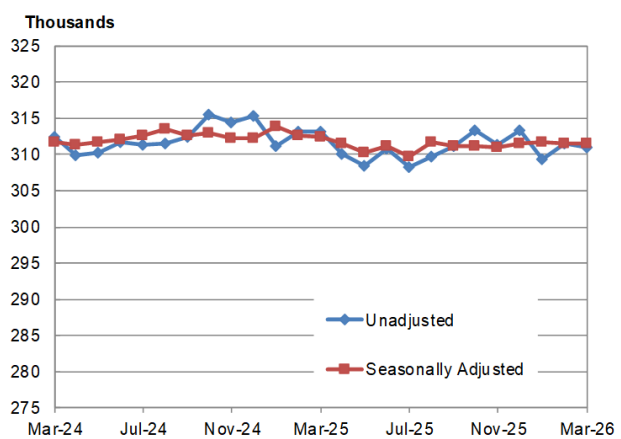
### Commissioner’s Message

“Every year, March is a period of transition in Vermont – not only because of the weather but also because of seasonal industries. The over-the-year data for March 2026 gives a preliminary indication of a strong winter hiring season for Leisure & Hospitality businesses,” said Kendal Smith, Commissioner of the Vermont Department of Labor. “Looking forward, many industries will be ramping up hiring activities as the weather improves. To support these hiring efforts, the Department has multiple hiring events this month. To learn more about these events, as either a jobseeker or a hiring employer, you can visit <https://www.vermontjoblink.com/events> for the most up to date information.”

**Chart 1. Unemployment Rate, seasonally adjusted**



**Chart 2. Vermont Nonfarm Payroll Employment**



## ***State of Vermont Overview***

The Vermont seasonally-adjusted unemployment rate held at 2.6 percent in March. The comparable United States rate in March was 4.3 percent, a decrease of one-tenth of one percentage point from the revised February estimate. The seasonally-adjusted Vermont data for March show the Vermont civilian labor force decreased by 1,523 from the prior month's revised estimate (see Table 1). The number of employed persons decreased by 1,360 and the number of unemployed persons decreased by 163. None of the changes were statistically significant in the seasonally-adjusted series.

The March unemployment rates for Vermont's 14 counties ranged from 1.9 percent in Chittenden County to 5.7 percent in Orleans County (note: county unemployment rates are not seasonally-adjusted – see Table 2). For comparison, the March unadjusted unemployment rate for Vermont was 2.6 percent, a decrease of three-tenths of one percentage point from the revised unadjusted February level and a decrease of two-tenths of one percentage point from a year ago.

## ***Analysis of Job Changes by Industry***

### **Seasonally-Adjusted** (Table 3)

The seasonally-adjusted data for March reported no change from the revised February data. There was a decrease of 200 jobs between the preliminary and the revised February estimates due to the inclusion of more data. The seasonally-adjusted over-the-month changes in March varied at the industry level. The industries with a notable increase were: Professional & Technical Services (+400 jobs or +2.3%) and Construction (+200 jobs or +1.2%). The industry with a notable decrease was Private Educational Services (-200 jobs or -1.6%).

### **Not-Seasonally-Adjusted** (Table 4)

The preliminary 'not-seasonally-adjusted' jobs estimates for March showed a decrease of 600 jobs when compared to the revised February numbers. As with the seasonally-adjusted data, this over-the-month change is from the revised February numbers which experienced no change from the preliminary estimates. The broader economic picture can be seen by focusing on the over-the-year changes in this data series. As detailed in the preliminary not-seasonally-adjusted March data, Total Private industries decreased by 1,900 jobs (-0.7%) over the year and Government (including public education) employment decreased by 300 jobs (-0.5%) in the past year.

\*\*\* BLS note on CES series drops in 2026: <https://www.bls.gov/sae/notices/2026/notice-of-publication-changes-with-the-release-of-March-2026-data.htm> \*\*\*

---

**The Unemployment and Jobs Report for April is scheduled to be released on Friday, May 22, 2026, at 10:00 a.m.**



**Table 1. Vermont Labor Force Estimates, seasonally adjusted**

	March 2026	February 2026	March 2025	Change From:	
				February 2026	March 2025
Civilian Labor Force	342,523	344,046	351,166	-1,523	-8,643
Employed	333,580	334,940	341,993	-1,360	-8,413
Unemployed	8,943	9,106	9,173	-163	-230
Unemployment Rate (%)	2.6	2.6	2.6	0.0	0.0

Vermont's labor force, employment and unemployment statistics are produced from a combination of a Statewide survey of households and statistical modeling. The data are produced by the Local Area Unemployment Statistics Program (LAUS), a cooperative program with the U.S. Department of Labor, Bureau of Labor Statistics ([www.bls.gov/lau](http://www.bls.gov/lau)) and the Vermont Department of Labor ([www.vtmi.info/laus.cfm](http://www.vtmi.info/laus.cfm)).

**Table 2. Vermont Counties, Labor Force Estimates**  
not seasonally adjusted

County	Civilian Labor Force	March 2026		Unemployment Rate <sup>1</sup> (%)		
		Employed	Unemployed	Mar-26	Feb-26	Mar-25
Vermont Total	339,428	330,574	8,854	2.6	2.9	2.8
Addison	20,743	20,257	486	2.3	2.8	2.6
Bennington	17,241	16,677	564	3.3	3.5	3.2
Caledonia	15,756	15,287	469	3.0	3.3	3.2
Chittenden	94,871	93,064	1,807	1.9	2.2	2.1
Essex	2,699	2,573	126	4.7	4.5	4.2
Franklin	25,814	25,056	758	2.9	3.2	3.0
Grand Isle	3,918	3,769	149	3.8	4.0	4.1
Lamoille	15,416	14,932	484	3.1	3.3	3.4
Orange	15,478	15,024	454	2.9	3.3	3.6
Orleans	13,408	12,647	761	5.7	5.9	5.7
Rutland	29,133	28,326	807	2.8	3.1	3.1
Washington	31,954	31,134	820	2.6	2.9	2.7
Windham	23,784	23,245	539	2.3	2.6	2.6
Windsor	29,213	28,582	631	2.2	2.4	2.2

<sup>1</sup>Rate is an estimate for number of unemployed divided by total labor force, expressed as a percent.

Source: Local Area Unemployment Statistics Program (LAUS) produced by the Vermont Department of Labor ([www.vtmi.info/laus.cfm](http://www.vtmi.info/laus.cfm)) in cooperation with the U.S. Bureau of Labor Statistics ([www.bls.gov/lau](http://www.bls.gov/lau)).



**Table 3. Vermont Nonfarm Payroll Employment, seasonally adjusted (thousands)**

NAICS Industry	Mar-26	Feb-26	Mar-25	Change From:		% Change From:	
	Prelim	Revised	Revised	Feb-26	Mar-25	Feb-26	Mar-25
<b>Statewide, Total Nonfarm</b>	<b>311.5</b>	<b>311.5</b>	<b>312.4</b>	<b>0.0</b>	<b>-0.9</b>	<b>0.0</b>	<b>-0.3</b>
<b>Total Private</b>	<b>255.6</b>	<b>255.5</b>	<b>255.9</b>	<b>0.1</b>	<b>-0.3</b>	<b>0.0</b>	<b>-0.1</b>
Mining, Logging and Construction	17.6	17.3	17.1	0.3	0.5	1.7	2.9
Mining & Logging	0.9	0.8	0.8	0.1	0.1	12.5	12.5
Construction	16.7	16.5	16.3	0.2	0.4	1.2	2.5
Manufacturing	27.4	27.5	27.6	-0.1	-0.2	-0.4	-0.7
Durable Goods	16.4	16.4	16.5	0.0	-0.1	0.0	-0.6
Non-Durable Goods	11.0	11.1	11.1	-0.1	-0.1	-0.9	-0.9
Trade, Transportation and Utilities	50.7	50.8	52.1	-0.1	-1.4	-0.2	-2.7
Wholesale Trade	8.3	8.3	8.5	0.0	-0.2	0.0	-2.4
Retail Trade	34.6	34.7	35.5	-0.1	-0.9	-0.3	-2.5
Trans., Warehousing & Utilities	7.8	7.8	8.1	0.0	-0.3	0.0	-3.7
Information	4.2	4.3	4.4	-0.1	-0.2	-2.3	-4.5
Financial Activities	11.6	11.5	11.5	0.1	0.1	0.9	0.9
Finance & Insurance	8.7	8.6	8.5	0.1	0.2	1.2	2.4
Real Estate, Rental & Leasing	2.9	2.9	3.0	0.0	-0.1	0.0	-3.3
Professional and Business Services	32.6	32.2	32.9	0.4	-0.3	1.2	-0.9
Professional & Technical Services	17.9	17.5	17.5	0.4	0.4	2.3	2.3
Education and Health Services	65.5	65.8	65.1	-0.3	0.4	-0.5	0.6
Private Educational Services	12.4	12.6	12.7	-0.2	-0.3	-1.6	-2.4
Health Care & Social Assistance	53.1	53.2	52.4	-0.1	0.7	-0.2	1.3
Leisure and Hospitality	36.2	36.2	35.1	0.0	1.1	0.0	3.1
Arts, Entertainment & Recreation	5.1	5.1	5.0	0.0	0.1	0.0	2.0
Accommodation & Food Services	31.1	31.1	30.1	0.0	1.0	0.0	3.3
Other Services	9.8	9.9	10.1	-0.1	-0.3	-1.0	-3.0
<b>Government</b>	<b>55.9</b>	<b>56.0</b>	<b>56.5</b>	<b>-0.1</b>	<b>-0.6</b>	<b>-0.2</b>	<b>-1.1</b>
Federal	6.6	6.6	7.0	0.0	-0.4	0.0	-5.7
State	19.3	19.3	18.9	0.0	0.4	0.0	2.1
Local	30.0	30.1	30.6	-0.1	-0.6	-0.3	-2.0
<b>Burlington-S. Burlington (MSA)</b>	<b>124.4</b>	<b>124.2</b>	<b>125.0</b>	<b>0.2</b>	<b>-0.6</b>	<b>0.2</b>	<b>-0.5</b>
<b>Total Nonfarm</b>	<b>124.4</b>	<b>124.2</b>	<b>125.0</b>	<b>0.2</b>	<b>-0.6</b>	<b>0.2</b>	<b>-0.5</b>

Source: Current Employment Statistics Program (CES) produced by the Economic and Labor Market Information Division, Vermont Department of Labor ([www.vtmi.info/ces.cfm](http://www.vtmi.info/ces.cfm)) in cooperation with the U.S. Bureau of Labor Statistics ([www.bls.gov/sae](http://www.bls.gov/sae)).

Estimates are preliminary and subject to revision. See Annual Summary for details.



**Table 4. Vermont Nonfarm Payroll Employment, not seasonally adjusted**

NAICS Industry	Mar-26	Feb-26	Mar-25	Change From:		% Change From:	
	Prelim	Revised	Revised	Feb-26	Mar-25	Feb-26	Mar-25
<b>TOTAL NONFARM</b>	<b>311,000</b>	<b>311,600</b>	<b>313,200</b>	<b>-600</b>	<b>-2,200</b>	<b>-0.2</b>	<b>-0.7</b>
<b>TOTAL PRIVATE</b>	<b>253,500</b>	<b>253,900</b>	<b>255,400</b>	<b>-400</b>	<b>-1,900</b>	<b>-0.2</b>	<b>-0.7</b>
<b>GOODS-PRODUCING</b>	<b>43,400</b>	<b>43,200</b>	<b>43,100</b>	<b>200</b>	<b>300</b>	<b>0.5</b>	<b>0.7</b>
MINING, LOGGING AND CONSTRUCTION	16,200	15,900	15,700	300	500	1.9	3.2
Mining & Logging	800	800	700	0	100	0.0	14.3
Construction	15,400	15,100	15,000	300	400	2.0	2.7
MANUFACTURING	27,200	27,300	27,400	-100	-200	-0.4	-0.7
Durable Goods	16,300	16,400	16,400	-100	-100	-0.6	-0.6
Non-Durable Goods	10,900	10,900	11,000	0	-100	0.0	-0.9
Food Mfg.	5,200	5,200	5,400	0	-200	0.0	-3.7
<b>SERVICE-PROVIDING</b>	<b>267,600</b>	<b>268,400</b>	<b>270,100</b>	<b>-800</b>	<b>-2,500</b>	<b>-0.3</b>	<b>-0.9</b>
TRADE, TRANSPORTATION AND UTILITIES	50,400	50,600	51,700	-200	-1,300	-0.4	-2.5
Wholesale Trade	8,300	8,200	8,500	100	-200	1.2	-2.4
Retail Trade	34,300	34,600	35,200	-300	-900	-0.9	-2.6
Food & Beverage Retailers	9,600	9,700	9,600	-100	0	-1.0	0.0
Transportation, Warehousing & Utilities	7,800	7,800	8,000	0	-200	0.0	-2.5
Transportation & Warehousing	6,600	6,600	6,700	0	-100	0.0	-1.5
Utilities	1,200	1,200	1,300	0	-100	0.0	-7.7
INFORMATION	4,200	4,300	4,400	-100	-200	-2.3	-4.5
FINANCIAL ACTIVITIES	11,400	11,400	11,400	0	0	0.0	0.0
Finance & Insurance	8,600	8,600	8,500	0	100	0.0	1.2
Real Estate, Rental & Leasing	2,800	2,800	2,900	0	-100	0.0	-3.4
PROFESSIONAL AND BUSINESS SERVICES	31,600	31,600	32,300	0	-700	0.0	-2.2
Professional & Technical Services	17,800	17,600	17,500	200	300	1.1	1.7
EDUCATION AND HEALTH SERVICES	66,800	66,400	66,800	400	0	0.6	0.0
Private Educational Services	13,800	13,500	14,400	300	-600	2.2	-4.2
Colleges and Universities	7,900	7,700	8,700	200	-800	2.6	-9.2
Health Care & Social Assistance	53,000	52,900	52,400	100	600	0.2	1.1
Ambulatory Health Care Services	17,300	17,500	17,200	-200	100	-1.1	0.6
Hospitals	14,600	14,600	14,800	0	-200	0.0	-1.4
Nursing & Residential Care Facilities	7,300	7,300	7,000	0	300	0.0	4.3
Social Assistance	13,800	13,500	13,400	300	400	2.2	3.0
LEISURE AND HOSPITALITY	36,000	36,600	35,800	-600	200	-1.6	0.6
Arts, Entertainment & Recreation	4,600	4,700	4,600	-100	0	-2.1	0.0
Accommodation & Food Services	31,400	31,900	31,200	-500	200	-1.6	0.6
Accommodation	12,700	13,000	12,700	-300	0	-2.3	0.0
Food Services & Drinking Places	18,700	18,900	18,500	-200	200	-1.1	1.1
OTHER SERVICES	9,700	9,800	9,900	-100	-200	-1.0	-2.0
<b>GOVERNMENT</b>	<b>57,500</b>	<b>57,700</b>	<b>57,800</b>	<b>-200</b>	<b>-300</b>	<b>-0.3</b>	<b>-0.5</b>
Federal Government	6,500	6,600	7,000	-100	-500	-1.5	-7.1
State Government	10,400	10,400	9,900	0	500	0.0	5.1
Other State Government	9,900	9,900	9,700	0	200	0.0	2.1
Local Government	22,500	22,600	23,100	-100	-600	-0.4	-2.6
Other Local Government	8,200	8,200	8,100	0	100	0.0	1.2

Source: Current Employment Statistics Program (CES) produced by the Economic and Labor Market Information Division, Vermont Department of Labor  
 Estimates are preliminary and subject to revision. See Annual Summary for details.

