

The Vermont Labor Market

Departments of Employment & Training / Labor & Industry

Vermont Department of

January
2003

Employment & Training

P.O. Box 488 • Montpelier, Vermont 05601-0488 • Tel.: (802) 828-4000 • FAX: (802) 828-4022

<http://www.det.state.vt.us>

Labor & Industry section
begins on page 10

Commissioner's Message

As Vermont begins the New Year with a new Governor, Jim Douglas, it also begins with a new Commissioner of Employment & Training. I am honored to have been asked by Governor Douglas to serve his administration in this capacity.

On the wall above the desk in my new office is a framed version of our MISSION Statement. It reads: In partnership with others, the Department of Employment & Training provides individuals with services, information and support to obtain and keep good jobs and provides employers with services, information and support to recruit and maintain a productive workforce.

This is an important mission. For me, SERVICE is the key word. I recognize the fine work that DET employees are already providing. It is my hope that together we will continue this work and continue to improve this excellent service for all our Vermont friends and families.

Grant Awarded for High Skills Training

Vermont is suffering from the same sort of workforce crisis as the rest of the country. Our knowledge-based economy is requiring more and more highly

(Continued on page 2)

The Edge

Waiting for a Burning Bush?

Only the very lucky among us have clear and undeniable occupational callings. For most, choosing an occupation is more like stumbling around in the dark. There are, however, a multitude of career development resources available to help both young people and job changers find meaningful work.

The Vermont Career Resource Network is dedicated to providing quality information for students, parents, teachers, administrators and counselors that improves career and educational decision-making. Some of the resources we offer are:

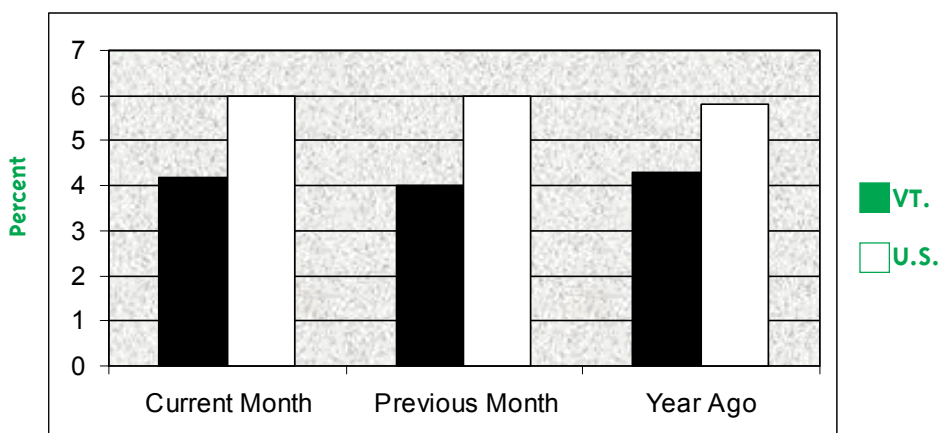
The Vermont Career Resource Network, located in the Department of Employment & Training offers a variety of career development resources for students, parents, practitioners and job seekers. These include:

Real Game Training and supplies: The Real Game Series is an experiential career development curriculum with versions for grades 3/

(Continued on page 2)

Unemployment Rates Vermont and U.S.

December (SA) 2002 Rates
VT 4.2% • U.S. 6.0%



Commissioner's Message –

(continued from front page)

skilled workers. Rapid changes in technology and a slow growing labor force have forced increased dependence on foreign workers. Recently, the Department of Labor awarded a second H-1B Technical Skills Training Grant to Vermont, which will fund the Vermont High Skills Training Project. H-1B is that portion of the immigration law that allows skilled workers into the US. This 2.9 million dollar grant is designed to decrease dependence on foreign workers by providing technical skills training in high tech occupations in the fields of information technology (IT) and health care.

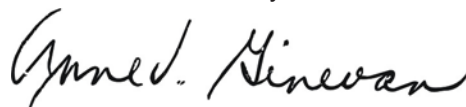
The Department of Employment & Training is the grant recipient, with fiscal and project management responsibilities. The grant, which is one of only two awarded nationally this year, came to DET partially as a result of the enormous success and national recognition our previous H-1B grant received. Cited as a national model, DET has provided technical assistance to other states, specifically in health care training. Additionally, DET has garnered exceptional employer support for the program, including a 150% funding match—which essentially transforms 2.9 million dollars into 4.5.

In the area of health care, training will be provided in pediatric intensive care nursing (for incumbent workers); psychiatric care nursing (for incumbent workers); radiologic technician training (for unemployed/dislocated workers); and pharmacy technician training. The pharmacy technician training program is a 2 year degree-granting program designed for unemployed and dislocated workers and will serve to alleviate the critical shortage of pharmacists currently available. A one-two year technical diploma will also be available for incumbent workers. Vermont's first H-1B grant had a substantial portion dedicated to advanced nurse training (critical care, operating room and psychiatric care). This grant allowed multiple partners to begin what has turned out to be a comprehensive effort in planning

healthcare training. It has also contributed to the examination of nurse retention issues and recruitment. Both grants have a strong focus on training for preceptors, individuals who oversee the clinical portions of trainee's time, which has also become a national model.

The Information Technology component will be coordinated by the Vermont Information Technology Center, located at Champlain College and IBM and will include training for both incumbent and unemployed workers. Areas of training include: multimedia and graphic design, computer networking, global networks and telecommunications, software development, website development and management, integrated circuit design tools programming, EBI/MBI technical training and engineering (computer, chemical and electrical).

Directly linked to the employer community and the state's workforce investment infrastructure, the Vermont High Skills Training Project will provide a significant and long lasting boost to Vermont's economy.



The Edge - *(continued from front page)*

4 through adult. VCRN provides training to facilitators as well as the curricula at no cost to participants or schools. Last year over 200 facilitators were trained to deliver Real Game programs in Vermont classrooms.

Career Development Resources training: VCRN provides training to students, practitioners, teachers, front line staff and agency personnel in career development and decision-making resources. On-line and print resources are reviewed, theories explored; and labor market information is explained. Trainings are offered regionally and on a cyclical schedule.

DIRECTIONS: This publication is issued every other year primarily for high school students and parents. Included in the publication are tools for self-assessment, Vermont specific projections information, occupational profiles, education and training options, and other career planning tools.

VCRN Website (www.vtmi.info/career.cfm) offering web-based resources for career guidance, including links to on-line assessment tools and educational exploration.

CHOICES, CX On-line and e-Guidance: These products are supported in part by VCRN funds to schools, career resource centers and regional offices. VCRN and VSAC have entered into a three-year contract with Bridges to provide e-Guidance to all Vermont high school students (see VSAC report).

Other products: VCRN provides the Occupational Outlook Handbook and occupational posters to Vermont middle and high schools. Occupational videos, produced by the ACRN video consortium are available on cds for schools and libraries, and are accessible over the web.

Collaboration with other agencies: VCRN works with VSAC, the Department of Education, the Department of Corrections, PATH, the Burlington Housing Authority and others to assess the career development needs and the challenge of drop-out prevention and truancy for Vermonters.

For more information about the Vermont Career Resource Network, visit our website or call 802-828-4394.



DET Notebook

Rutland DET Career Resource Center (CRC) is bustling with activity. Nestled on the 2nd floor of the Asa Bloomer building in downtown Rutland the one-stop CRC is truly an example of cooperation. There are many programs and state agencies in close proximity.

DET is fortunate to have in the Rutland CRC representatives from other agencies and programs. Representatives from Vermont Adult Learning (VAL), Vermont Associates, Vermont Association of Business, Industry and Rehabilitation (VABIR), Vermont Student Assistance

Visitors to DET feel comfortable in the knowledge that they have easy access to a multitude of services.

Corporation (VSAC) and Vermont Job Corps share office space at DET. They participate in weekly staff meetings and coordinate planned events like our recent legislative open house. Collaborative efforts with DET staff and our partners provide up to date information for the general public.

The advantage of having representatives share our office allows DET staff to become familiar with staff of these other programs. Client referral is far easier when we know the staff member personally. The general public is also helped because knowledge of programs by DET staff prevents them from going on a “wild goose chase” to find services.

Down the hall from DET is the Department of Social and Rehabilitative Services. The Department of Vocational Rehabilitation (Voc Rehab) is on the first floor and the Department

of Prevention Assistance Transition and Health Access (PATH) is on the 3rd, the office of Child Support is on the 4th floor. Other agencies like the VT Department of Health, State’s Attorney’s office, VOSHA also share building space.

Having other state partners close by helps DET logistically – scheduling meetings is much easier – but most importantly, we can provide clients of DET with the best possible service. Referrals, both from DET and to DET, are convenient, efficient and in many cases done in person, with a case manager providing individualized support. Throughout the entire process clients have an active say in their plan of action. This coordinated effort helps clients of all agencies become successful in their search for employment.

Other tenants in the building are the Social Security Office, branch of the Vermont State Employees Credit Union, bus service – local and long distance, a restaurant and small coffee shop. Visitors to DET feel comfortable in the knowledge that they have easy access to a multitude of services. They can be assured that we can provide them with excellent service and refer them to the proper agency if needed. Seamless, comfortable, caring individualism makes DET a true one stop Career Resource Center.

Economic Spotcheck

Local Unemployment Rates *(Not Seasonally Adjusted)*

Town/City*	Dec. '02	Nov. '02	Dec. '01
Barre City	8.6	8.3	7.4
Barre Town	3.2	3.4	2.8
Bennington Town	5.5	5.5	5.9
Brattleboro Town	3.0	3.2	2.9
Burlington City	3.0	3.3	3.0
Colchester Town	2.9	2.8	3.1
Essex Town	2.9	3.3	2.1
Hartford Town	1.9	1.6	1.8
Middlebury Town	2.5	2.4	2.5
Milton Town	4.2	4.1	3.5
Montpelier City	2.0	2.0	2.2
Rutland City	2.7	2.9	3.4
St. Albans City	3.1	3.1	3.7
St. Johnsbury Town	5.8	5.6	6.7
So. Burlington City	2.5	2.7	2.4
Springfield Town	6.0	6.8	4.9

*16 Largest Towns in Vermont

U.S. CONSUMER PRICE INDEX Base Period (1982 - 1984 = 100)

	Dec. 2002	Nov. 2002	Dec. 2001
All Items			
Index	180.9	181.3	176.7
Annual Percent Change	2.4	2.2	1.6

BRIEF EXPLANATION OF THE CPI - The Consumer Price Index (CPI) is a measure of the average change in prices over time of a fixed market basket of goods and services. It is based on prices of food, clothing, shelter, fuels, transportation fares, and other items that people buy for day to day living. The CPI shown above represents the U.S. city average for all urban consumers and is not seasonally adjusted.

There is no separate Consumer Price Index for Vermont or any area within the state.

Employment Trends

Total seasonally adjusted December employment increased by 200 from the previous month to 335,100 working Vermonters. This estimate includes all Vermont residents who worked, whether at wage and salary jobs, or as self-employed.

On a seasonally adjusted basis, the estimated number of nonfarm jobs held steady from the previous month at 298,300. Transportation and public utilities dropped slightly, losing 200 jobs and retail proved to be rather weak in December after a stronger showing the previous month. These losses were offset by strong gains in services. Private educational services did not experience quite the typical seasonal loss as in recent years, causing a gain of 200 jobs seasonally adjusted. Local government added 200 jobs due in part to brisk winter hiring in many locations, possibly due to early and heavy snowfall.

The more detailed estimates increased by 3,700 jobs in December, largely due to gains in industries affected by seasonal activities. Cold weather activities accounted for the increase in lodging as the skiing and riding season was well under way. Hotels and motels, which include resorts, added 2,850 jobs. Retail jumped by 800 jobs in December mostly due to additional hires during the holiday season.

These gains were somewhat offset by seasonal drops in construction as the weather turned colder and in education as schools prepared for midwinter breaks.

When compared to a year ago December, an additional 1,050 jobs were added. Manufacturing jobs fell by almost 2,300 from this time last year, with the largest loss coming out of durable goods. Services, on the other hand, added an additional 1,150 jobs with health services leading the way.

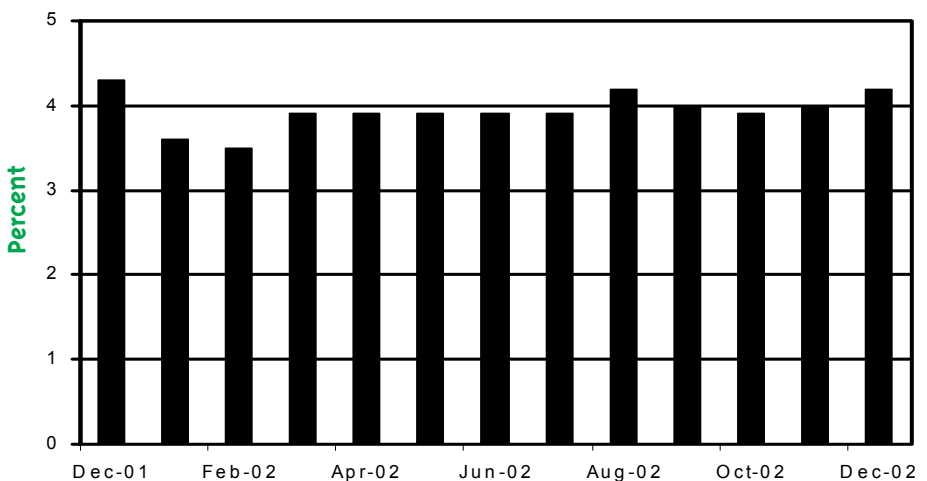
Unemployment Trends

Vermont's seasonally adjusted unemployment rate of 4.2 percent was up two tenths of a point from November with an estimated 14,600 Vermonters unemployed during the month.

The comparable national unemployment rate of 6.0 percent for December was unchanged from November.

The number of initial claims for Unemployment Insurance filed in December increased significantly from the previous month and was heavily concentrated in the manufacturing industry which accounted for 40 percent of all claims filed. Of these initial manufacturing claims, nonmetallic mineral products, which includes the granite industry accounted for the largest jump in initial claims. This is often the case during the period. Furniture and miscellaneous manufacturing also experienced large increases at year's end. Also, as is often the case during December, initial claims in construction increased significantly as weather conditions put an end to many jobs.

Vermont Seasonally Adjusted Unemployment Rate



Labor Force Estimates *(Seasonally Adjusted)*

Vermont	Dec. '02	Nov. '02	Dec. '01	Changes from:	
				Nov. '02	Dec. '01
TOTAL LABOR FORCE¹	349,700	348,900	336,500	800	13,200
TOTAL EMPLOYMENT	335,100	334,900	321,900	200	13,200
TOTAL UNEMPLOYMENT	14,600	14,000	14,600	600	0
RATE	4.2	4.0	4.3	0.2	-0.1

¹Includes proprietors, professionals, and unpaid family workers.
VCM Regression Methodology

Labor Market Areas *(Not Seasonally Adjusted)*

	Dec. 2002	Nov. 2002	Dec. 2001		Dec. 2002	Nov. 2002	Dec. 2001
BARRE-MONTPELIER				MORRISTOWN-STOWE			
Labor Force	40,800	40,400	38,850	Labor Force	19,550	18,600	18,850
Unemployment	1,750	1,750	1,550	Unemployment	1,050	1,000	1,000
Rate	4.3	4.3	4.0	Rate	5.4	5.4	5.2
Employment	39,050	38,650	37,300	Employment	18,500	17,600	17,850
BENNINGTON-MANCHESTER				NEWPORT			
Labor Force	22,100	22,500	21,500	Labor Force	14,150	14,250	13,850
Unemployment	900	950	1,050	Unemployment	1,050	950	1,200
Rate	4.1	4.3	5.0	Rate	7.5	6.7	8.6
Employment	21,150	21,500	20,450	Employment	13,100	13,300	12,700
BURLINGTON				RANDOLPH			
Labor Force	106,850	105,750	103,700	Labor Force	6,100	6,200	5,850
Unemployment	3,300	3,400	2,950	Unemployment	300	300	250
Rate	3.1	3.2	2.9	Rate	4.9	4.8	3.9
Employment	103,550	102,350	100,750	Employment	5,800	5,900	5,650
ENOSBURG				RUTLAND			
Labor Force	10,150	10,550	9,900	Labor Force	31,400	30,450	30,300
Unemployment	700	650	700	Unemployment	1,200	1,250	1,250
Rate	7.0	6.1	7.3	Rate	3.8	4.2	4.1
Employment	9,450	9,900	9,200	Employment	30,200	29,200	29,050
HARTFORD-LEBANON,VT-NH LMA (VT PORTION ONLY)				ST. JOHNSBURY			
Labor Force	29,050	29,100	28,100	Labor Force	15,500	15,700	15,000
Unemployment	600	550	550	Unemployment	800	800	850
Rate	2.1	1.9	1.9	Rate	5.0	5.0	5.5
Employment	28,450	28,550	27,550	Employment	14,700	14,950	14,200
KEENE-BRATTLEBORO,NH-VT LMA (ENTIRE AREA)				SPRINGFIELD			
Labor Force	na	56,800	59,250	Labor Force	10,650	10,000	10,350
Unemployment	na	1,750	1,200	Unemployment	500	550	500
Rate	na	3.1	2.0	Rate	4.6	5.5	5.0
Employment	na	55,050	58,050	Employment	10,150	9,450	9,800
MIDDLEBURY				STATEWIDE			
Labor Force	20,300	20,600	19,700	Labor Force	350,400	347,650	338,000
Unemployment	750	700	750	Unemployment	13,550	13,600	13,250
Rate	3.8	3.5	3.7	Rate	3.9	3.9	3.9
Employment	19,550	19,850	18,950	Employment	336,850	334,050	324,750

Monthly estimates are preliminary and subject to revision.
Detail may not add to totals due to rounding.

Vermont Seasonally Adjusted Nonfarm Employment in Thousands

INDUSTRY BY SIC	Prelim.	Revised	Revised	Changes From:	
	Dec. '02	Nov. '02	Dec. '01	Nov. '02	Dec. '01
Total - All Industries	298.3	298.3	297.4	0.0	0.9
Total - Private	247.3	247.5	247.1	-0.2	0.2
Construction	15.2	15.2	14.8	0.0	0.4
Mining	0.7	0.7	0.6	0.0	0.1
Manufacturing	43.9	43.9	46.1	0.0	-2.2
Durable Goods	29.9	29.9	31.8	0.0	-1.9
Lumber & Wood Products	2.9	2.9	3.0	0.0	-0.1
Stone, Clay & Glass	2.5	2.4	2.5	0.1	0.0
Nondurable Goods	14.0	14.0	14.3	0.0	-0.3
Food Products	4.3	4.4	4.3	-0.1	0.0
Apparel	0.6	0.6	0.7	0.0	-0.1
Transportation & Public Utilities	12.2	12.4	12.2	-0.2	0.0
Wholesale Trade	12.2	12.2	12.3	0.0	-0.1
Retail Trade	55.3	55.6	54.9	-0.3	0.4
Finance, Insurance & R.E.	13.2	13.2	12.9	0.0	0.3
Depository Institutions	4.6	4.7	4.4	-0.1	0.2
Services	94.6	94.3	93.3	0.3	1.3
Hotels, Motels, etc.	11.8	11.8	11.7	0.0	0.1
Health services	29.6	29.6	28.9	0.0	0.7
Educational Services	10.7	10.5	10.6	0.2	0.1
Total Government	51.0	50.8	50.3	0.2	0.7
Federal	5.7	5.8	5.5	-0.1	0.2
State	16.5	16.4	16.3	0.1	0.2
Local	28.8	28.6	28.5	0.2	0.3

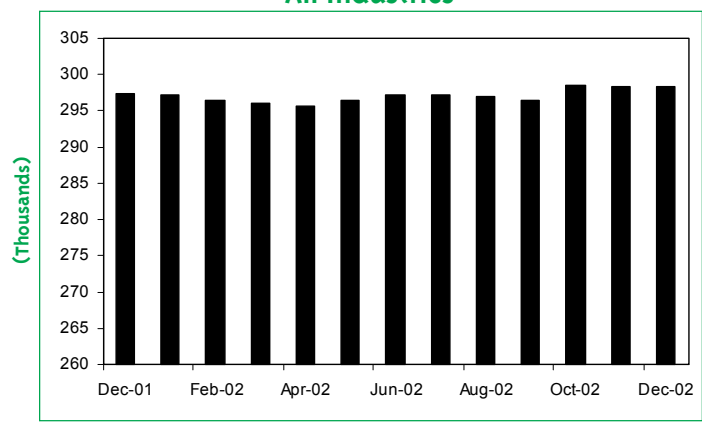
Vermont Department of Employment & Training in cooperation with the Bureau of Labor Statistics, U.S. Department of Labor.

Only a limited number of detailed industries are seasonally adjusted. Residual industries cannot be derived from published industries. More detail is unavailable.

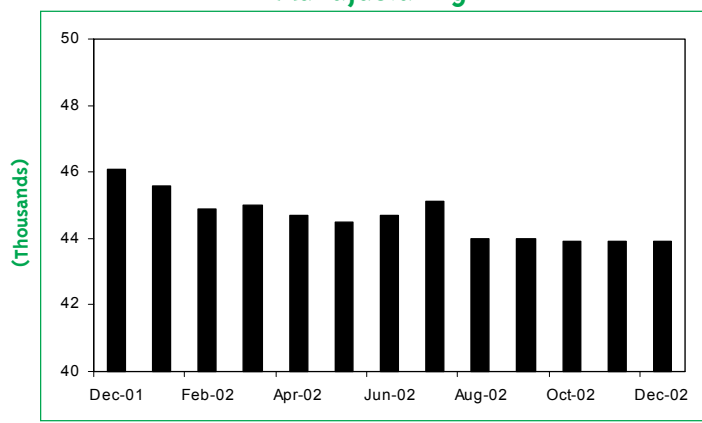
Seasonal Adjustments based on X-12 Arima method; Factors available upon request.

Vermont Seasonally Adjusted Job Levels

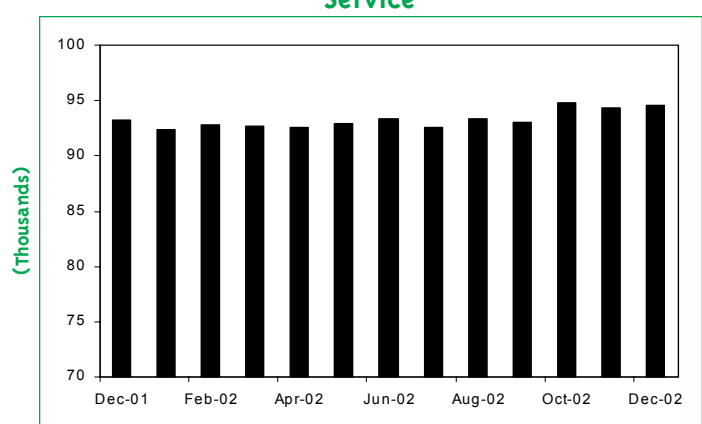
All Industries



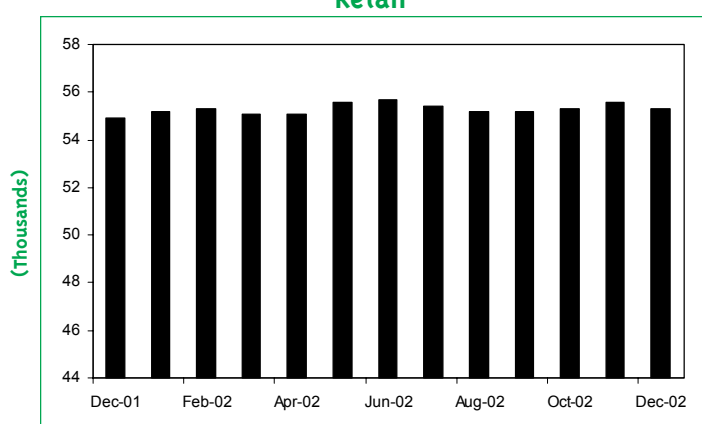
Manufacturing



Service



Retail



Average Hours and Earnings of Production and Nonsupervisory Workers

INDUSTRY BY SIC	Average Weekly Earnings(\$)			Average Weekly Hours			Average Hourly Earnings(\$)		
	Dec. '02 Prelim.	Nov. '02 Revised	Dec. '01 Revised	Dec. '02 Prelim.	Nov. '02 Revised	Dec. '01 Revised	Dec. '02 Prelim.	Nov. '02 Revised	Dec. '01 Revised
MANUFACTURING	577.90	577.90	570.78	39.8	39.8	39.5	14.52	14.52	14.45
Durable Goods	591.32	591.72	585.58	39.9	39.9	39.7	14.82	14.83	14.75
Lumber & Wood Products	462.89	460.13	465.37	41.0	40.9	41.7	11.29	11.25	11.16
Furniture & Fixtures	471.99	470.40	476.80	39.3	39.2	40.0	12.01	12.00	11.92
Stone, Clay & Glass	593.07	594.95	575.75	40.4	40.5	39.3	14.68	14.69	14.65
Prim. & Fab. Metal Products*	461.45	461.45	463.97	37.7	37.7	38.6	12.24	12.24	12.02
Transportation Equipment	705.20	707.33	700.85	41.0	41.1	40.7	17.20	17.21	17.22
Mach. & Electric Equipment	649.98	653.58	632.42	40.7	40.9	39.8	15.97	15.98	15.89
Non-Durable Goods	547.86	547.46	536.45	39.7	39.7	39.1	13.80	13.79	13.72
Food & Kindred Products	529.74	531.47	518.47	39.8	39.9	39.1	13.31	13.32	13.26
Apparel	396.80	396.80	379.78	40.0	40.0	38.4	9.92	9.92	9.89
Paper	630.00	630.00	611.91	40.0	40.0	39.0	15.75	15.75	15.69
Printing & Publishing	606.84	606.06	600.19	38.9	38.9	39.1	15.60	15.58	15.35
Rubber & Misc. Plastic Products.	486.42	488.84	470.84	40.4	40.5	39.5	12.04	12.07	11.92
TRANSPORT & PUB UTILS	565.85	567.69	553.77	37.9	38.1	37.8	14.93	14.90	14.65
WHOLESALE TRADE	583.44	583.44	584.63	37.4	37.4	37.5	15.60	15.60	15.59
RETAIL TRADE	298.07	297.78	291.24	29.6	29.6	29.3	10.07	10.06	9.94
FINANCE, INS., REAL EST.	530.20	530.56	522.65	35.8	35.8	35.7	14.81	14.82	14.64
SELECTED SERVICE INDUSTRIES									
Hotels & Resorts	323.13	323.44	290.70	31.1	31.1	28.5	10.39	10.40	10.20
Health Services	542.89	542.89	532.41	31.6	31.6	31.3	17.18	17.18	17.01
Hospitals	648.64	648.32	646.82	32.0	32.0	32.1	20.27	20.26	20.15
BURLINGTON AREA									
MANUFACTURING									
Non-Durable Goods	609.74	609.34	629.69	40.3	40.3	41.4	15.13	15.12	15.21
	617.78	617.39	660.21	39.5	39.5	39.7	15.64	15.63	16.63

*STC 33 & 34 Combined

Nonfarm Employment In Vermont *(Not Seasonally Adjusted)*

Compiled by the Department of Employment and Training in cooperation with the Bureau of Labor Statistics, U.S. Department of Labor

INDUSTRY BY SIC	Prelim.	Revised	Revised	Changes From:	
	Dec. '02	Nov. '02	Dec. '01	Nov. '02	Dec. '01
TOTAL - ALL INDUSTRIES	304,100	300,400	303,050	3,700	1,050
GOODS PRODUCING	59,950	60,600	61,650	-650	-1,700
MANUFACTURING	44,150	44,100	46,400	50	-2,250
Durable Goods	29,950	29,850	31,950	100	-2,000
Lumber & Wood Products	2,850	2,850	2,950	0	-100
Furniture & Fixtures	2,500	2,500	2,550	0	-50
Stone, Clay & Glass	2,450	2,500	2,500	-50	-50
Primary & Fab. Metal Prod.*	3,000	3,000	3,200	0	-200
Mach. & Electric Equipment**	12,950	12,750	14,450	200	-1,500
Transportation Equipment	2,750	2,750	2,850	0	-100
Nondurable Goods	14,200	14,250	14,450	-50	-250
Food Products	4,550	4,550	4,550	0	0
Apparel	600	650	650	-50	-50
Paper	1,850	1,850	1,850	0	0
Printing & Publishing	4,100	4,100	4,300	0	-200
Rubber & Misc. Plastics	1,600	1,600	1,600	0	0
CONSTRUCTION	15,100	15,800	14,650	-700	450
MINING/QUARRYING	700	700	600	0	100
SERVICE PRODUCING	244,150	239,800	241,400	4,350	2,750
TRANSP. & PUB. UTILITIES	12,350	12,400	12,200	-50	150
Transportation	7,750	7,800	7,750	-50	0
Public Utilities & Comm.	4,600	4,600	4,450	0	150
TRADE	69,000	68,200	68,550	800	450
Wholesale	12,350	12,350	12,350	0	0
Retail	56,650	55,850	56,200	800	450
FIN., INS., & REAL ESTATE	13,200	13,050	12,850	150	350
Depository Institutions	4,650	4,600	4,400	50	250
Insurance Carriers	2,550	2,550	2,600	0	-50
Real Estate	2,350	2,300	2,300	50	50
SERVICES	95,600	92,350	94,450	3,250	1,150
Hotels, Motels, etc.	12,500	9,650	12,450	2,850	50
Health Services	29,750	29,600	29,050	150	700
Hospitals	10,250	10,200	9,950	50	300
Business Services	10,250	10,250	10,200	0	50
Education Services	11,250	11,450	11,200	-200	50
TOTAL GOVERNMENT	54,000	53,800	53,350	200	650
Federal	5,700	5,650	5,550	50	150
State, Total	17,650	17,750	17,400	-100	250
State Colleges, UVM	8,700	8,750	8,500	-50	200
Local, Total	30,650	30,400	30,400	250	250
Schools	23,750	23,700	23,650	50	100

* SIC 33 & 34 Combined. ** SIC 35 & 36 Combined.

Nonfarm Employment By Area *(Not Seasonally Adjusted)*

Note: Monthly estimates are preliminary and subject to revision. See Annual Employment & Earnings for details. Benchmark 3/2001.

Burlington

INDUSTRY BY SIC	Preliminary	Revised	Revised	Changes From:	
	Dec. '02	Nov. '02	Dec. '01	Nov. '02	Dec. '01
TOTAL	109,550	108,600	109,800	950	-250
GOODS PRODUCING	22,800	22,750	23,950	50	-1,150
Manufacturing	17,500	17,350	18,650	150	-1,150
Durable Goods	13,000	12,850	14,150	150	-1,150
Nondurable Goods	4,500	4,500	4,500	0	0
Construction & Mining	5,300	5,400	5,300	-100	0
SERVICE PRODUCING	86,750	85,850	85,850	900	900
Transp. & Public Utilities	4,850	4,800	4,750	50	100
Trade: Whole. & Retail	24,150	23,800	24,150	350	0
Fin., Ins. & Real Estate	5,600	5,500	5,350	100	250
Services	33,300	33,100	33,000	200	300
Government	18,850	18,650	18,600	200	250

Barre-Montpelier

TOTAL	34,900	34,650	34,400	250	500
GOODS PRODUCING	5,350	5,450	5,400	-100	-50
Manufacturing	3,850	3,800	3,900	50	-50
Durable Goods	2,000	2,000	2,050	0	-50
Nondurable Goods	1,850	1,800	1,850	50	0
Construction & Mining	1,500	1,650	1,500	-150	0
SERVICE PRODUCING	29,550	29,200	29,000	350	550
Transp. & Public Utilities	1,200	1,250	1,200	-50	0
Trade: Whole. & Retail	7,200	7,050	7,100	150	100
Fin., Ins. & Real Estate	2,800	2,800	2,750	0	50
Services	9,500	9,250	9,400	250	100
Government	8,850	8,850	8,550	0	300

Rutland

TOTAL	30,000	28,900	29,700	1,100	300
GOODS PRODUCING	5,800	5,850	5,950	-50	-150
Manufacturing	4,250	4,200	4,350	50	-100
Durable Goods	3,600	3,550	3,700	50	-100
Nondurable Goods	650	650	650	0	0
Construction & Mining	1,550	1,650	1,600	-100	-50
SERVICE PRODUCING	24,200	23,050	23,750	1,150	450
Transp. & Public Utilities	1,300	1,300	1,200	0	100
Trade: Whole. & Retail	7,400	7,250	7,350	150	50
Fin., Ins. & Real Estate	900	900	850	0	50
Services	9,700	8,700	9,750	1,000	-50
Government	4,900	4,900	4,600	0	300

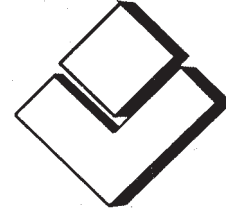
DET Program Summary

	December 2002	November 2002	December 2001	Percent Change From Last Month Last Year	
UI Trust Fund	\$281,388,449	\$293,243,881	\$300,397,204	-4.0%	-6.3%
UI Reg. Benefit Payments *	\$11,298,535	\$6,711,393	\$8,462,990	68.3%	33.5%
UI Initial Claims	8,409	5,568	9,173	51.0%	-8.3%
UI Weeks Claimed	51,043	31,410	40,938	62.5%	24.7%

*Includes benefit payments for reimbursable employers.

Vermont Department of

Labor & Industry



Drawer 20 • Montpelier, Vermont 05620-3401 • Tel.: (802) 828-2288 • FAX: (802) 828-2195

Commissioner's Message

Vermont is indeed fortunate to have so many talented people dedicated to fire safety and fire prevention. The Department of Labor and Industry has four regional offices – in Rutland, Springfield, Williston and Barre – from which our fire prevention officers provide assistance to Vermonters on a wide range of building safety issues. Here in Montpelier, Chief Fire Prevention Officer Robert Howe works with stakeholders on complicated and high profile projects.

One of my goals as Commissioner is to place a renewed emphasis upon fire safety education. We need to teach all Vermonters, young and old, about the ways in which they can minimize the risk of a fire and we also must educate them on what to do when a fire occurs. I plan on instituting a public service campaign to help raise awareness of these issues, and in the spring and summer I plan on taking the department's "Fire Safety House" on the road to teach Vermonters about fire safety.

We should be proud of the efforts that we have made over the years to improve fire safety in the Green Mountain State. However, much remains to be done. Believe it or not, the leading cause of residential fire deaths in this state is smoking. Through education and outreach efforts, we may be able to prevent some of those deaths from occurring.

I look forward to working with the fire safety professionals within the Department of Labor and Industry and firefighting personnel throughout the state to come up with creative ways in which we can educate our fellow Vermonters about fire safety. I urge anyone with an interest in this issue to contact me at 828-5098 or by e-mail, michael.bertrand@labind.state.vt.us.

The Vermont Access Rules & the Americans with Disabilities Act Accessibility Guidelines (ADAAG)

The Americans with Disabilities Act (ADA) has had a profound effect improving accessibility to public buildings in Vermont for people with disabilities over the last decade. Technical standards have not changed much, but the awareness of designers, builders, and owners of accessibility concepts and accessibility legal requirements for buildings, has.

The U.S. Access Board established the ADAAG technical standards for new construction, additions and alteration; the U.S. Department of Justice adopted these standards and enforces the ADA. In Vermont, the Vermont Access Board and the Department of Labor & Industry only enforce the ADAAG standards for buildings constructed and/or altered. The Vermont Human Rights Commission or the Vermont Attorney General's Office may

(Continued on page 11)

Labor & Industry

(continued from page 10)

enforce access issues involving employment, government services, telecommunications and public accommodations in existing buildings. The U.S. Department of Justice can also enforce the ADA in Vermont.

There have been standards for accessibility in new construction in Vermont since 1967, which has eased the transition to acceptance of the ADA in Vermont. The current laws and rules in Vermont regarding accessibility are the same as the federal laws in most areas, but they also cover private clubs and religious buildings.

The Vermont laws governing vertical access (elevators) that were in place prior to the ADA have remained, but it is possible to seek a variance or exemption from these state specific requirements. Vermont also has specific statutory provisions and rules for housing construction.

The ADAAG does not establish access standards for multi-family housing, but there are specific federal HUD standards that apply.

The Vermont Access Board and the Department of Labor & Industry are now taking a two pronged approach to improve the understanding and predictability of the accessibility laws and rules, and the variance and exemption process

First, the Vermont Access Board has determined that a mezzanine in a one-story building, and a non-occupiable storage space used only on an

infrequent basis, are exempt from any vertical access requirement. The board also delegated to Fire Prevention Division staff the ability to review and exempt from the vertical access requirement two story buildings where the second floor space is not greater than 1,000 square feet in area, and also where disproportionate costs exceed 50% of the cost of alterations to the primary function area. These decisions not only improve the understanding of the rules but also speed up the permit process because Fire Prevention Division staff can make the decisions at the time of permit review without waiting for the Vermont Access Board to meet and review the request.

The board is committed to reviewing other proposals and rule changes that will help designers, builders and owners work with the rules to develop successful construction solutions for accessibility for people with disabilities.

The board will continue to evaluate questions regarding equivalent facilitation, that is using alternative designs and technologies; site impracticality, where the unique characteristics of the terrain prevents accessibility; technically infeasible, where existing physical or structural load bearing conditions prevent compliance with the standard; and also determine requests for variances and exemptions. A variance or exemption may be granted where the standard is not required by federal law and

meeting the standard would be prohibitively costly, would threaten the historic significance of the building or would provide access by a platform lift instead of an elevator. The board may, also grant abatement, or an extension of time, to meet accessibility standards.

The second initiative has been undertaken by the department to provide more training on the accessibility rules for the designers, builders and owners who work with the rules, as well as for the inspection staff who enforce the rules. Recent training and educational programs have been designed for architects and real estate professionals. The training includes what is acceptable for dimensional tolerances. While details are important in ensuring the use and access to a building by people with disabilities, it is recognized that some dimensions may be different than the standard due to the materials used in construction, the placement and finishing of materials, the condition of construction tools, skilled labor, weather conditions, and the life cycle of materials.

For additional technical assistance and educational information, contact Robert M. Howe, Assistant State Fire Marshal, Chief Fire Prevention Officer 1-800-640-2106.



P.O. Box 488 • Montpelier, VT 05601-0488
Official Business • Penalty for Private Use \$300

Vermont Safety & Health Conference

“Health & Safety: The Hidden Cost of Doing Business”

February 20, 2003

9:00 a.m. - 3:40 p.m., Clarion Hotel, 1117 Williston Rd., Burlington

Topics include: The True Cost of Injuries, the New VT Drug Testing Law, Ergonomic Risk Assessment, What to Look for in a Workers' Comp Carrier, Integrating Quality and Safety Programs, Developing an Electrical Safety Program, Post 9/11 Security Issues, Value Added Safety, and the Cost of Business Traffic Crashes.

Cost: \$50 (or \$35 if register by 2/10/03) lunch included.
Please register on-line @ www.vtsbdc.org (use training tab).

Sponsored by:

VT Chamber of Commerce, VT Safety & Health Council and the Partnership in Safety.

The Department of Employment & Training is an equal opportunity employer/program. Auxiliary aids and services are available upon request to individuals with disabilities. TDD: (802) 828-4203.

