

VERMONT ECONOMIC AND TRAVEL INDICATORS

SEPTEMBER 2014

visit our web site at: www.vtLmi.info

Labor Market & Business Activity	Current	Last	Year	% Change	
	Month	Month	Ago	Last Month	Last Year
Employment (NonFarm,S.A.,Thousand) *	306.1	306.8	305.3	-0.2%	0.3%
Avg. Weekly Hours (Manufacturing) *	38.6	38.6	38.3	0.0%	0.8%
Unemployment Rate (S. A. %)	4.4	4.1	4.5	7.3%	-2.2%
U.I. Initial Claims	1,797	1,779	2,078	1.0%	-13.5%
U.I. Exhaustees	258	271	317	-4.8%	-18.6%
Passenger Car Registrations	32,096	35,282	30,944	-9.0%	3.7%
Total Current Car Registrations	421,268	421,884	420,656	-0.1%	0.1%
Total Current Pick-Up Truck Reg.	105,254	105,439	106,885	-0.2%	-1.5%
Bank Deposits - Survey (\$Million)	6,729	6,788	6,677	-0.9%	0.8%
Business Formations **	619	626	NA	-1.1%	NA
Airport Enplanements (B.I.A.)	52,737	58,601	54,487	-10.0%	-3.2%

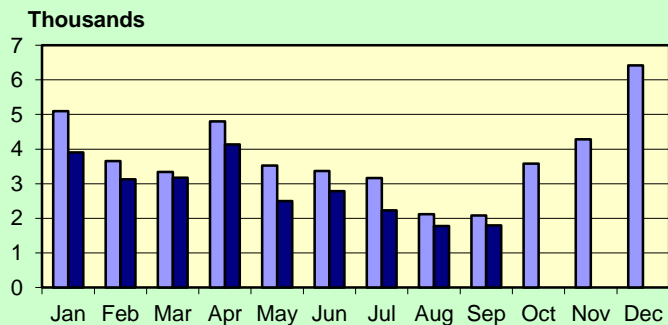
* Current Month numbers are preliminary, Last Month & Year Ago are revised.

** Not comparable to previous issues, <https://www.vtsosonline.com/>

State Tax Revenues (\$Million)	Current	Fiscal Year	FYTD	% Change	
	Month	To Date	Last Year	Last Year	Last FYTD
General Fund	137.7	327.1	316.3	7.1%	3.4%
Personal Income	71.6	163.9	157.2	8.1%	4.3%
Sales & Use	18.8	60.0	57.5	3.8%	4.4%
Corporate Income	21.6	26.2	20.7	5.3%	5.3%
Rooms & Meals	15.0	41.7	39.6	6.8%	5.1%
Property Transfer	0.9	3.1	3.1	-5.1%	1.0%
Other *	7.7	21.8	20.9	10.2%	4.4%
Transportation Fund	24.2	66.2	64.0	5.7%	3.3%
Gasoline	6.8	20.1	21.1	-14.4%	-4.7%
Purchase and Use	6.2	16.3	15.1	17.7%	8.1%
Motor Vehicle Fees	6.7	19.8	19.4	0.4%	1.7%
Other	1.9	4.9	4.6	23.4%	6.3%
Education Fund, non-property tax component	15.3	44.8	43.3	4.5%	3.4%

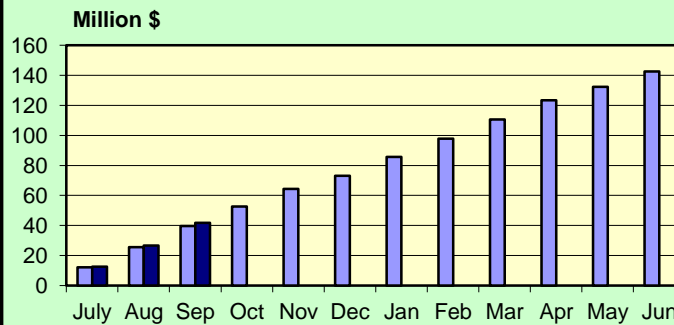
* Includes: Insurance, Inheritance & Estate, Bank Franchise, Telephone, Liquor, Beverage, Fees and Other Taxes.

**UI Initial Claims
2013-2014**



Source: Vt. Department of Labor

**Rooms & Meals Tax Revenues to Date
FY2013-FY2014**



Source: Vt. Dept. of Finance & Management

SEPTEMBER 2014

Construction

Residential Building Permits	Current	Year	Year	Year To Date	
	Month	To Date	Ago	Last Year	% Change
Housing Units	100	984	165	1,089	-9.6%
Estimated Value (\$thousand)	21,358	182,844	29,706	184,811	-1.1%

Employment	Current	Last	Year	% Change	
	Month	Month	Ago	Last Month	Last Year
Construction Emp. (S.A.,thousand)	14.5	14.7	14.0	-1.4%	3.6%

Travel & Tourism	Current	Last	Year	% Change	
	Month	Month	Ago	Last Month	Last Year
Leisure & Hospitality Emp. (S.A.,thousand)	34.4	33.4	34.2	3.0%	0.6%
Selected Traffic Volume *	69,078	76,634	70,052	-9.9%	-1.4%

>Welcome Center Counts, Total	80,446	122,063	79,414	-34.1%	1.3%
Guilford	56,234	88,007	56,087	-36.1%	0.3%
Fair Haven	15,471	19,621	15,904	-21.2%	-2.7%
Georgia (Southbound)	8,741	14,435	7,423	-39.4%	17.8%

* Missing one site, numbers have been adjusted.

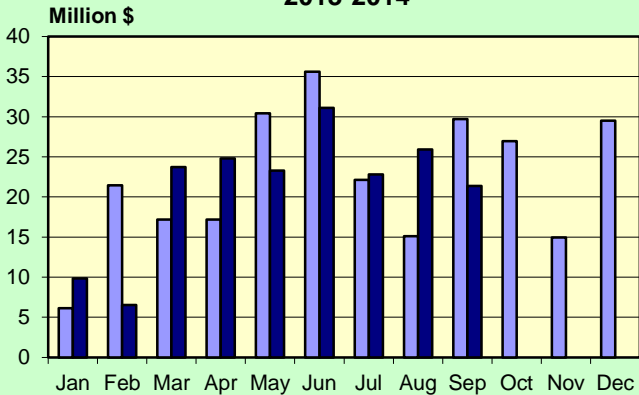
Seasonal Indicators	Current	Season	Year	Season To Date	
	Month	To Date	Ago	Year Ago	% Change
Attendance Surveys					
State Parks (Day Use)	44,383	538,075	42,177	488,756	10.1%
State Campgrounds (Campers)	30,678	392,785	35,135	368,159	6.7%
Travel Attr. & Museums (Summer) *	43,677	263,150	55,268	296,741	-11.3%
Travel Attr. & Museums (Year Round) **	51,278	471,772	49,375	460,555	2.4%

* Based on VDOL survey of 8 Attractions operating during months of May - Oct. ** Based on VDOL survey of 7 attractions.

Travel Attraction data is collected as part of a managed sample; above information may not be directly comparable to previous releases..

SEPTEMBER 2014

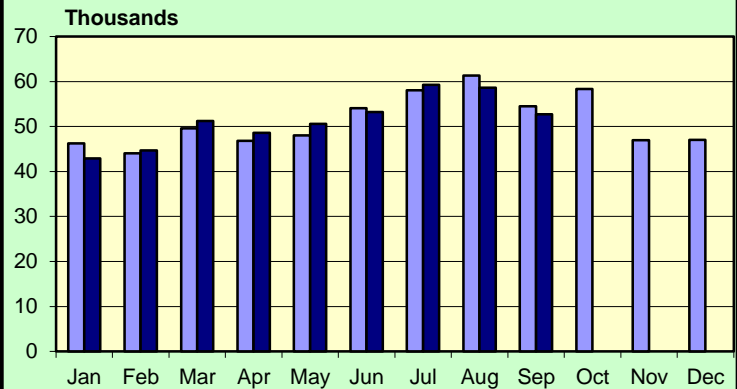
**Vermont Residential Building Permits
Estimated Value (\$Million)
2013-2014**



Source: U.S. Census Bureau

■ 2013 ■ 2014

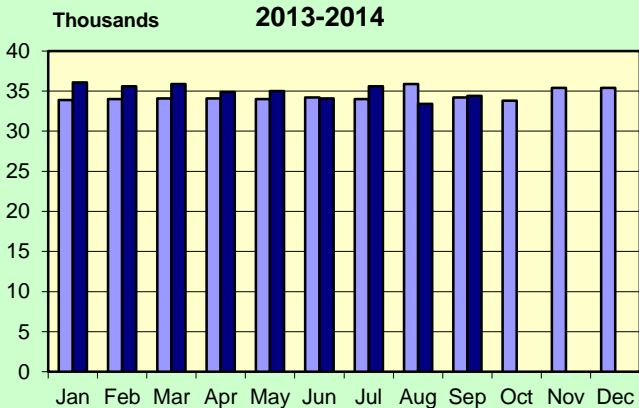
**Enplanements 2013-2014
Burlington International Airport**



Source: BIA Administration

■ 2013 ■ 2014

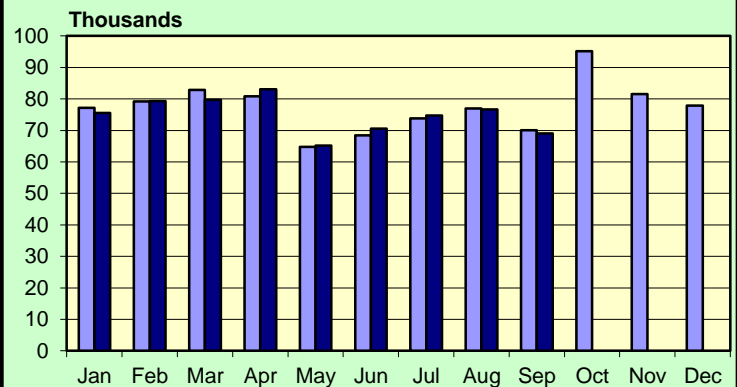
**Leisure & Hospitality Employment
Seasonally Adjusted Estimates
2013-2014**



Source: Vt. Department of Labor, LMI Section.

■ 2013 ■ 2014

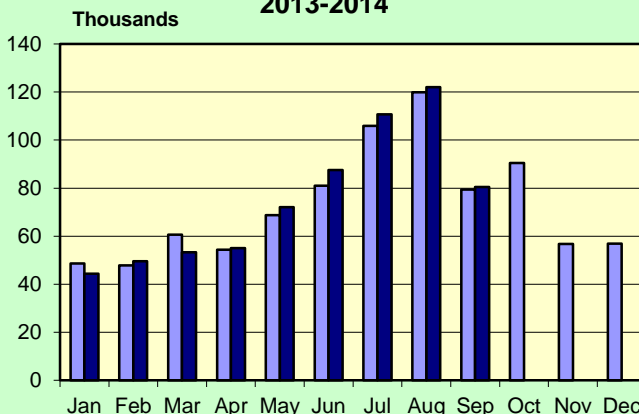
**Traffic Volumes at Selected Locations
2013-2014**



Source: Vt. Agency of Transportation
See note in table.

■ 2013 ■ 2014

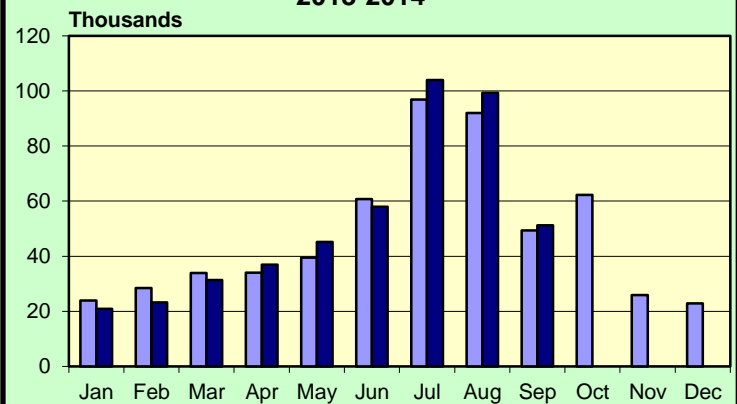
**Welcome Center Counts
2013-2014**



Source: Vermont Information Center Division, BGS.

■ 2013 ■ 2014

**Travel Attraction Attendance (Yr Rd)
2013-2014**



Based on VDOL survey of 7 Attractions.

■ 2013 ■ 2014

SEPTEMBER 2014

Rooms & Meals Business Receipts **	CY 2nd Qtr	CY 1st Qtr	CY 2nd Qtr	% Change	
	(Apr-Jun) 2014 *	(Jan-Mar) 2013	(Apr-Jun) 2013	Last Quarter	Last Year
Meals (\$Thousand)	223,667	228,796	213,916	-2.2%	4.6%
Room (\$Thousand)	78,965	132,109	70,939	-40.2%	11.3%
Alcohol (\$Thousand)	39,208	49,004	36,703	-20.0%	6.8%

* Numbers are preliminary.

** All Business Receipts are for the Calendar Year (CY).

Vermont DEPARTMENT OF LABOR
ECONOMIC AND TRAVEL INDICATORS

Vermont Economic and Travel Indicators is published by the Economic & Labor Market Information Section of the VT Department of Labor. This publication can be found on our website: www.vtLmi.info

For more information or email address changes: Phone: (802)828-4202
or email: Labor-Lmi@state.vt.us

Data sources for this publication are: U.S.Census Bureau; Burlington Airport Administration; Vt. Departments of Labor, Finance & Management, Forests, Parks & Recreation, Taxes, Motor Vehicles, Vermont Information Center Division, Buildings & General Services, Vt. Agency of Transportation; Secretary of State's Office; Vt. Division for Historic Preservation; selected banks and travel attractions.

Equal opportunity is the law. The State of Vermont is an Equal Opportunity / Affirmative Action Employer. Applications from women, individuals with disabilities, and people from diverse cultural backgrounds are encouraged. Auxiliary aids and services are available upon request to individuals with disabilities. 711 (TTY/Relay Service) or (802) 828-4203 TDD (Vermont Department of Labor).