

VERMONT ECONOMIC AND TRAVEL INDICATORS

JUNE 2013

visit our web site at: www.vtLmi.info

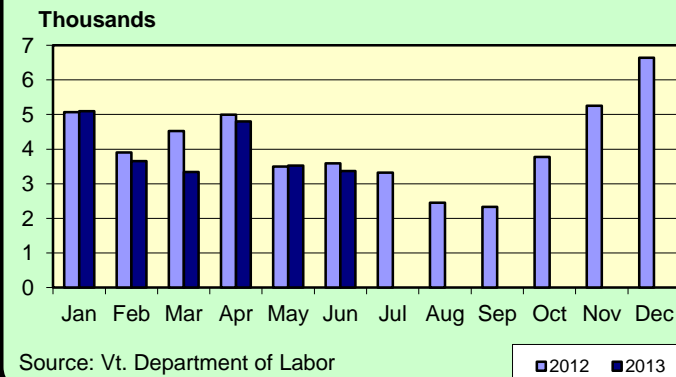
Labor Market & Business Activity	Current	Last	Year	% Change	
	Month	Month	Ago	Last Month	Last Year
Employment (NonFarm,S.A.,Thousand) *	306.3	304.9	302.9	0.5%	1.1%
Avg. Weekly Hours (Manufacturing) *	38.8	38.3	37.9	1.3%	2.4%
Unemployment Rate (S. A. %)	4.4	4.1	5.1	7.3%	-13.7%
U.I. Initial Claims	3,370	3,528	3,587	-4.5%	-6.0%
U.I. Exhaustees	397	403	441	-1.5%	-10.0%
DOL Jobs Filled (last 12 months) ***	NA	NA	577	NA	NA
Passenger Car Registrations	35,406	38,063	36,413	-7.0%	-2.8%
Total Current Car Registrations	419,914	418,050	417,073	0.4%	0.7%
Total Current Pick-Up Truck Reg.	107,223	107,102	109,443	0.1%	-2.0%
Bank Deposits - Survey (\$Million)	6,414	6,481	6,409	-1.0%	0.1%
New Business Incorporations **	34	42	37	-19.0%	-8.1%
Airport Enplanements (B.I.A.)	54,039	48,058	53,491	12.4%	1.0%

* Numbers are preliminary. ** Includes "closed" corporations. *** NA, problem with the program.

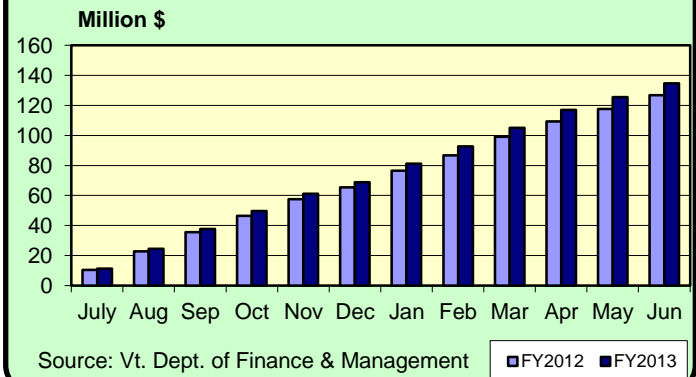
State Tax Revenues (\$Million)	Current	Fiscal Year	FYTD	% Change	
	Month	To Date	Last Year	Last Year	Last FYTD
General Fund	112.4	1288.6	1197.0	1.5%	7.7%
Personal Income	59.8	660.7	597.0	0.6%	10.7%
Sales & Use	19.2	231.2	227.9	5.7%	1.4%
Corporate Income	13.0	95.0	85.9	-9.0%	10.5%
Rooms & Meals	9.2	134.8	126.9	-1.0%	6.2%
Property Transfer	0.9	9.2	7.9	4.4%	16.5%
Other *	8.8	87.5	81.8	7.2%	7.0%
Transportation Fund	25.6	228.2	221.7	10.8%	2.9%
Gasoline	6.5	59.9	59.3	28.7%	1.1%
Purchase and Use	6.7	55.7	54.6	6.7%	2.0%
Motor Vehicle Fees	8.2	77.9	73.5	0.4%	5.9%
Other	2.0	19.1	18.3	19.6%	4.2%
Education Fund, non-property tax component	16.9	166.5	163.6	25.0%	1.7%

* Includes: Insurance, Inheritance & Estate, Bank Franchise, Telephone, Liquor, Beverage, Fees and Other Taxes.

UI Initial Claims 2012-2013



Rooms & Meals Tax Revenues to Date FY2012-FY2013



JUNE 13

Construction

Residential Building Permits	Current	Year	Year	Year To Date	
	Month	To Date	Ago	Last Year	% Change
Housing Units	212	728	148	657	10.8%
Estimated Value (\$thousand)	35,603	122,908	24,250	113,618	8.2%

Employment	Current	Last	Year	% Change	
	Month	Month	Ago	Last Month	Last Year
Construction Emp. (S.A.,thousand)	13.5	13.9	14.1	-2.9%	-4.3%

Travel & Tourism	Current	Last	Year	% Change	
	Month	Month	Ago	Last Month	Last Year
Leisure & Hospitality Emp. (S.A.,thousand)	34.4	34.1	33.6	0.9%	2.4%
Selected Traffic Volume *	91,442	86,249	92,620	6.0%	-1.3%

Welcome Center Counts, Total	81,013	68,717	89,145	17.9%	-9.1%
Guilford	57,272	48,128	59,996	19.0%	-4.5%
Fair Haven	15,343	11,736	18,386	30.7%	-16.6%
Georgia (Southbound)	8,398	8,853	10,763	-5.1%	-22.0%

Seasonal Indicators	Current	Season	Year	Season To Date	
	Month	To Date	Ago	Year Ago	% Change

Attendance Surveys

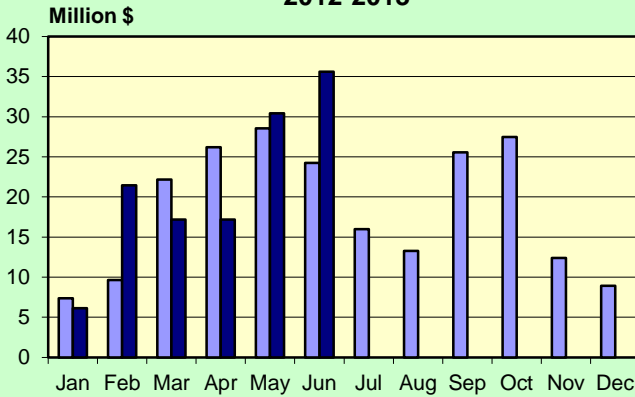
State Parks (Day Use)	88,905	111,238	121,323	143,888	-22.7%
State Campgrounds (Campers)	64,091	74,977	67,357	94,064	-20.3%
Travel Attr. & Museums (Summer) *	41,312	61,345	51,694	73,862	-16.9%
Travel Attr. & Museums (Year Round) **	60,355	220,322	59,178	216,280	1.9%

* Based on VDOL survey of 8 Attractions. ** Based on VDOL survey of 7 attractions.

Travel Attraction data is collected as part of a managed sample; above information may not be directly comparable to previous releases..

JUNE 2013

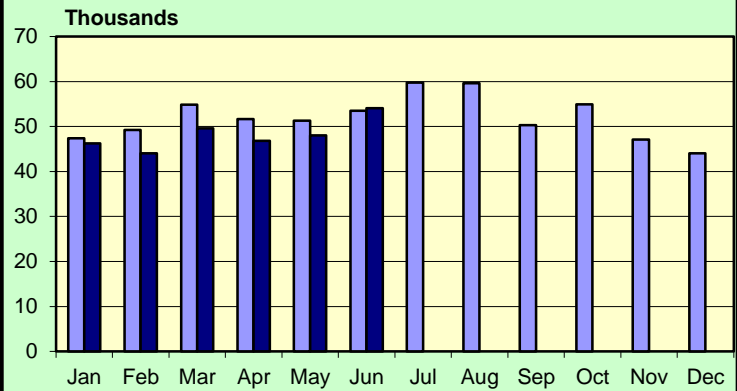
**Vermont Residential Building Permits
Estimated Value (\$Million)
2012-2013**



Source: U.S. Census Bureau

■ 2012 ■ 2013

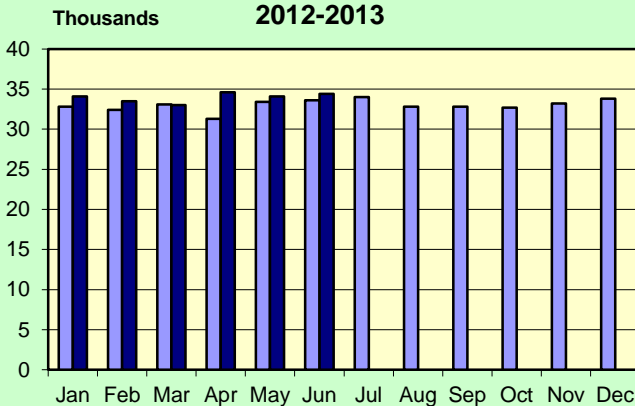
**Enplanements 2012-2013
Burlington International Airport**



Source: BIA Administration

■ 2012 ■ 2013

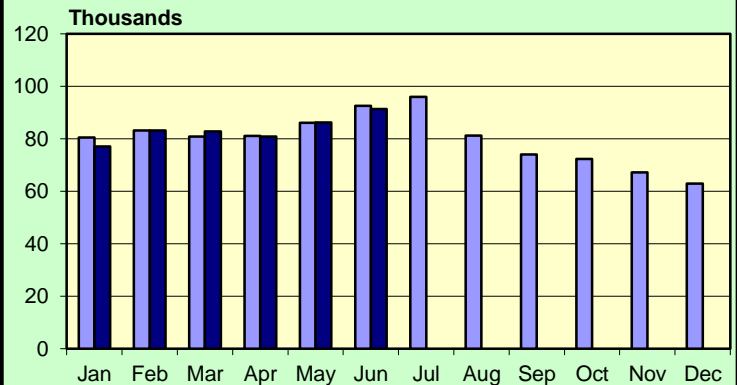
**Leisure & Hospitality Employment
Seasonally Adjusted Estimates
2012-2013**



Source: Vt. Department of Labor, LMI Section.

■ 2012 ■ 2013

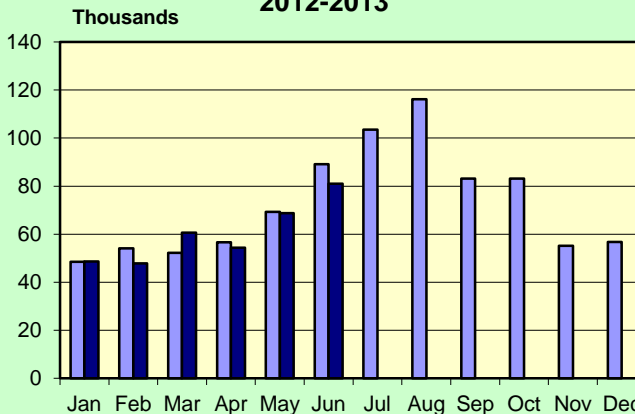
**Traffic Volumes at Selected Locations
2012-2013**



Source: Vt. Agency of Transportation

■ 2012 ■ 2013

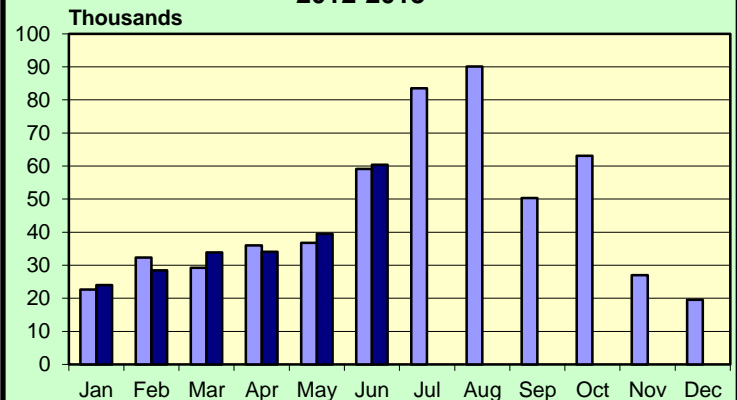
**Welcome Center Counts
2012-2013**



Source: Vermont Information Center Division, BGS.

■ 2012 ■ 2013

**Travel Attraction Attendance (Yr Rd)
2012-2013**



Based on VDOL survey of 7 Attractions.

■ 2012 ■ 2013

JUNE 2013

Rooms & Meals Business Receipts **	CY 1st Qtr	CY 4th Qtr	CY 1st Qtr	% Change	
	(Jan-Mar) 2013 *	(Oct-Dec) 2012 *	(Jan-Mar) 2012	Last Quarter	Last Year
Room (\$Thousand)	125,694	92,375	106,152	36.1%	18.4%
Meals (\$Thousand)	219,590	208,892	210,060	5.1%	4.5%
Alcohol (\$Thousand)	46,021	38,347	41,311	20.0%	11.4%

* Numbers are preliminary.

** All Business Receipts are for the Calendar Year (CY).

Vermont DEPARTMENT OF LABOR
ECONOMIC AND TRAVEL INDICATORS

Vermont Economic and Travel Indicators is published by the Economic & Labor Market Information Section of the VT Department of Labor. This publication can be found on our website: www.vtLmi.info

For more information or email address changes: Phone: (802)828-4202
or email: Labor-Lmi@state.vt.us

Data sources for this publication are: U.S.Census Bureau; Burlington Airport Administration; Vt. Departments of Labor, Finance & Management, Forests, Parks & Recreation, Taxes, Motor Vehicles, Vermont Information Center Division, Buildings & General Services, Vt. Agency of Transportation; Secretary of State's Office; Vt. Division for Historic Preservation; selected banks and travel attractions.

Equal opportunity is the law. The State of Vermont is an Equal Opportunity / Affirmative Action Employer. Applications from women, individuals with disabilities, and people from diverse cultural backgrounds are encouraged. Auxiliary aids and services are available upon request to individuals with disabilities. 711 (TTY/Relay Service) or (802) 828-4203 TDD (Vermont Department of Labor).