

# VERMONT ECONOMIC AND TRAVEL INDICATORS

## MAY 2012

visit our web site at: [www.vtLmi.info](http://www.vtLmi.info)

Labor Market & Business Activity	Current	Last	Year	% Change	
	Month	Month	Ago	Last Month	Last Year
Employment (NonFarm,S.A.,Thousand) *	303.5	300.2	299.0	1.1%	1.5%
Avg. Weekly Hours (Manufacturing) *	37.7	37.4	38.9	0.8%	-3.1%
Unemployment Rate (S. A. %)	4.6	4.6	5.6	0.0%	-17.9%
U.I. Initial Claims	3,492	4,998	4,044	-30.1%	-13.6%
U.I. Exhaustees	550	602	838	-8.6%	-34.4%
DOL Jobs Filled (last 12 months)	575	567	701	1.4%	-18.0%
Passenger Car Registrations	37,933	35,847	37,039	5.8%	2.4%
Total Current Car Registrations	415,964	415,840	414,343	0.0%	0.4%
Total Current Pick-Up Truck Reg.	109,428	109,844	110,904	-0.4%	-1.3%
Bank Deposits - Survey (\$Million)	6,311	6,278	5,817	0.5%	8.5%
New Business Incorporations **	38	39	37	-2.6%	2.7%
Airport Enplanements (B.I.A.)	51,309	51,642	50,774	-0.6%	1.1%

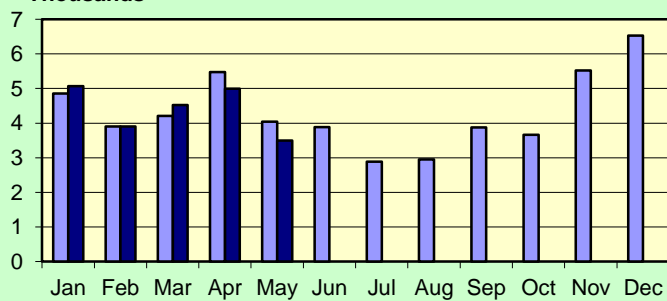
\* Numbers are preliminary. \*\* Includes "closed" corporations.

State Tax Revenues (\$Million)	Current	Fiscal Year	FYTD	% Change	
	Month	To Date	Last Year	Last Year	Last FYTD
<b>General Fund</b>	<b>68.2</b>	<b>1085.9</b>	<b>1054.2</b>	<b>7.7%</b>	<b>3.0%</b>
Personal Income	29.1	537.6	494.3	-6.4%	8.7%
Sales & Use	17.0	209.7	199.4	13.6%	5.2%
Corporate Income	-1.5	71.6	73.5	NA	-2.5%
Rooms & Meals	8.2	117.6	113.9	9.7%	3.3%
Property Transfer	0.7	7.0	7.4	10.9%	-6.5%
Other *	6.2	73.1	77.7	11.4%	-6.0%
<b>Transportation Fund</b>	<b>20.5</b>	<b>198.7</b>	<b>193.3</b>	<b>5.5%</b>	<b>2.8%</b>
Gasoline	4.3	54.2	55.7	-8.6%	-2.6%
Purchase and Use	5.2	48.3	44.4	12.1%	8.8%
Motor Vehicle Fees	8.5	65.5	63.6	14.0%	2.9%
Other	1.2	16.7	15.9	-14.0%	5.0%
<b>Education Fund, non-property tax component</b>	<b>13.0</b>	<b>148.5</b>	<b>140.2</b>	<b>9.3%</b>	<b>5.9%</b>

\* Includes: Insurance, Inheritance & Estate, Bank Franchise, Telephone, Liquor, Beverage, Fees and Other Taxes.

### UI Initial Claims 2011-2012

Thousands

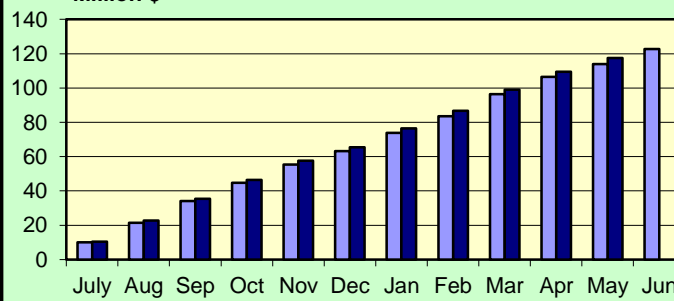


Source: Vt. Department of Labor

■ 2011 ■ 2012

### Rooms & Meals Tax Revenues to Date FY2011-FY2012

Million \$



Source: Vt. Dept. of Finance & Management

■ 2011 ■ 2012

## MAY 2012

### Construction

Residential Building Permits	Current	Year	Year	Year To Date	
	Month	To Date	Ago	Last Year	% Change
Housing Units	153	524	135	487	7.6%
Estimated Value (\$thousand)	28,553	91,521	19,618	76,121	20.2%

Employment	Current	Last	Year	% Change	
	Month	Month	Ago	Last Month	Last Year
Construction Emp. (S.A.,thousand)	13.8	14.3	13.5	-3.5%	2.2%

Travel & Tourism	Current	Last	Year	% Change	
	Month	Month	Ago	Last Month	Last Year

Leisure & Hospitality Emp. (S.A.,thousand)	32.8	31.1	32.7	5.5%	0.3%
Selected Traffic Volume *	71,318	67,230	69,351	6.1%	2.8%

Welcome Center Counts, Total	69,255	56,690	69,218	22.2%	0.1%
Guilford	48,331	38,799	46,821	24.6%	3.2%
Fair Haven	11,908	9,627	13,452	23.7%	-11.5%
Georgia (Southbound)	9,016	8,264	8,945	9.1%	0.8%

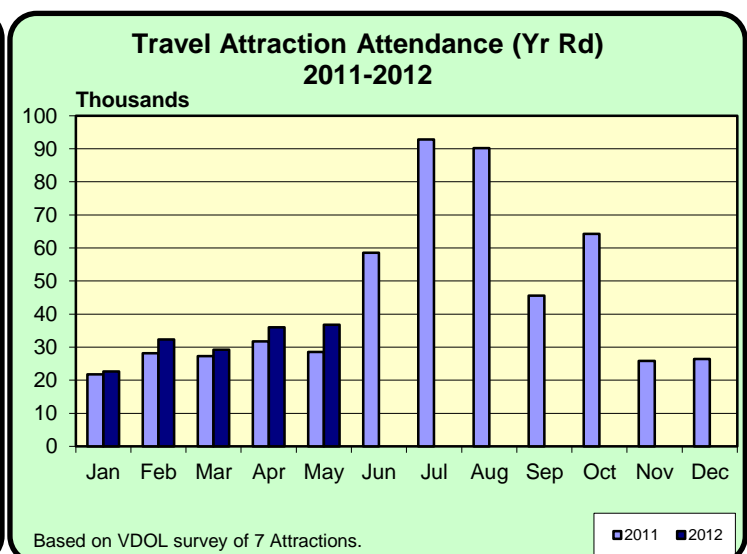
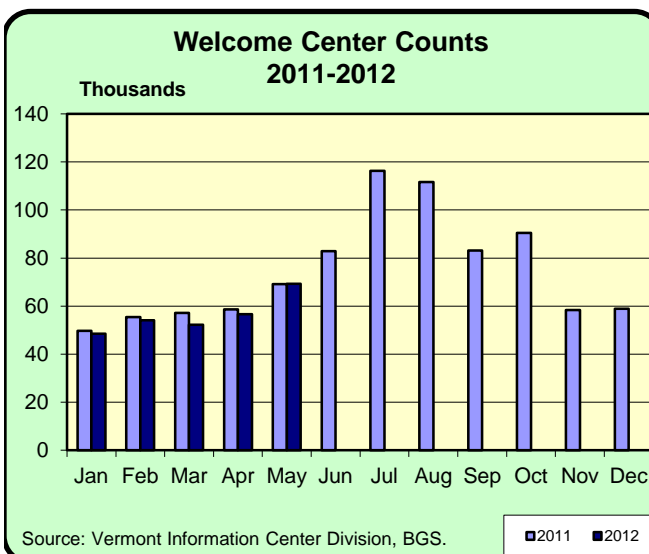
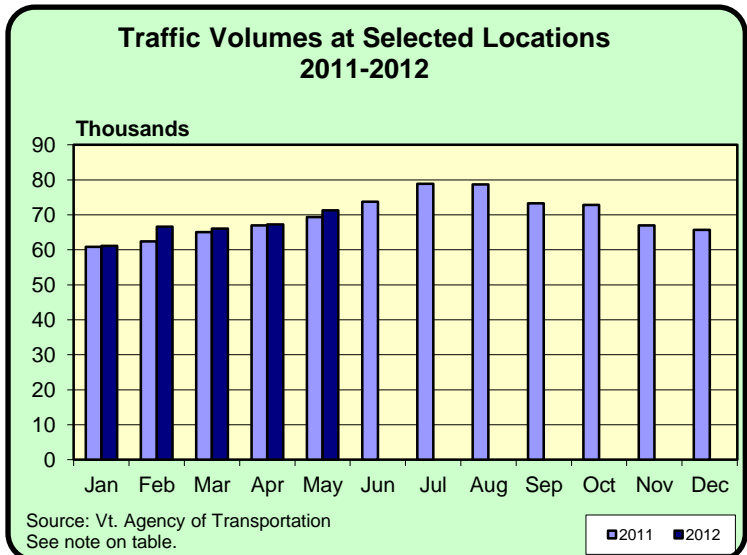
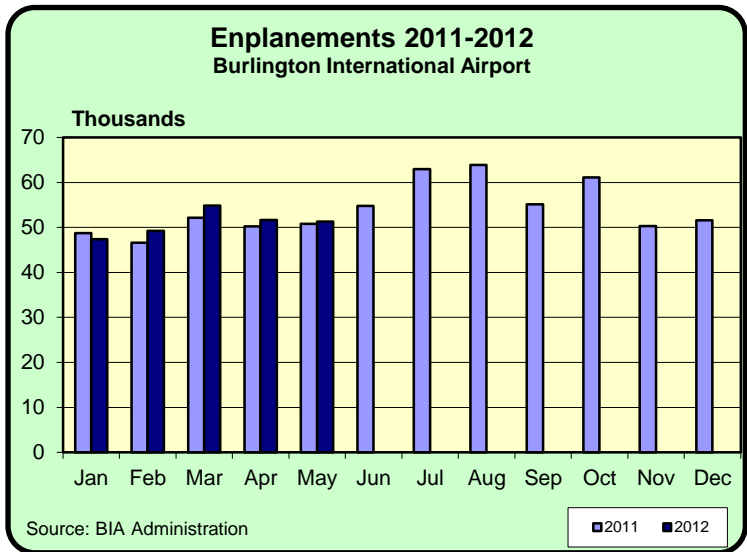
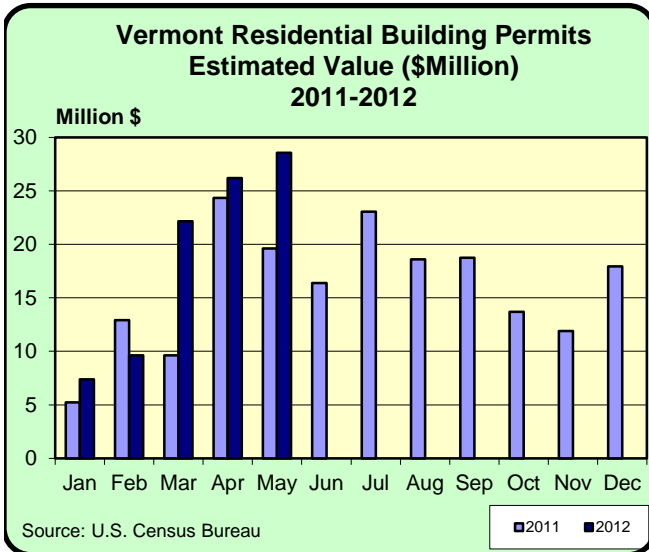
\* Missing one location for 2011, 2012 data was removed for comparability.

Seasonal Indicators	Current	Season	Year	Season To Date	
	Month	To Date	Ago	Year Ago	% Change

Attendance Surveys					
State Parks (Day Use)	22,565	22,565	12,900	12,900	74.9%
State Campgrounds (Campers)	26,707	26,707	21,442	21,442	24.6%
Travel Attr. & Museums (Summer) *	22,168	22,168	20,698	20,698	7.1%
Travel Attr. & Museums (Year Round) **	36,801	157,102	28,568	137,554	14.2%

\* Based on VDOL survey of 9 Attractions. \* Missing 1 attraction. \*\* Based on VDOL survey of 7 attractions.

## MAY 2012



**MAY 2012**

Rooms & Meals Business Receipts **	CY 1st Qtr	CY 4th Qtr	CY 1st Qtr	% Change	
	(Jan-Mar) 2012 *	(Oct-Dec) 2011 *	(Jan-Mar) 2011	Last Quarter	Last Year
Room (\$Thousand)	106,416	87,176	110,335	22.1%	-3.6%
Meals (\$Thousand)	210,134	200,764	199,557	4.7%	5.3%
Alcohol (\$Thousand)	41,348	35,595	40,349	16.2%	2.5%

\* Numbers are preliminary.

\*\* All Business Receipts are for the Calendar Year (CY).

**Vermont DEPARTMENT OF LABOR**  
**ECONOMIC AND TRAVEL INDICATORS**

Vermont Economic and Travel Indicators is published by the Economic & Labor Market Information Section of the VT Department of Labor. This publication can be found on our website: [www.vtLmi.info](http://www.vtLmi.info)

For more information or email address changes: Phone: (802)828-4202  
or email: [Labor-Lmi@state.vt.us](mailto:Labor-Lmi@state.vt.us)

Data sources for this publication are: U.S. Census Bureau; Burlington Airport Administration; Vt. Departments of Labor, Finance & Management, Forests, Parks & Recreation, Taxes, Motor Vehicles, Vermont Information Center Division, Buildings & General Services, Vt. Agency of Transportation; Secretary of State's Office; Vt. Division for Historic Preservation; selected banks and travel attractions.

Equal opportunity is the law. The State of Vermont is an Equal Opportunity / Affirmative Action Employer. Applications from women, individuals with disabilities, and people from diverse cultural backgrounds are encouraged. Auxiliary aids and services are available upon request to individuals with disabilities. 711 (TTY/Relay Service) or (802) 828-4203 TDD (Vermont Department of Labor).