

VERMONT ECONOMIC AND TRAVEL INDICATORS

FEBRUARY 2012

visit our web site at: www.vtLmi.info

Labor Market & Business Activity	Current	Last	Year	% Change	
	Month	Month	Ago	Last Month	Last Year
Employment (NonFarm,S.A.,Thousand) *	302.1	300.8	299.0	0.4%	1.0%
Avg. Weekly Hours (Manufacturing) *	37.4	38.0	39.5	-1.6%	-5.3%
Unemployment Rate (S. A. %)	4.9	5.0	5.9	-2.0%	-16.9%
U.I. Initial Claims	3,901	5,073	3,902	-23.1%	0.0%
U.I. Exhaustees	425	456	544	-6.8%	-21.9%
DOL Jobs Filled (last 12 months)	582	582	785	0.0%	-25.9%
Passenger Car Registrations	27,445	24,187	24,613	13.5%	11.5%
Total Current Car Registrations	413,630	413,433	412,067	0.0%	0.4%
Total Current Pick-Up Truck Reg.	109,964	110,086	111,295	-0.1%	-1.2%
Bank Deposits - Survey (\$Million)	6,112	6,022	5,814	1.5%	5.1%
New Business Incorporations **	49	59	55	-16.9%	-10.9%
Airport Enplanements (B.I.A.)	49,226	47,388	46,600	3.9%	5.6%

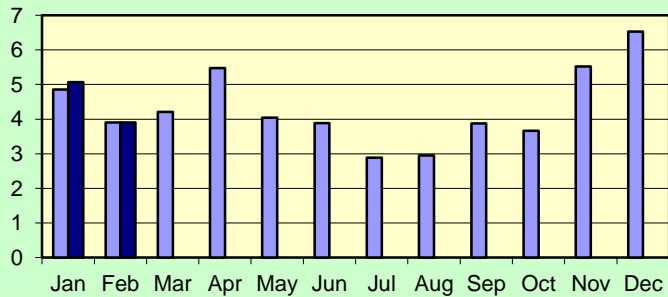
* Numbers are preliminary. ** Includes "closed" corporations.

State Tax Revenues (\$Million)	Current	Fiscal Year	FYTD	% Change	
	Month	To Date	Last Year	Last Year	Last FYTD
General Fund	52.3	750.6	740.8	2.0%	1.3%
Personal Income	-1.2	363.2	338.1	NA	7.4%
Sales & Use	16.9	157.3	148.4	6.4%	6.0%
Corporate Income	-3.5	35.4	48.7	-583.3%	-27.3%
Rooms & Meals	10.4	86.8	83.6	5.2%	3.8%
Property Transfer	0.5	5.1	5.7	-2.0%	-10.2%
Other *	4.9	51.2	55.9	20.2%	-8.5%
Transportation Fund	16.4	140.0	135.7	13.3%	3.2%
Gasoline	4.3	40.3	41.0	0.9%	-1.7%
Purchase and Use	3.5	33.5	30.8	23.2%	8.8%
Motor Vehicle Fees	5.4	43.6	42.5	16.5%	2.6%
Other	1.9	12.2	11.2	20.4%	9.0%
Education Fund, non-property tax component	11.9	108.6	102.6	0.8%	5.8%

* Includes: Insurance, Inheritance & Estate, Bank Franchise, Telephone, Liquor, Beverage, Fees and Other Taxes.

**UI Initial Claims
2011-2012**

Thousands

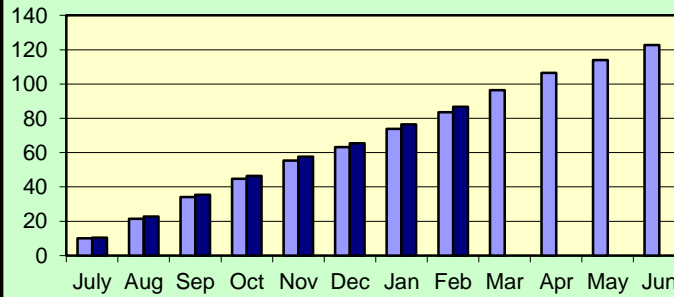


Source: Vt. Department of Labor

■ 2011 ■ 2012

**Rooms & Meals Tax Revenues to Date
FY2011-FY2012**

Million \$



Source: Vt. Dept. of Finance & Management

■ 2011 ■ 2012

FEBRUARY 2012

Construction

Residential Building Permits	Current	Year	Year	Year To Date	
	Month	To Date	Ago	Last Year	% Change
Housing Units	55	81	110	138	-41.3%
Estimated Value (\$thousand)	9,634	15,751	12,920	17,504	-10.0%

Employment	Current	Last	Year	% Change	
	Month	Month	Ago	Last Month	Last Year
Construction Emp. (S.A.,thousand)	14.2	14.1	13.6	0.7%	4.4%

Travel & Tourism	Current	Last	Year	% Change	
	Month	Month	Ago	Last Month	Last Year
Leisure & Hospitality Emp. (S.A.,thousand)	32.5	32.8	32.6	-0.9%	-0.3%
Selected Traffic Volume *	66,596	61,125	62,442	9.0%	6.7%

>Welcome Center Counts, Total	54,160	48,493	55,400	11.7%	-2.2%
Guilford	41,854	36,522	43,639	14.6%	-4.1%
Fair Haven	7,363	7,047	7,406	4.5%	-0.6%
Georgia (Southbound)	4,943	4,924	4,355	0.4%	13.5%

* Missing one location, 2010 data was removed for comparability.

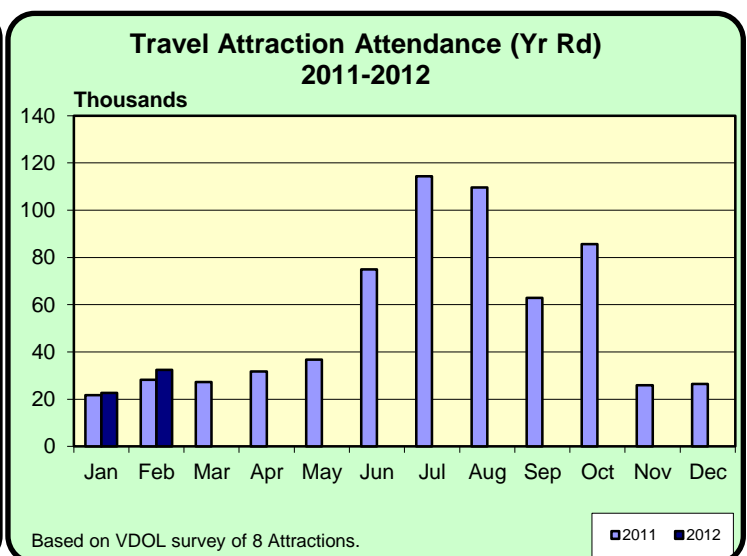
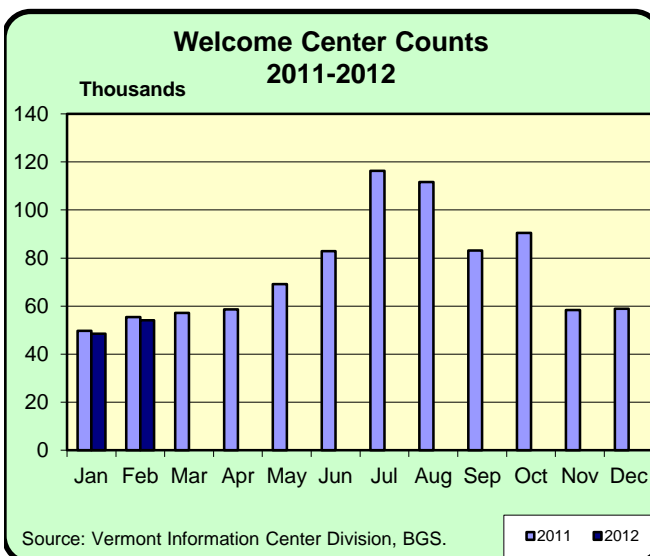
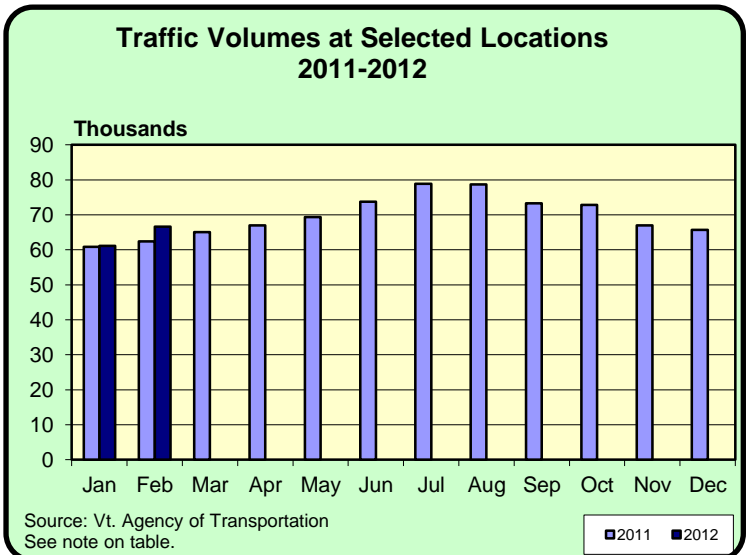
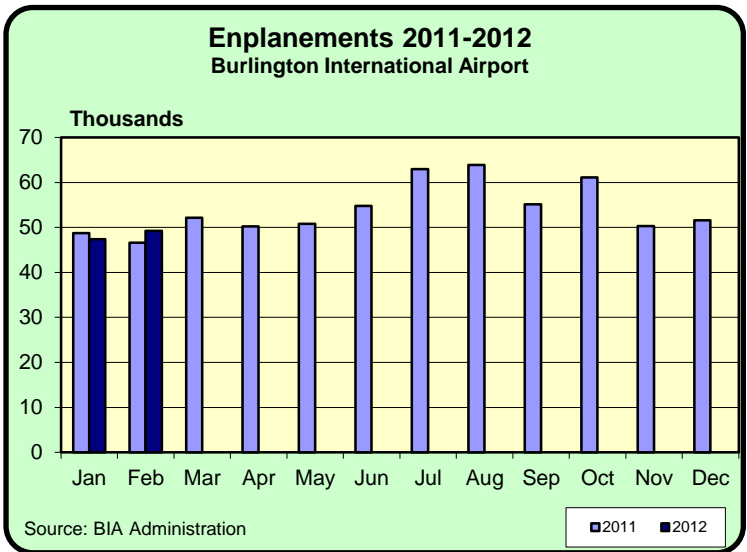
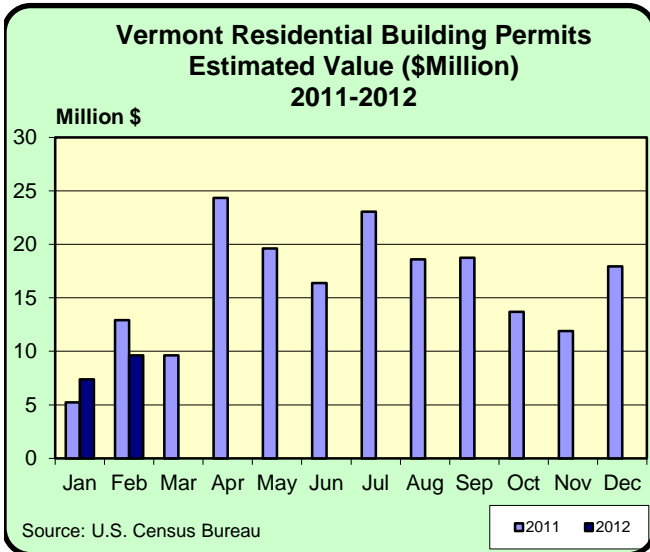
Seasonal Indicators	Current	Season	Year	Season To Date	
	Month	To Date	Ago	Year Ago	% Change

Attendance Surveys

State Parks (Day Use)	NA	NA	NA	NA	NA
State Campgrounds (Campers)	NA	NA	NA	NA	NA
Travel Attr. & Museums (Summer) *	NA	NA	NA	NA	NA
Travel Attr. & Museums (Year Round) **	32,369	55,047	28,217	49,968	10.2%

* Based on VDOL survey of 9 Attractions ** Based on VDOL survey of 8 attractions.

FEBRUARY 2012



FEBRUARY 2012

Rooms & Meals Business Receipts **	CY 4th Qtr	CY 3rd Qtr	CY 4th Qtr	% Change	
	(Oct-Dec) 2011 *	(Jul-Sep) 2011	(Oct-Dec) 2010	Last Quarter	Last Year
Room (\$Thousand)	87,176	121,254	86,175	-28.1%	1.2%
Meals (\$Thousand)	200,764	234,381	194,804	-14.3%	3.1%
Alcohol (\$Thousand)	35,595	40,906	34,446	-13.0%	3.3%

* Numbers are preliminary.

** All Business Receipts are for the Calendar Year (CY).

Vermont DEPARTMENT OF LABOR
ECONOMIC AND TRAVEL INDICATORS

Vermont Economic and Travel Indicators is published by the Economic & Labor Market Information Section of the VT Department of Labor. This publication can be found on our website: www.vtLmi.info

For more information or email address changes: Phone: (802)828-4202
or email: Labor-Lmi@state.vt.us

Data sources for this publication are: U.S. Census Bureau; Burlington Airport Administration; Vt. Departments of Labor, Finance & Management, Forests, Parks & Recreation, Taxes, Motor Vehicles, Vermont Information Center Division, Buildings & General Services, Vt. Agency of Transportation; Secretary of State's Office; Vt. Division for Historic Preservation; selected banks and travel attractions.

Equal opportunity is the law. The State of Vermont is an Equal Opportunity / Affirmative Action Employer. Applications from women, individuals with disabilities, and people from diverse cultural backgrounds are encouraged. Auxiliary aids and services are available upon request to individuals with disabilities. 711 (TTY/Relay Service) or (802) 828-4203 TDD (Vermont Department of Labor).