

VERMONT ECONOMIC AND TRAVEL INDICATORS

JUNE 2011

visit our web site at: www.vtLmi.info

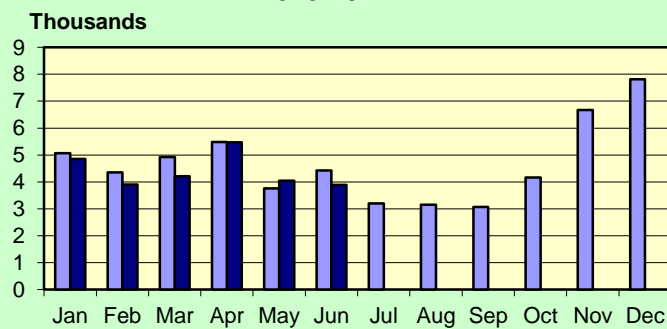
Labor Market & Business Activity	Current	Last	Year	% Change	
	Month	Month	Ago	Last Month	Last Year
Employment (NonFarm,S.A.,Thousand) *	302.2	299.5	296.0	0.9%	2.1%
Avg. Weekly Hours (Manufacturing) *	39.0	38.9	38.6	0.3%	1.0%
Unemployment Rate (S. A. %)	5.5	5.4	6.2	1.9%	-11.3%
U.I. Initial Claims	3,889	4,044	4,421	-3.8%	-12.0%
U.I. Exhaustees	619	838	990	-26.1%	-37.5%
DOL Jobs Filled (last 12 months)	638	701	640	-9.0%	-0.3%
Passenger Car Registrations	36,976	37,039	37,442	-0.2%	-1.2%
Total Current Car Registrations	414,424	414,343	411,864	0.0%	0.6%
Total Current Pick-Up Truck Reg.	110,795	110,904	112,256	-0.1%	-1.3%
Bank Deposits - Survey (\$Million)	5,697	5,817	5,867	-2.1%	-2.9%
New Business Incorporations **	47	37	62	27.0%	-24.2%
Airport Enplanements (B.I.A.)	54,805	50,774	54,572	7.9%	0.4%

* Numbers are preliminary. ** Includes "closed" corporations.

State Tax Revenues (\$Million)	Current	Fiscal Year	FYTD	% Change	
	Month	To Date	Last Year	Last Year	Last FYTD
General Fund	112.8	1151.2	1038.4	9.1%	10.9%
Personal Income	58.9	553.3	486.0	6.5%	13.9%
Sales & Use	18.2	217.6	207.4	11.7%	4.9%
Corporate Income	16.2	89.7	74.8	19.2%	19.8%
Rooms & Meals	8.9	122.8	118.0	4.0%	4.1%
Property Transfer	0.9	8.4	7.8	16.3%	7.6%
Other *	8.2	83.6	77.0	2.5%	8.5%
Transportation Fund	24.3	217.6	213.3	2.6%	2.0%
Gasoline	5.0	60.6	61.0	-2.8%	-0.6%
Purchase and Use	7.0	51.4	46.5	18.2%	10.5%
Motor Vehicle Fees	8.7	72.3	72.5	2.2%	-0.3%
Other	2.0	17.9	18.2	-7.3%	-1.9%
Education Fund, non-property tax component	14.2	154.4	148.6	6.8%	3.9%

* Includes: Insurance, Inheritance & Estate, Bank Franchise, Telephone, Liquor, Beverage, Fees and Other Taxes.

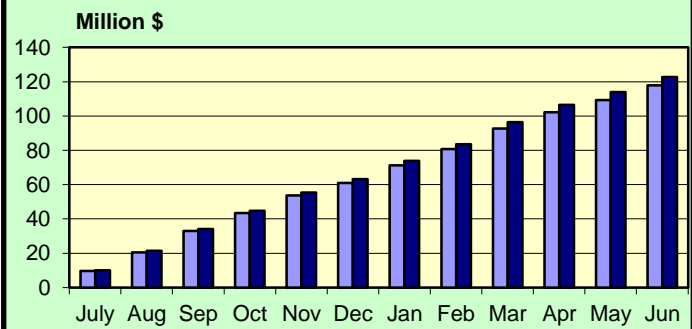
UI Initial Claims 2010-2011



Source: Vt. Department of Labor

■ 2010 ■ 2011

Rooms & Meals Tax Revenues to Date FY2010-FY2011



Source: Vt. Dept. of Finance & Management

■ 2010 ■ 2011

JUNE 2011

Construction

Residential Building Permits	Current	Year	Year	Year To Date	
	Month	To Date	Ago	Last Year	% Change
Housing Units	85	572	90	797	-28.2%
Estimated Value (\$thousand)	16,380	93,351	17,466	124,740	-25.2%

Employment	Current	Last	Year	% Change	
	Month	Month	Ago	Last Month	Last Year
Construction Emp. (S.A.,thousand)	13.4	12.8	13.2	4.7%	1.5%

Travel & Tourism	Current	Last	Year	% Change	
	Month	Month	Ago	Last Month	Last Year
Leisure & Hospitality Emp. (S.A.,thousand)	33.1	32.2	32.2	2.8%	2.8%
Selected Traffic Volume *	73,761	69,361	75,452	6.3%	-2.2%

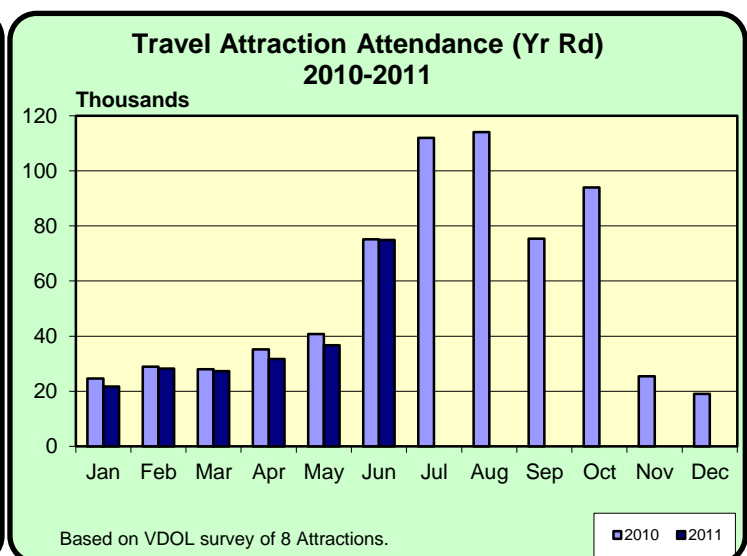
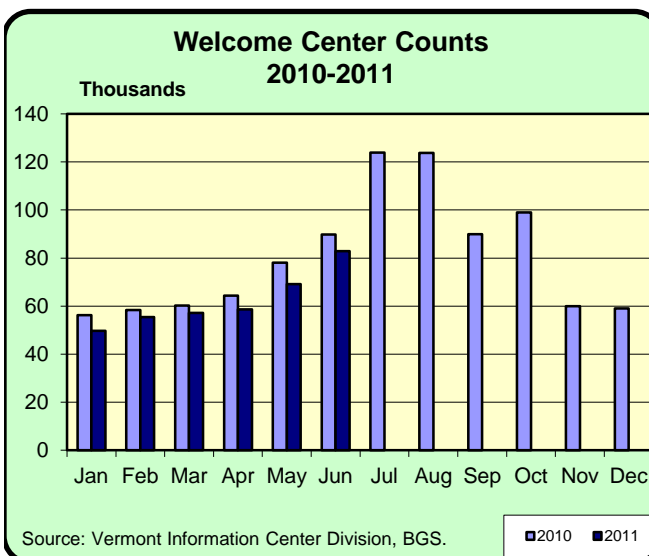
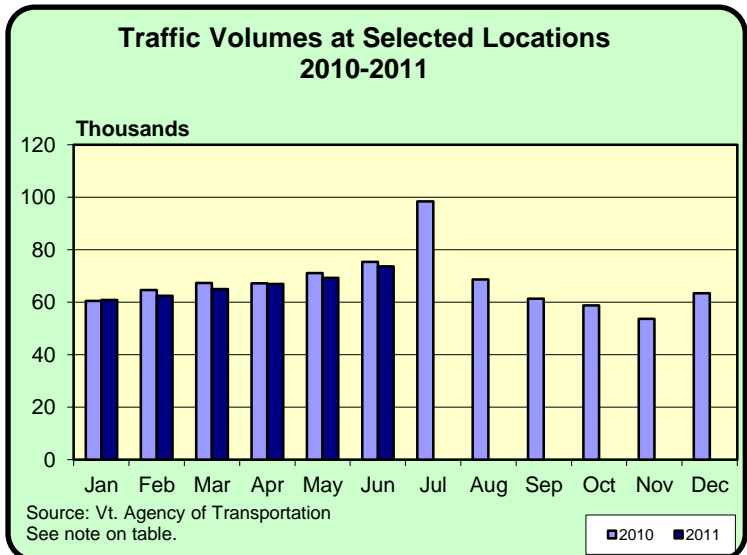
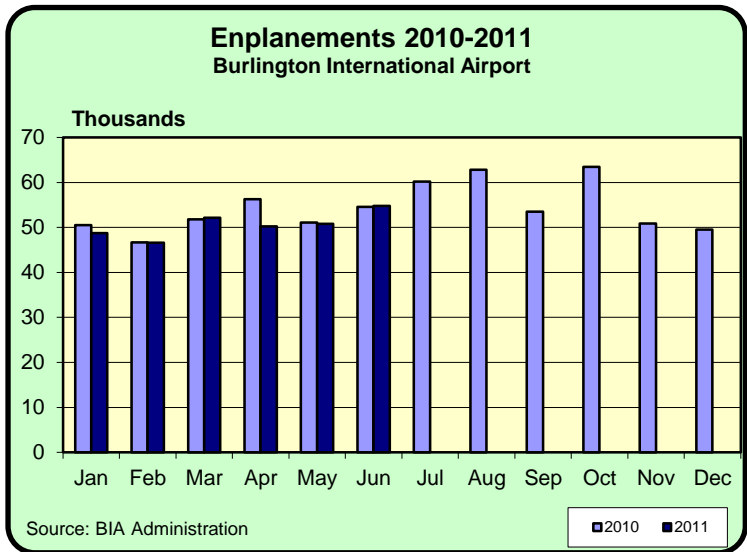
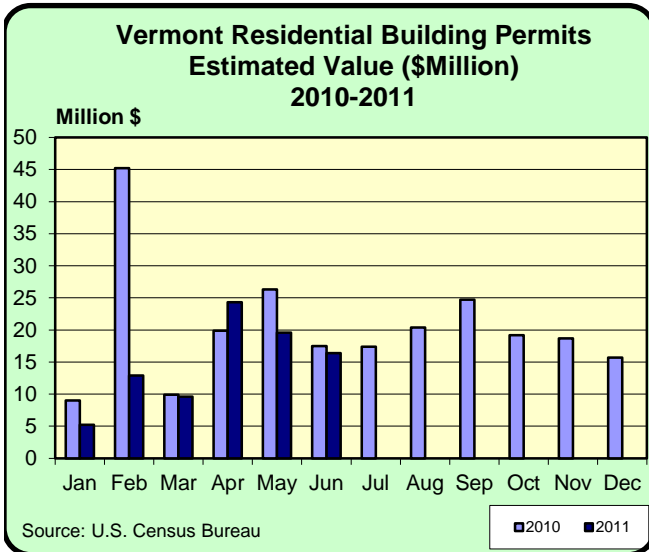
>Welcome Center Counts, Total	82,840	69,218	89,845	19.7%	-7.8%
Guilford	53,519	46,821	59,475	14.3%	-10.0%
Fair Haven	19,244	13,452	19,309	43.1%	-0.3%
Georgia (Southbound)	10,077	8,945	11,061	12.7%	-8.9%

* Missing one location, 2010 data was removed for comparability.

Seasonal Indicators	Current	Season	Year	Season To Date	
	Month	To Date	Ago	Year Ago	% Change
Attendance Surveys					
State Parks (Day Use)	67,137	80,037	79,075	98,804	-19.0%
State Campgrounds (Campers)	50,223	71,675	53,351	77,254	-7.2%
Travel Attr. & Museums (Summer) *	30,078	44,028	35,426	52,702	-16.5%
Travel Attr. & Museums (Year Round) **	74,960	220,706	75,126	232,621	-5.1%

* Based on VDOL survey of 9 Attractions ** Based on VDOL survey of 8 attractions.

JUNE 2011



JUNE 2011

Rooms & Meals Business Receipts **	CY 4th Qtr	CY 3rd Qtr	CY 4th Qtr	% Change	
	(Oct-Dec) 2010 *	(Jul-Sep) 2010	(Oct-Dec) 2009	Last Quarter	Last Year
Room (\$Thousand)	86,165	112,055	77,964	-23.1%	10.5%
Meals (\$Thousand)	194,807	227,970	186,204	-14.5%	4.6%
Alcohol (\$Thousand)	34,415	38,752	32,363	-11.2%	6.3%

* Numbers are preliminary.

** All Business Receipts are for the Calendar Year (CY).

Vermont DEPARTMENT OF LABOR
ECONOMIC AND TRAVEL INDICATORS

Vermont Economic and Travel Indicators is published by the Economic & Labor Market Information Section of the VT Department of Labor. This publication can be found on our website: www.vtLmi.info

For more information or email address changes: Phone: (802)828-4202
or email: Labor-Lmi@state.vt.us

Data sources for this publication are: U.S. Census Bureau; Burlington Airport Administration; Vt. Departments of Labor, Finance & Management, Forests, Parks & Recreation, Taxes, Motor Vehicles, Vermont Information Center Division, Buildings & General Services, Vt. Agency of Transportation; Secretary of State's Office; Vt. Division for Historic Preservation; selected banks and travel attractions.

Equal opportunity is the law. The State of Vermont is an Equal Opportunity / Affirmative Action Employer. Applications from women, individuals with disabilities, and people from diverse cultural backgrounds are encouraged. Auxiliary aids and services are available upon request to individuals with disabilities. 711 (TTY/Relay Service) or (802) 828-4203 TDD (Vermont Department of Labor).