

Employment and Wages: 2005

Client Meeting
• Markets —
— D
CYCLICALS

Vermont Department of Labor
Labor Market Information

Visit our web site at:

www.vtLmi.info/industry.cfm

For current and historical information

The State of Vermont is an Equal Opportunity / Affirmative Action Employer. Applications from women, individuals with disabilities, and people from diverse cultural backgrounds are encouraged. Auxiliary aids and services are available upon request to individuals with disabilities. 711 (TTY/Relay Service) or (802) 828-4203 TDD (Department of Labor)

Employment and Wages

Covered by Unemployment Insurance

2005

July 2006

Vermont Department of Labor

Economic & Labor Market Information Section

Andy Condon, Chief

Patricia McDonald, Commissioner

P.O. Box 488

Montpelier, VT 05602

Telephone (802) 828-4202

Contents

Page

1	Introduction
2	Summary
	Employment Conditions
3	Employment & Wages 1996-2005
5	Vermont
9	County
11	Town
	2005 Statistics
14	List of Tables
15	Industry Groups
21	County and Town
27	County and Industry
43	Size Class by Industry
45	Size Class by County
	Reference
47	Appendix I: Glossary of Terms
49	Appendix II: Industry Titles

Introduction

This publication presents 2005 annual data on total UI covered jobs and wages in the State of Vermont. The data is published by industry according to the 2002 North American Industry Classification System (NAICS). The Economic & Labor Market Information Section of the Vermont Department of Labor in cooperation with the U. S. Department of Labor, Bureau of Labor Statistics, prepares the publication.

The information in this publication is based on data employers provide to the Vermont Department of Labor in conformance with state and federal unemployment insurance laws. The data for both private and public workers are compiled for the Covered Employment and Wages program from the quarterly tax reports submitted to the Department by employers subject to State Unemployment Insurance (UI) laws and Federal Employees (UCFE) program.

To insure quality in the data, the Department edits, processes, and analyzes the data using the Quarterly Census of Employment and Wages data processing system. Compilation and edits are done on a quarterly basis and the annual data is compiled upon completion of the fourth quarter.

Copies of this summary and the original non-confidential data tables are available at the Vermont Department of Labor, and are accessible on line at www.vtlmi.info

To assist in the understanding of this summary of covered jobs and wage data we have provided a glossary of terms in Appendix I at the end of this document. If you have any further questions about this publication, please contact Melissa Butryman at (802) 828-4319 or Craig Colvin (802) 828-4320.

Summary

In 2005 the Vermont economy experienced its second straight year of job gains. The addition of 2,450 jobs (0.8%) increased the state's average employment to 300,941.

Employment in private industry, goods producing sector remained flat over the year. The construction industry displayed the largest increase up 193 jobs (1.2%), and non-durable goods manufacturing suffered the largest loss a decline of 142 jobs (-1.3%).

Service providing industry felt an increase of 1,695 jobs over the year, with the largest increase in health care & social assistance up 1013 jobs (2.5%). The industry with the largest loss was other services, down 238 jobs (-2.6%).

The government sector saw an increase of 752 jobs (1.5%) overall. Federal government experienced a decrease of 168 jobs (-2.7%), state government gained 292 jobs (1.9%), and local government added 628 (2.2%) additional jobs.

In 2005, over 10 billion dollars in wages were paid to workers. This is an increase of 3.6 percent from 2004. The average annual wage per job increased by \$923 (2.8%) to \$34,199.

Chittenden, Washington, and Rutland counties continued to account for more than 50 percent of the total covered employment in Vermont. Essex and Grand Isle counties contributed the lowest numbers of employment, 1.2 percent of total employment combined.

Chittenden and Washington Counties are the only counties that exceeded Vermont's average annual wage of \$34,199. Grand Isle reported the lowest average annual wage. It should be noted that wages and employment are tracked at the location of the job, not residence of employee.

There were seven towns with employment of 10,000 or more. They include Burlington, South Burlington, Rutland City, Essex, Brattleboro, Williston, and Bennington. These towns accounted for 36.2 percent of total employment in Vermont.

There are forty-eight towns with employment between 1,000 and 9,999. Thirty-five had an increase in employment, eleven show a decrease and 2 remained unchanged.

Table 1**Vermont Annual Average Employment : 1996 - 2005**

Industry - Ownership/Sector	1996	1997	1998	1999	2000	2001	2002	2003	2004	2005
Total Covered - all ownerships	270,369	274,355	280,294	288,202	296,468	298,168	295,443	294,288	298,491	300,941
Private ownership	227,053	230,707	236,259	243,018	249,122	250,106	246,527	244,531	248,094	249,792
Goods Producing	58,943	59,810	61,563	63,229	64,803	63,918	58,576	55,811	56,714	56,717
Agriculture, forestry, fishing and hunting	1,801	1,872	1,960	2,114	2,206	2,256	2,156	2,174	2,301	2,315
Mining	842	812	853	894	938	931	829	772	762	695
Construction	12,582	12,915	13,691	14,480	14,941	15,218	14,894	15,378	16,674	16,867
Manufacturing	43,718	44,210	45,059	45,741	46,719	45,514	40,697	37,486	36,978	36,840
Durable Goods	30,156	31,147	32,107	32,746	34,031	33,467	29,388	26,741	26,418	26,422
Non-Durable Goods	13,561	13,064	12,952	12,995	12,687	12,047	11,309	10,745	10,560	10,418
Service Providing	168,110	170,897	174,696	179,789	184,319	186,188	187,951	188,720	191,380	193,075
Wholesale trade	9,750	9,676	9,559	9,685	9,946	10,074	10,028	10,256	10,198	10,072
Retail trade	36,513	37,161	37,594	38,597	39,676	39,913	40,104	39,519	40,042	40,464
Transportation and warehousing	6,381	6,419	6,585	6,709	6,794	6,722	6,772	6,574	6,759	6,927
Utilities	1,868	1,869	1,852	1,753	1,692	1,653	1,710	1,726	1,714	1,703
Information	6,215	6,238	6,424	6,648	6,854	6,685	6,653	6,495	6,363	6,232
Financial Activities	12,464	12,529	12,662	12,981	12,664	12,887	12,904	12,989	13,005	12,914
Professional and Business Services	16,946	17,862	19,298	20,448	20,842	20,778	20,376	20,394	21,272	21,846
Education and Health Services	38,229	38,776	39,757	41,236	42,823	44,273	46,850	48,698	49,688	50,793
Leisure and Hospitality	31,319	31,647	32,026	32,534	33,009	32,931	33,059	32,725	33,043	33,064
Other services, except public administration	8,424	8,722	8,939	9,196	10,018	10,270	9,495	9,343	9,297	9,059
Government	43,316	43,648	44,035	45,184	47,345	48,062	48,916	49,757	50,397	51,149
Federal Government	5,481	5,403	5,456	5,605	6,064	5,772	5,930	6,250	6,248	6,080
State government	13,338	13,493	13,385	13,737	14,661	15,163	15,028	15,310	15,656	15,948
Local government	24,497	24,752	25,194	25,841	26,620	27,127	27,959	28,198	28,493	29,120

Table 2**Vermont Annual Average Wage: 1996 - 2005**

Industry - Ownership/Sector	1996	1997	1998	1999	2000	2001	2002	2003	2004	2005
Total Covered - all ownerships	24,479	25,506	26,624	27,589	28,925	30,239	31,041	32,090	33,276	34,199
Private ownership	24,035	25,021	26,209	27,235	28,704	29,920	30,613	31,571	32,724	33,648
Goods Producing	31,173	32,564	33,827	34,914	37,120	38,568	39,455	40,344	41,238	42,332
Agriculture, forestry, fishing and hunting	17,414	17,977	18,619	19,010	19,523	20,617	21,176	21,662	22,361	23,216
Mining	33,214	34,900	35,336	35,824	35,350	35,152	39,056	41,314	39,807	41,590
Construction	25,581	26,552	27,891	29,401	31,356	32,800	32,821	33,388	34,779	36,322
Manufacturing	33,310	34,895	36,264	37,377	39,830	41,455	42,860	44,261	45,354	46,298
Durable Goods	36,200	37,469	38,844	39,869	42,195	44,453	46,324	47,773	48,966	49,807
Non-Durable Goods	26,885	28,757	29,866	31,096	33,486	33,129	33,858	35,521	36,319	37,399
Service Providing	21,533	22,382	23,525	24,534	25,745	26,951	27,858	28,977	30,200	31,098
Wholesale trade	31,824	33,076	34,370	36,274	38,288	41,187	42,756	44,235	44,675	45,926
Retail trade	16,888	17,402	18,230	18,996	19,804	20,873	21,612	22,390	23,439	23,746
Transportation and warehousing	25,075	26,194	26,898	28,041	30,543	30,176	30,601	31,636	32,098	32,778
Utilities	49,335	50,737	56,030	58,134	60,971	64,651	70,366	68,710	78,676	80,832
Information	27,302	28,557	30,467	31,159	33,163	35,402	35,786	37,227	38,874	39,590
Financial Activities	30,572	32,235	34,267	35,334	37,866	39,996	41,590	44,513	46,154	48,255
Professional and Business Services	26,789	28,017	30,207	31,333	33,378	35,543	36,494	38,298	40,197	41,670
Education and Health Services	24,049	24,888	25,681	27,040	28,088	28,941	29,774	30,453	31,705	32,925
Leisure and Hospitality	11,640	12,228	12,802	13,248	13,842	14,211	14,689	15,223	15,976	16,262
Other services, except public administration	18,062	18,438	19,166	19,986	20,552	21,455	22,538	23,677	24,515	24,912
Government	26,806	28,067	28,852	29,493	30,091	31,897	33,198	34,637	35,994	36,888
Federal Government	36,808	39,148	40,158	39,385	40,716	43,868	46,201	47,621	51,269	53,995
State government	28,928	30,557	32,222	33,118	33,255	35,725	38,072	39,573	40,786	41,921
Local government	23,414	24,292	24,612	25,421	25,927	27,210	27,821	29,080	30,011	30,559

Table 3

Employment Growth 1996 - 2005 : Annual Job Change

Industry - Ownership/Sector	1996	1997	1998	1999	2000	2001	2002	2003	2004	2005
Total Covered - all ownerships	10,996	3,986	5,939	7,908	8,266	1,700	-2,725	-1,155	4,203	2,450
Private ownership	10,423	3,654	5,552	6,759	6,104	984	-3,579	-1,996	3,563	1,698
Goods Producing	2,915	867	1,753	1,666	1,574	-885	-5,342	-2,765	903	3
Agriculture, forestry, fishing and hunting	160	71	88	154	92	49	-99	18	127	14
Mining	42	-30	41	41	44	-7	-103	-57	-10	-67
Construction	816	333	776	789	461	277	-324	484	1,296	193
Manufacturing	1,897	492	849	682	978	-1,205	-4,817	-3,211	-508	-138
Durable Goods	1,651	991	960	639	1,285	-565	-4,079	-2,647	-323	4
Non-Durable Goods	245	-497	-112	43	-308	-640	-738	-564	-185	-142
Service Providing	7,508	2,787	3,799	5,093	4,530	1,869	1,763	769	2,660	1,695
Wholesale trade	-92	-74	-117	126	261	128	-46	228	-58	-125
Retail trade	1,678	648	433	1,003	1,079	236	192	-585	523	422
Transportation and warehousing	708	38	166	124	85	-72	50	-198	185	168
Utilities	-125	1	-17	-99	-62	-38	57	16	-12	-11
Information	375	23	186	224	206	-169	-31	-158	-132	-130
Financial Activities	-93	65	133	319	-317	224	16	85	16	-91
Professional and Business Services	1,188	916	1,436	1,150	394	-64	-403	18	878	574
Education and Health Services	2,245	547	981	1,479	1,587	1,451	2,576	1,848	990	1,105
Leisure and Hospitality	1,215	328	379	508	475	-78	128	-334	318	21
Other services, except public administration	408	298	217	257	822	252	-775	-152	-46	-238
Government	573	332	387	1,149	2,161	716	855	841	640	752
Federal Government	-35	-78	53	149	459	-292	158	320	-2	-168
State government	-158	155	-108	352	924	501	-135	282	346	292
Local government	765	255	442	647	779	507	832	239	295	628

Table 4

Employment Growth 1996 - 2005 : Annual % Job Change

Industry - Ownership/Sector	1996	1997	1998	1999	2000	2001	2002	2003	2004	2005
Total Covered - all ownerships	4.2	1.5	2.2	2.8	2.9	0.6	-0.9	-0.4	1.4	0.8
Private ownership	4.8	1.6	2.4	2.9	2.5	0.4	-1.4	-0.8	1.5	0.7
Goods Producing	5.2	1.5	2.9	2.7	2.5	-1.4	-8.4	-4.7	1.6	0.0
Agriculture, forestry, fishing and hunting	9.8	3.9	4.7	7.9	4.4	2.2	-4.4	0.8	5.8	0.6
Mining	5.3	-3.6	5.0	4.8	4.9	-0.7	-11.0	-6.8	-1.3	-8.8
Construction	6.9	2.6	6.0	5.8	3.2	1.9	-2.1	3.2	8.4	1.2
Manufacturing	4.5	1.1	1.9	1.5	2.1	-2.6	-10.6	-7.9	-1.4	-0.4
Durable Goods	5.8	3.3	3.1	2.0	3.9	-1.7	-12.2	-9.0	-1.2	0.0
Non-Durable Goods	1.8	-3.7	-0.9	0.3	-2.4	-5.0	-6.1	-5.0	-1.7	-1.3
Service Providing	4.7	1.7	2.2	2.9	2.5	1.0	0.9	0.4	1.4	0.9
Wholesale trade	-0.9	-0.8	-1.2	1.3	2.7	1.3	-0.5	2.3	-0.6	-1.2
Retail trade	4.8	1.8	1.2	2.7	2.8	0.6	0.5	-1.5	1.3	1.1
Transportation and warehousing	12.5	0.6	2.6	1.9	1.3	-1.1	0.7	-2.9	2.8	2.5
Utilities	-6.3	0.1	-0.9	-5.3	-3.5	-2.3	3.4	1.0	-0.7	-0.6
Information	6.4	0.4	3.0	3.5	3.1	-2.5	-0.5	-2.4	-2.0	-2.0
Financial Activities	-0.7	0.5	1.1	2.5	-2.4	1.8	0.1	0.7	0.1	-0.7
Professional and Business Services	7.5	5.4	8.0	6.0	1.9	-0.3	-1.9	0.1	4.3	2.7
Education and Health Services	6.2	1.4	2.5	3.7	3.8	3.4	5.8	3.9	2.0	2.2
Leisure and Hospitality	4.0	1.0	1.2	1.6	1.5	-0.2	0.4	-1.0	1.0	0.1
Other services, except public administration	5.1	3.5	2.5	2.9	8.9	2.5	-7.5	-1.6	-0.5	-2.6
Government	1.3	0.8	0.9	2.6	4.8	1.5	1.8	1.7	1.3	1.5
Federal Government	-0.6	-1.4	1.0	2.7	8.2	-4.8	2.7	5.4	0.0	-2.7
State government	-1.2	1.2	-0.8	2.6	6.7	3.4	-0.9	1.9	2.3	1.9
Local government	3.2	1.0	1.8	2.6	3.0	1.9	3.1	0.9	1.0	2.2

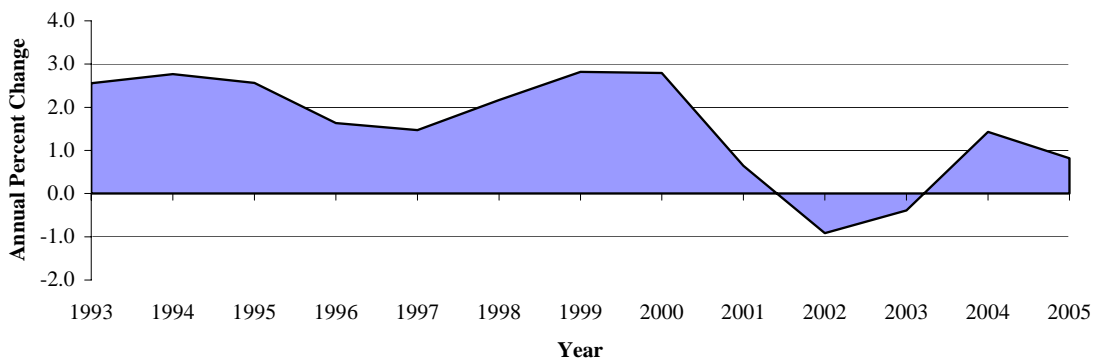
Vermont - Statewide

Employment

The total UI covered employment in Vermont added 2,450 jobs, an increase of 0.8% to 300,941. This was the second straight year of job increases. Leading the expansion was education and health services, which added 1,105 jobs over the year. Local Government and Professional and Business services each showed healthy gains adding 628, and 574 jobs respectively.

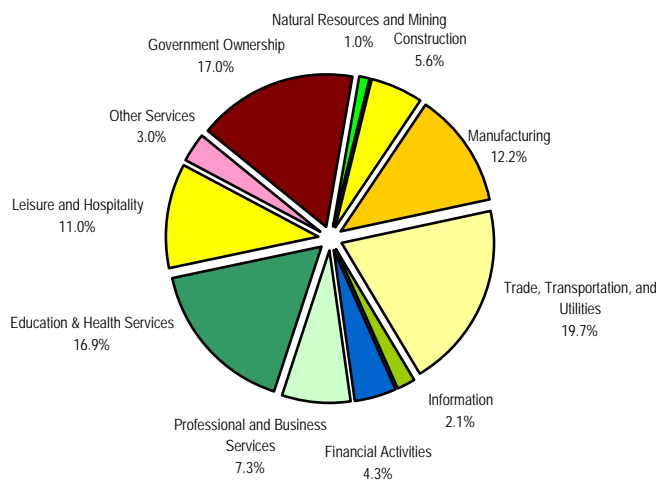
Graph 1

Total Covered Employment - Growth Rate



Graph 2

Private Industry Employment Distribution



Private Industry

Jobs in private industry made up 83.0 percent of total employment. Private industry's jobs are divided into two major categories: goods producing and service providing.

Private industry- Service providing

Service providing activity made up 193,075 jobs or 77.3% of private industry. The super-sector Trade, Transportation, and Utilities claimed the largest share with 59,168 jobs or 23.7% of private industry. The bulk of these were in retail trade 40,464 jobs, (16.2%). Education and Health services made up the second largest portion with 50,793 jobs, (20.3%). Steady growth during the year resulted in 1,105 net new jobs created. Over the past five years education and health services increased employment by 7,970. Social Assistance continued its upward trend, now accounting for 8,685 jobs. Information contributed the fewest jobs 6,232, (2.1%) to private industry.

Graph 3

Trade Industries - Employment Growth Rate
2004 to 2005

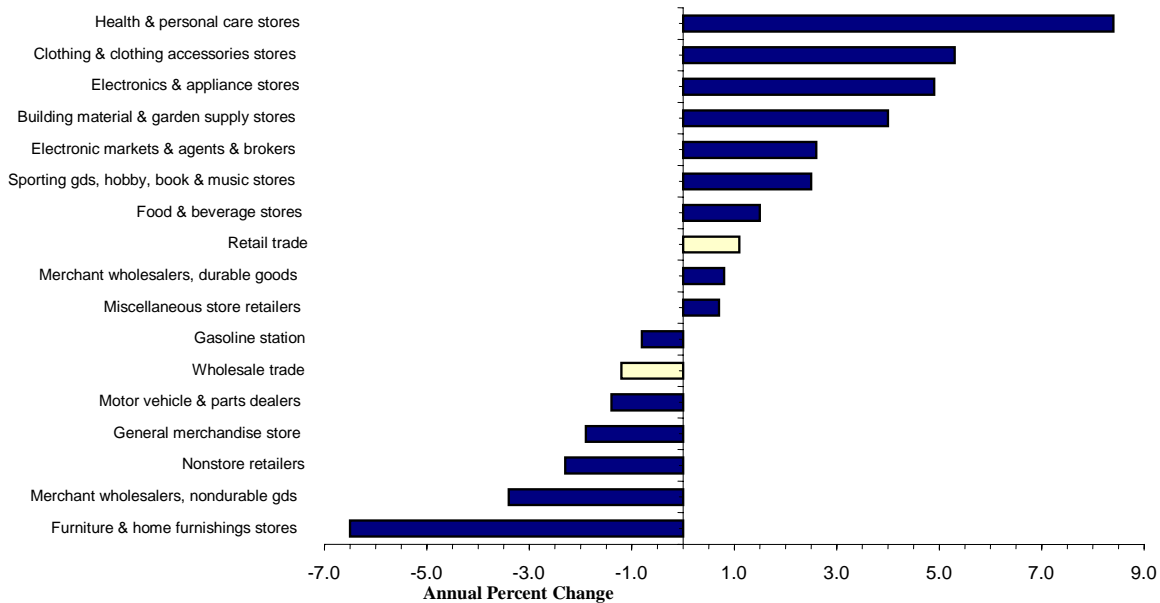


Table 5

Education & Health Services - Private
Annual Number and Percent Change

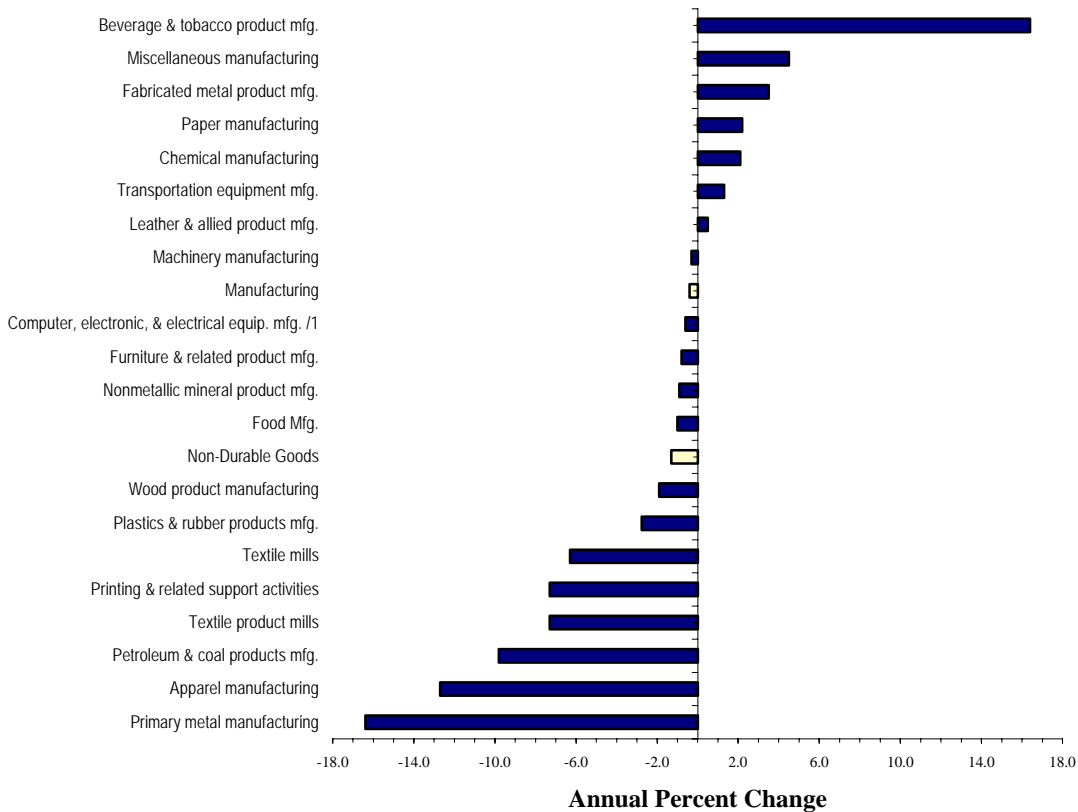
Industry Group	Establishments			Employment		
	2005	# change	% change	2005	# change	% change
Education & Health Services	2,205	51	2.4	50,793	1,105	2.2
Educational services	320	9	2.9	9,064	92	1.0
Health Care & Social Assistance	1,885	42	2.3	41,728	1,013	2.5
Ambulatory health care services	1,199	36	3.1	15,752	-44	-0.3
Hospitals	20	-1	-3.6	10,567	242	2.3
Nursing & residential care facilities	173	1	0.4	6,725	135	2.0
Social assistance /1	493	6	1.1	8,685	680	8.5

/1 Includes about 1,000 employees providing assistance to disabled persons that used to be classified in Other Services, Household Help.

Private Industry-Goods Producing

Goods producing jobs accounted for 56,717 jobs or 22.7% of private industry employment. The Goods producing super sector includes Natural Resources and Mining, Construction, and Manufacturing.

Manufacturing - Employment Growth Rate



Manufacturing accounted for 36,839 jobs or 14.7% of the private industry total. Overall manufacturing was down 138 jobs (-0.4%). Most of the overall losses are in non-durable goods, as durable goods remained unchanged from 2004. Printing & related support manufacturing lost the most jobs, down 136 (-7.3%). Fabricated metal increased by 99 jobs (3.5%) helping to slow the losses in total manufacturing.

Government

Government accounted for 51,149 jobs or 17.0% of Vermont’s total job count. Overall, government added 752 jobs (1.5%) through 2005. Federal government was down 168 jobs (-2.7%) over the year. State government increased employment by 292 (1.9%). Local government gained 628 jobs (2.2%).

Table 6

Government Employment Changes

2004-2005

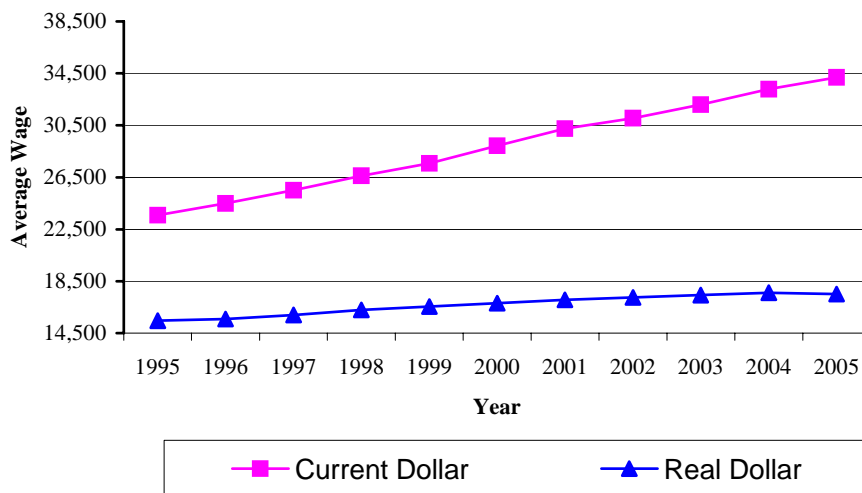
Industry Group	Establishments		Employment		Average Wage	
	2005	% chg	2005	% chg	2005	% chg
Government Ownership	1,765	-0.1	51,149	1.5	36,888	2.5
Federal government ownership	621	0.2	6,080	-2.7	53,995	5.3
Postal service	406	-0.7	2,110	-1.7	42,833	-3.2
Other federal	189	1.8	3,970	-3.2	59,926	9.1
State government ownership	316	-0.6	15,948	1.9	41,921	2.8
Educational services	29	0.0	5,991	3.6	39,432	2.4
Other state	287	-0.6	9,957	0.8	43,419	3.1
Local government ownership	828	-0.2	29,120	2.2	30,559	1.8
Educational services	276	0.0	21,210	1.8	31,081	2.1
Other local	552	-0.4	7,911	3.3	29,159	1.1

Wages

More than 10 billion dollars in wages was paid to workers in 2005, up 3.6 percent from 2004. The annual average wage increased to \$34,199 in 2005 up from \$33,276 in 2004. When adjusted for inflation (using the CPI_U index) the actual average wage decreased just over 0.5 percent in 2005. This is the first time in ten years that the real dollar lost ground. The current dollar amount continued its 10-year trend of consecutive increases.

Graph 5

Average Wage 1995 - 2005



Counties

Employment

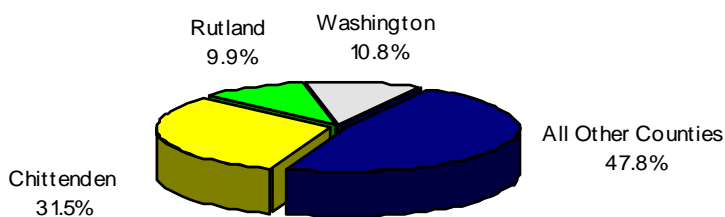
The bulk of jobs in Vermont were in Chittenden, Washington, and Rutland counties. These three counties made up 52.2 percent of all employment in the state. Chittenden with 31.5% of the State's job was the largest commercial, industrial, and educational center within Vermont. Washington County held the next largest share with 10.8% followed by Rutland County at 9.9%.

Chittenden County experienced a loss of 81 jobs (-0.1%) over the year. Some of the decrease can be attributed to more accurate reporting of firms with multiple locations. Washington and Rutland Counties continued to grow adding 349 jobs and 376 jobs respectively.

The remaining eleven counties accounted for 47.8% of employment in Vermont. Of these, Lamoille County contributed the most jobs to the state, up 384 over the year. Windham County lost 57 jobs in 2005. Windham was the only county besides Chittenden to see a decrease in jobs.

Graph 6

Annual Average Employment by County - 2005



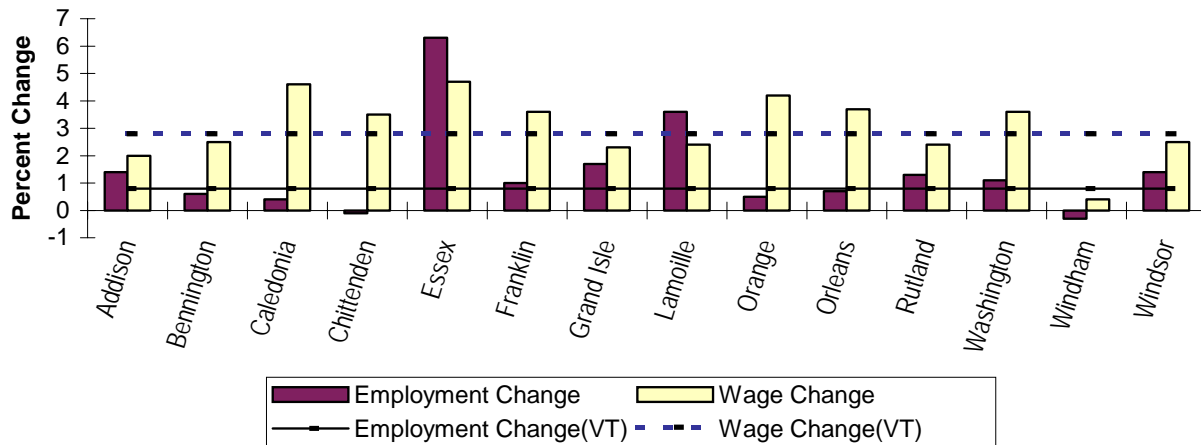
Wages

Chittenden County average wages continued to be the highest in the state at, \$39,766. Washington County had the second highest average wage at \$34,530. These two are the only counties to exceed the Vermont average annual wage of \$34,199. Grand Isle had the lowest annual average wage of \$24,846.

All counties showed an increase in the annual average wage over the year. The largest percent increase was in Essex County; which increased 4.7 percent or \$1,317. Chittenden County boasted the largest overall dollar increase of \$1,333 (3.5%). Observed county wage increases ranged from 0.4 % to 4.7%.

Graph 7

**Average Percentage Change for Employment and Wages
by State and County**



Establishments

Vermont averaged 24,533 business establishments in 2005. Chittenden County grew by 0.7 percent and accounted for 23.3 percent of all the establishments in the state. Four counties, Rutland, Washington, Windsor, and Chittenden Counties made up 53.5 percent of all establishments in Vermont. Only two counties Windsor and Franklin showed a decrease in establishments over the year of 1.2% and 0.1% respectively. Essex and Grand Isle accounted for the fewest establishments with just 405 combined.

County Annual Averages

County	Annual Average Establishments		Annual Average Employment		Total Annual Wages (\$)		Annual Average Wages (\$)	
	2005	Yr % Change	2005	Yr % Change	2005	Yr % Change	2005	Yr % Change
Vermont	24,533	0.8	300,941	0.8	10,291,859,464	3.6	34,199	2.8
Addison	1,324	0.9	14,071	1.4	456,633,774	3.4	32,453	2.0
Bennington	1,602	1.2	17,956	0.6	555,556,551	3.2	30,939	2.5
Caledonia	1,046	0.4	11,593	0.4	333,566,767	5.0	28,773	4.6
Chittenden	5,718	0.7	94,799	-0.1	3,769,750,905	3.4	39,766	3.5
Essex	175	2.9	1,596	6.3	46,515,987	11.3	29,141	4.7
Franklin	1,210	-0.1	15,691	1.0	510,976,101	4.7	32,566	3.6
Grand Isle	230	4.4	1,184	1.7	29,409,015	4.0	24,846	2.3
Lamoille	1,092	3.5	11,016	3.6	304,459,859	6.0	27,638	2.4
Orange	862	0.3	7,889	0.5	226,103,037	4.7	28,662	4.2
Orleans	973	3.6	9,919	0.7	273,900,221	4.4	27,613	3.7
Rutland	2,486	0.5	29,693	1.3	955,929,085	3.7	32,194	2.4
Washington	2,541	0.6	32,643	1.1	1,127,160,140	4.7	34,530	3.6
Windham	1,945	0.9	22,920	-0.3	757,747,811	0.2	33,060	0.4
Windsor	2,377	-1.2	23,942	1.4	771,892,772	4.0	32,240	2.5
Other /1	955	2.1	6,029	7.3	172,257,439	3.0	28,573	-4.1

1/ Location of business activity is statewide, countywide.

Towns

There are 255 towns in Vermont, of those forty-eight had employment between 1,000 and 9,999 and seven had employment of 10,000 or more. Ten towns had job increases of more than 100. Five towns experienced losses of 120 or more.

Towns of 10,000 or More

Employment

There were seven towns in Vermont with employment levels over 10,000. Combined these towns accounted for 36.2 percent of all employment in Vermont. Williston experienced the largest growth adding 397 jobs (3.7%). Five of the seven towns added jobs over the year. Essex and South Burlington lost jobs over the year, 338 and 202 respectively.

Wages

Wages increased in six of the seven towns. Brattleboro showed a 0.4 percent loss from 2004 down to \$34,189. The other six towns showed gains of between 1.6 and 4.0 percent. Burlington showed the largest increase with 4.0 percent over the year, Essex has the highest overall wages at \$53,191.

Table 8

Towns With Employment Levels Over 10,000

	Employment	% change from 2004	Wage (\$)	% change from 2004	Units	% change from 2004
Vermont	300,941	0.8	34,199	2.8	24,533	0.8
Burlington	32,498	-0.2	40,240	4.0	1,470	-0.3
South Burlington	17,856	1.1	36,560	2.8	1,053	1
Rutland City	13,452	0.4	34,676	1.6	982	-0.4
Essex	12,414	-2.6	53,191	3.3	642	1
Brattleboro	11,363	0.6	34,189	-0.4	751	-0.1
Williston	11,047	3.7	36,274	2.2	709	3.7
Bennington	10,431	1.3	31,236	2.2	650	0.7
Seven Town Total	109,062				6,257	
% of Vermont	36.2				25.5	

Towns with 1,000 to 9,999 Employed

Employment

Of the towns with employment, less than 10,000 but more than 1,000, Castleton had the largest job increase with 182 jobs added. Manchester felt the largest loss with 142 jobs. Over the year, Killington showed the largest percentage loss, down 6.4%, Castleton experienced the largest percentage gain up 13.4%.

Wages

Vernon felt a decrease 2.8 percent from 2004, yet still had Vermont's highest annual average wage of \$68,212. Colchester saw an increase of 6.3 percent to \$39,282. Waterbury saw an increase of 5.6 percent or \$39,140. The town with the lowest annual average wage was Dover \$21,208 followed by Cambridge with \$24,315. Killington showed the highest increase of 9.7 percent over the year driving its annual average wage to \$24,921.

Table 9

Highest and Lowest Wage
for Towns with Employment Levels of 1,000 or more
Ranked by Annual Average Wage

	Annual Average Employment		Annual Average Wage		% change 2004
	Employment	# change 2004	% change 2004	Wage (\$)	
Vermont	300,941	2,450	0.8	34,199	2.8
Top Ten Towns					
Vernon	1,046	0	0	68,212	-2.8
Essex	12,414	-338	-2.6	53,191	3.3
Burlington	32,498	-81	-0.2	40,240	4
Vergennes	2,166	82	3.9	39,529	0
Colchester	8,438	-131	-1.5	39,282	6.3
Waterbury	4,378	111	2.6	39,140	5.6
Montpelier	8,920	15	0.2	38,817	3.2
Hartford	6,135	146	2.4	38,167	2.2
Rutland Town	3,768	93	2.5	36,666	1
South Burlington	17,856	202	1.1	36,560	2.8
Lowest Ten Towns					
Dover	1,179	14	1.2	21,208	2.2
Cambridge	1,290	26	2	24,315	5.5
Wilmington	1,117	89	8.6	24,821	4.7
Killington	1,749	-120	-6.4	24,921	9.7
Ludlow	1,962	76	4.0	24,980	-3.7
Barton	1,414	23	1.6	25,301	3.5
Enosburg	1,076	-24	-2.2	25,515	-0.2
Bristol	1,378	57	4.3	25,657	1.3
Stowe	3,905	109	2.9	26,641	4.3
Brandon	1,556	57	3.8	27,488	1.7

Table 10

Towns with Job Gains of 100 or More in 2005 /1
for Towns with Employment Levels of 1,000 or more
Ranked by Absolute Change in Employment

	Annual Average Employment		Annual Average Wage		
	Employment	# change	% change	Wage (\$)	% change
		2004	2004		2004
Vermont	300,941	2450	0.8	34,199	2.8
Williston	11,047	397	3.7	36,274	2.2
South Burlington	17,856	202	1.1	36,560	2.8
Castleton	1,546	182	13.4	28,024	-0.1
Morristown	3,756	167	4.7	29,070	-0.2
Hartford	6,135	146	2.4	38,167	2.2
Bennington	10,431	132	1.3	31,236	2.2
St. Johnsbury	6,047	118	2.0	30,528	6.4
Waterbury	4,378	111	2.6	39,140	5.6
Stowe	3,905	109	2.9	26,641	4.3
St. Albans Town	1,536	105	7.3	29,525	-0.9

Table 11

Towns with Job Losses in 2005 /1
for Towns with Employment Levels of 1,000 or more
Ranked by Absolute Change in Employment

	Annual Average Employment		Annual Average Wage		
	Employment	# change	% change	Wage (\$)	% change
		2004	2004		2004
Vermont	300,941	2450	0.8	34,199	2.8
Essex	12,414	-338	-2.6	53,191	3.3
Manchester	4,276	-142	-3.2	31,078	5.4
Colchester	8,438	-131	-1.5	39,282	6.3
Newport City	4,266	-131	-3	28,647	4.1
Killington	1,749	-120	-6.4	24,921	9.7
Burlington	32,498	-81	-0.2	40,240	4.0
Rockingham	2,462	-72	-2.9	31,613	2.2
Winooski	2,557	-71	-2.7	34,389	3.8
Lyndon	2,877	-42	-1.4	28,371	1.3
St. Albans City	7,538	-28	-0.4	35,424	5.4
Enosburg	1,076	-24	-2.2	25,515	-0.2
Richmond	1,083	-23	-2.1	31,754	5.9
Putney	1,175	-15	-1.2	30,478	5.6

Of the 255 towns, 55 had employment of 1,000 or more.

/1 Changes may be influenced by administrative changes in employers' addresses from one town to another.

List of Tables

Page	Table
15	Table 1: Vermont NAICS Based Industry Groups, 2005 annual average establishments, employment, women, and average wage with percent changes from 2004
21	Table 2: Vermont County and Town, 2005, total covered annual average with change from 2004 establishments, employment, women, average wage
27	Table 3: Vermont County and NAICS Based Industry Groups, 2005 annual average establishments, employment, women, and average wage with percent changes from 2004
43	Table 4: Vermont Size Class by NAICS Based Industry Groups, 2005 private ownership first quarter establishments and annual average employment
45	Table 5: Vermont Size Class by County, 2005 private ownership first quarter establishments and annual average employment

Table 1

Vermont UI Covered Employment by NAICS Based Industry Groups

annual average with percent change from 2004 and 2000, establishments, employment, women, average wage

NAICS Major Industry Group	Establishments			Employment						Average Wage			
	2005	Pct change		2005	Total			2005	Women		2005	Pct change	
		From	Avg/4		From	Avg/4	From		Avg/4	From		Avg/4	
		2004	00-05		2004	00-05	2004		00-05	2004		00-05	
%	%	%	%	%	%	%	%	%	%	%			
Total Covered	24,533	0.8	0.6	300,941	0.8	0.3	148,415	1.4	0.9	34,199	2.8	3.4	
Private Ownership	22,768	0.9	0.6	249,792	0.7	0.1	120,703	1.3	0.9	33,648	2.8	3.2	
Goods Producing - Private	4,731	1.3	1.9	56,717	0.0	-2.6	13,637	1.1	-3.3	42,332	2.7	2.7	
Natural Resources and Mining	417	-2.9	1.7	3,010	-1.7	-0.9	755	-1.1	-2.4	27,460	2.8	2.5	
Sector 11, Agriculture, forestry, fishing & hunting	357	-2.3	2.6	2,315	0.6	1.0	680	1.0	-1.6	23,216	3.8	3.5	
111 Crop production	79	0.3	2.8	469	-2.2	-6.4	252	2.2	-6.4	18,064	9.5	2.4	
112 Animal production	151	-1.1	6.5	1,358	2.7	6.0	280	2.6	5.9	22,559	3.3	4.0	
113 Forestry & logging	n	n	n	n	n	n	n	n	n	n	n	n	
114 Fishing, hunting & trapping	n	n	n	n	n	n	n	n	n	n	n	n	
115 Agriculture & forestry support activities	60	0.0	2.4	335	3.1	-0.7	132	-5.2	-4.2	32,196	1.4	3.0	
Sector 21, Mining	60	-5.9	-3.0	695	-8.8	-5.8	75	-17.4	-8.0	41,590	4.5	3.3	
211 Oil & gas extraction	-	-	-	-	-	-	-	-	-	-	-	-	
212 Mining, except oil & gas	n	n	n	n	n	n	n	n	n	n	n	n	
213 Support activities for mining	n	n	n	n	n	n	n	n	n	n	n	n	
Construction	3,118	2.9	3.5	16,867	1.2	2.5	1,943	7.2	3.0	36,322	4.4	3.0	
Sector 23, Construction	3,118	2.9	3.5	16,867	1.2	2.5	1,943	7.2	3.0	36,322	4.4	3.0	
236 Construction of buildings	1,066	3.5	3.7	5,081	-0.6	3.8	585	7.5	4.2	36,493	4.7	3.4	
237 Heavy & civil engineering construction	171	-2.1	-0.5	1,881	1.5	-2.3	271	9.2	-0.9	44,540	2.9	3.9	
238 Specialty trade contractors	1,881	3.0	3.8	9,905	2.0	2.8	1,087	6.5	3.5	34,674	4.7	2.7	
Manufacturing	1,196	-1.0	-1.5	36,840	-0.4	-4.6	10,939	0.2	-4.2	46,298	2.1	3.1	
Durable Goods	779	-1.3	-1.3	26,422	0.0	-4.9	7,152	-0.5	-4.5	49,807	1.7	3.4	
321 Wood product manufacturing	123	-3.0	-1.7	2,429	-1.9	-4.2	492	-3.2	-4.0	32,772	2.2	1.9	
327 Nonmetallic mineral product mfg.	151	-1.1	0.1	2,033	-0.9	-0.8	390	-5.5	-0.4	40,438	1.3	3.2	
331 Primary metal manufacturing	9	12.5	-3.9	336	-16.4	-11.1	68	-19.3	-12.0	43,137	0.8	4.5	
332 Fabricated metal product mfg.	110	3.1	0.9	2,933	3.5	-1.2	611	10.7	-1.6	47,018	0.8	3.6	
333 Machinery manufacturing	87	-8.7	-4.4	3,016	-0.3	-7.0	607	-0.2	-5.4	45,599	-2.5	2.2	
334-335 Computer, electronic, & electrical equip. mfg. /1	76	-1.6	-2.3	9,153	-0.6	-6.1	2,842	-3.2	-6.6	63,917	2.8	3.9	
336 Transportation equipment mfg.	25	-3.8	-2.7	2,421	1.3	-4.7	580	2.3	-3.2	54,808	0.2	4.3	
337 Furniture & related product mfg.	94	-0.3	-1.5	2,097	-0.8	-8.6	576	1.7	-7.0	30,989	3.0	3.8	
339 Miscellaneous manufacturing	106	1.7	-0.7	2,004	4.5	0.7	987	3.5	1.4	40,691	4.2	3.0	
Non-Durable Goods	417	-0.4	-1.7	10,418	-1.3	-3.9	3,787	1.5	-3.7	37,399	3.0	2.2	
311 Food Mfg.	141	2.4	-0.9	3,801	-1.0	-1.4	1,333	-1.9	-0.2	34,949	4.0	0.9	
312 Beverage & tobacco product mfg.	19	-3.9	3.6	374	16.4	8.9	103	21.6	9.5	34,163	5.0	4.8	
313 Textile mills	14	-1.7	-1.7	176	-6.3	-9.9	93	-6.3	-4.1	27,241	-0.5	-0.7	
314 Textile product mills	22	-4.3	-6.6	135	-7.3	-14.0	75	-12.1	-16.5	26,822	-0.6	4.7	
315 Apparel manufacturing	27	1.9	-1.4	444	-12.7	-8.8	362	-10.5	-8.1	26,503	2.8	5.7	
316 Leather & allied product mfg.	n	n	n	n	n	n	n	n	n	n	n	n	
322 Paper manufacturing	16	-14.5	-10.5	1,358	2.2	-6.9	333	34.1	-6.6	48,067	5.1	4.4	
323 Printing & related support activities	104	1.5	-1.7	1,725	-7.3	-6.0	597	-2.2	-4.6	39,415	2.1	2.7	
324 Petroleum & coal products mfg.	n	n	n	n	n	n	n	n	n	n	n	n	
325 Chemical manufacturing	36	-2.0	1.9	1,395	2.1	-2.3	523	10.4	-2.5	37,875	-0.6	0.9	
326 Plastics & rubber products mfg.	26	-1.9	-1.8	906	1.0	-4.1	311	1.0	-5.8	37,247	0.2	2.7	

Table 1 (Continued)

Vermont UI Covered Employment by NAICS Based Industry Groups

annual average with percent change from 2004 and 2000, establishments, employment, women, average wage

NAICS Major Industry Group	Establishments			Employment						Average Wage		
	2005	Pct change		2005	Total		2005	Women		2005	Pct change	
		From	Avg/4		From	Avg/4		From	Avg/4			
		2004	00-05		2004	00-05		2004	00-05			
	%	%		%	%		%	%		%	%	
Service Providing - Private	18,037	0.8	0.2	193,075	0.9	0.9	107,066	1.3	1.5	31,098	3.0	3.9
Trade, Transportation, and Utilities	5,606	-0.1	-0.3	59,167	0.8	0.4	24,884	0.7	0.5	30,223	1.6	3.5
Sector 42, Wholesale trade	1,342	0.4	2.0	10,072	-1.2	0.3	2,848	2.3	0.7	45,926	2.8	3.7
423 Merchant wholesalers, durable goods	823	1.9	2.0	5,085	0.8	0.6	1,331	3.9	0.6	46,341	3.3	4.0
424 Merchant wholesalers, nondurable gds	446	-1.3	1.3	4,822	-3.4	-0.4	1,468	1.1	0.4	45,290	2.1	3.4
425 Electronic markets & agents & brokers	73	-5.8	6.4	165	2.6	14.3	49	-4.4	22.7	51,688	5.8	0.5
Sector 44-45, Retail trade	3,654	-0.4	-0.9	40,464	1.1	0.4	19,681	0.2	0.3	23,746	1.3	3.7
441 Motor vehicle & parts dealers	409	-0.3	-0.4	4,962	-1.4	0.9	788	1.5	1.1	36,826	1.0	3.5
442 Furniture & home furnishings stores	195	-1.3	1.8	1,261	-6.5	2.7	659	-5.7	3.8	27,766	1.4	3.2
443 Electronics & appliance stores	113	1.3	-3.7	880	4.9	-0.1	235	12.5	-0.5	28,835	7.4	-0.2
444 Building material & garden supply stores	324	1.7	-0.2	3,870	4.0	4.4	1,155	4.0	7.4	29,404	2.3	2.8
445 Food & beverage stores	478	1.2	-2.2	9,474	1.5	-0.6	5,116	-1.5	-0.7	18,167	2.3	3.2
446 Health & personal care stores	170	0.6	-1.5	2,212	8.4	3.4	1,418	10.0	3.7	30,262	-1.2	4.4
447 Gasoline station	483	-1.1	0.2	3,864	-0.8	1.2	2,161	-0.2	2.0	16,343	2.6	3.1
448 Clothing & clothing accessories stores	329	2.3	-2.0	3,041	5.3	1.0	2,223	2.9	1.8	16,705	-0.6	2.5
451 Sporting gds, hobby, book & music stores	283	-1.9	-1.0	2,211	2.5	0.5	1,127	3.4	2.5	17,203	0.6	2.6
452 General merchandise store	139	-4.8	-0.7	2,883	-1.9	-4.5	1,951	-1.1	-5.5	18,401	4.0	4.6
453 Miscellaneous store retailers	487	-2.5	-1.6	3,177	0.7	0.3	1,942	-3.0	0.1	20,068	4.3	4.2
454 Nonstore retailers	245	-0.7	0.9	2,629	-2.3	-0.7	907	-6.6	-3.6	36,560	-1.9	4.9
Sector 48-49, Transportation & warehousing	562	1.4	-1.1	6,927	2.5	0.4	1,953	4.0	2.6	32,778	2.1	1.4
481 Air transportation	16	-1.6	10.3	297	4.5	5.9	99	8.5	5.4	34,414	0.8	-0.3
482 Rail transportation /2	-	-	-	-	-	-	-	-	-	-	-	-
483 Water transportation	n	n	n	n	n	n	n	n	n	n	n	n
484 Truck transportation	350	2.8	-0.6	2,559	-1.3	-1.5	278	-5.4	-1.9	39,045	3.7	3.9
485 Transit & grnd passenger transport	67	-2.2	-3.4	1,331	2.3	1.1	475	4.5	0.3	18,242	1.8	2.4
486 Pipeline transportation	-	-	n	-	-	n	-	-	n	-	-	n
487 Scenic & sightseeing transportation	8	0.0	-4.4	63	-13.3	0.2	30	-32.8	-4.8	26,675	8.1	0.1
488 Support activities for transportation	57	-3.4	3.2	458	-6.8	0.9	193	0.8	3.8	39,257	0.4	7.1
491 Postal service	n	n	-	n	n	-	n	n	-	n	n	-
492 Couriers & messengers	34	0.0	-5.5	1,160	1.0	-0.4	277	-5.1	-1.9	33,734	3.2	2.6
493 Warehousing & storage	25	7.4	-6.8	947	25.2	5.5	570	18.9	11.8	31,107	-0.3	-9.5
Sector 22, Utilities	48	-3.0	-2.9	1,703	-0.6	0.1	404	0.8	1.0	80,832	2.7	5.8
221 Utilities	48	-3.0	-2.9	1,703	-0.6	0.1	404	0.8	1.0	80,832	2.7	5.8
Information	504	-2.3	1.0	6,232	-2.0	-1.9	3,098	-3.3	-1.3	39,590	1.8	3.6
Sector 51, Information	504	-2.3	1.0	6,232	-2.0	-1.9	3,098	-3.3	-1.3	39,590	1.8	3.6
511 Publishing industries, except Internet	179	-4.5	1.9	2,319	-2.4	-3.0	1,112	-5.3	-4.5	36,112	4.8	4.4
512 Motion picture & sound recording inds	75	-2.9	-2.1	394	-2.4	-5.9	197	-6.1	-3.1	16,367	-9.8	-2.6
515 Broadcasting, except Internet	43	-1.2	-0.5	717	-0.8	-1.8	265	5.8	1.1	35,705	2.0	3.6
516 Internet publishing & broadcasting	n	n	n	n	n	n	n	n	n	n	n	n
517 Telecommunications	114	-5.8	2.4	1,503	-2.3	-3.6	619	-5.0	-2.7	59,376	-1.2	3.7
518 ISPs, search portals, & data processing	45	-1.1	-2.7	817	-5.7	0.7	581	-5.2	1.4	35,298	7.0	4.6
519 Other information services	n	n	n	n	n	n	n	n	n	n	n	n

See footnotes at end of table.

Table 1: Continued

Vermont UI Covered Employment by NAICS Based Industry Groups

annual average with percent change from 2004 and 2000, establishments, employment, women, average wage

NAICS Major Industry Group	Establishments			Employment						Average Wage			
	2005	Pct change		2005	Total			Women			2005	Pct change	
		From	Avg/4		From	Avg/4	From	Avg/4	From	Avg/4			
		2004	00-05		2004	00-05	2004	00-05	2004	00-05			
	%	%		%	%		%	%		%	%		
Financial Activities	1,715	1.4	1.6	12,914	-0.7	0.4	8,165	-0.8	0.5	48,255	4.6	5.0	
Sector 52, Finance and Insurance	958	0.8	1.3	9,650	-1.0	0.1	6,707	-0.5	0.2	54,582	5.3	5.2	
521 Monetary authorities - central bank	n	n	-	n	n	-	n	n	-	n	n	-	
522 Credit intermediation & related activities	421	1.4	2.4	5,069	-0.8	1.2	3,803	0.0	1.1	44,947	4.1	5.2	
523 Securities, commodity cntrcts, invstmnts	137	6.6	4.6	799	2.8	0.4	368	7.0	-0.6	111,776	4.7	3.9	
524 Insurance carriers & related activities	385	-2.0	-1.0	3,719	-2.3	-1.3	2,496	-2.3	-0.9	55,376	6.2	5.8	
525 Funds, trusts, & other financial vehicles	n	n	n	n	n	n	n	n	n	n	n	n	
Sector 53, Real estate & rental & leasing	757	2.1	1.9	3,263	0.3	1.4	1,458	-2.2	2.1	29,547	1.4	4.8	
531 Real estate	575	3.2	3.0	2,015	0.4	3.0	1,029	-1.2	3.9	33,190	-1.1	5.1	
532 Rental & leasing services	n	n	n	n	n	n	n	n	n	n	n	n	
533 Lessors of nonfinancial intangible assets	n	n	n	n	n	n	n	n	n	n	n	n	
Professional and Business Services	3,755	3.3	2.5	21,846	2.7	0.9	9,601	1.9	0.9	41,670	3.7	4.5	
Sector 54, Professional, scientific, & technical svcs	2,602	4.0	2.6	12,797	1.6	0.8	6,312	0.9	1.7	52,299	6.7	4.5	
541 Professional, scientific & technical services	2,602	4.0	2.6	12,797	1.6	0.8	6,312	0.9	1.7	52,299	6.7	4.5	
Sector 55, Mgt. of companies & enterprises	22	-4.3	-3.6	308	0.5	0.5	133	-4.3	-1.5	63,025	8.9	7.9	
551 Mgt of companies & enterprises	22	-4.3	-3.6	308	0.5	0.5	133	-4.3	-1.5	63,025	8.9	7.9	
Sector 56, Administrative & waste services	1,131	1.9	2.4	8,741	4.4	1.1	3,156	4.3	-0.6	25,359	-3.7	4.6	
561 Administrative & support services	1,029	1.8	2.4	7,701	4.3	0.7	2,990	4.4	-0.8	23,108	-3.2	4.2	
562 Waste mgt & remediation services	101	3.3	1.8	1,040	4.7	5.3	166	1.5	5.1	42,021	-5.9	4.3	
Education & Health Services	2,205	2.4	2.0	50,793	2.2	3.5	38,531	2.9	3.8	32,925	3.8	3.2	
Sector 61, Educational services	320	2.9	4.2	9,064	1.0	1.0	5,262	1.7	1.4	34,779	4.1	4.3	
611 Educational services	320	2.9	4.2	9,064	1.0	1.0	5,262	1.7	1.4	34,779	4.1	4.3	
Sector 62, Health care & social assistance	1,885	2.3	1.6	41,728	2.5	4.1	33,268	3.1	4.2	32,523	3.8	3.0	
621 Ambulatory health care services	1,199	3.1	2.1	15,752	-0.3	2.9	12,253	-0.8	2.9	38,150	4.6	4.1	
622 Hospitals	20	-3.6	0.0	10,567	2.3	1.8	8,471	5.9	2.1	42,491	6.8	4.5	
623 Nursing & residential care facilities	173	0.4	0.8	6,725	2.0	1.8	5,501	2.6	1.5	23,849	2.2	3.8	
624 Social assistance	493	1.1	0.9	8,685	8.5	13.0	7,044	7.3	13.9	16,905	0.4	-0.4	
Leisure and Hospitality	2,225	0.1	1.0	33,064	0.1	0.0	18,038	1.2	0.6	16,262	1.8	3.3	
Sector 71, Arts, entertainment, & recreation	408	4.6	3.4	3,868	4.0	3.2	1,962	6.5	4.6	18,224	-1.0	1.4	
711 Performing arts & spectator sports	115	5.5	2.6	723	14.8	5.1	308	15.1	6.2	26,948	-16.9	-4.8	
712 Museums, historical sites, zoos, & parks	30	2.6	10.4	413	-1.0	2.6	242	0.0	2.2	23,711	4.0	4.2	
713 Amusements, gambling, & recreation	264	4.5	3.1	2,731	2.3	2.8	1,412	5.9	4.7	15,085	4.6	3.8	
Sector 72, Accommodation & food services	1,817	-0.9	0.5	29,196	-0.4	-0.3	16,076	0.6	0.2	16,002	2.1	3.5	
721 Accommodation	490	-3.7	-1.2	10,796	-1.8	-1.7	6,137	-1.6	-1.3	20,389	3.0	3.7	
722 Food services & drinking places	1,327	0.2	1.2	18,400	0.4	0.5	9,940	2.0	1.2	13,428	1.8	3.7	
Other Services	2,028	-2.0	-5.2	9,059	-2.6	-2.0	4,750	-1.6	-2.1	24,912	1.6	3.9	
Sector 81, Other services, except public admin.	2,028	-2.0	-5.2	9,059	-2.6	-2.0	4,750	-1.6	-2.1	24,912	1.6	3.9	
811 Repair & maintenance	687	-0.8	0.2	2,768	-1.4	-1.1	440	1.9	-0.1	33,083	0.0	1.7	
812 Personal & laundry services	420	-1.3	-0.5	2,177	-1.1	0.0	1,574	0.1	0.7	18,254	-0.1	1.5	
813 Membership associations & orgs	454	0.0	1.6	3,228	-3.2	1.5	2,001	-1.7	2.5	24,199	3.8	5.1	
814 Private households	467	-6.2	-16.0	886	-7.1	-14.2	736	-6.5	-13.8	18,348	2.4	8.5	

Table 1: Continued

Vermont UI Covered Employment by NAICS Based Industry Groups

annual average with percent change from 2004 and 2000, establishments, employment, women, average wage

NAICS Major Industry Group	Establishments			Employment						Average Wage		
	2005	Pct change		2005	Total		Women		2005	Wage		
		From	Avg/4		From	Avg/4	From	Avg/4		From	Avg/4	
		2004	00-05		2004	00-05	2004	00-05		2004	00-05	
	%	%		%	%		%	%		%	%	
Government Ownership	1,765	-0.1	1.0	51,149	1.5	1.6	27,712	1.8	1.2	36,888	2.5	4.2
Federal Government Ownership /3	621	0.2	0.6	6,080	-2.7	0.1	-	-	-	53,995	5.3	5.8
Service Providing - Federal Govt.	621	0.2	0.6	6,080	-2.7	0.1	-	-	-	53,995	5.3	5.8
Trade, Transportation and Utilities	408	-0.7	0.5	2,170	-1.9	-2.8	-	-	-	44,283	-2.9	3.3
Sectors 48-49, Transportation & Warehousing	408	-0.7	0.5	2,170	-1.9	-2.8	-	-	-	44,283	-2.9	3.3
488 Support activities for transportation	1	0.0	0.0	56	-7.0	-8.9	-	-	-	96,525	5.5	6.8
491 Postal service	406	-0.7	0.4	2,110	-1.7	-2.7	-	-	-	42,833	-3.2	3.2
Financial Activities	5	0.0	0.0	41	7.0	0.4	-	-	-	61,993	4.8	5.1
Sector 52, Finance and Insurance	5	0.0	0.0	41	7.0	0.4	-	-	-	61,993	4.8	5.1
522 Credit intermediation and related activities	5	0.0	0.0	41	7.0	0.4	-	-	-	61,993	4.8	5.1
Professional and Business Services	5	0.0	-11.1	47	-2.8	2.2	-	-	-	67,109	10.2	5.9
Sector 54, Prof., Scientific, and Technical Svcs.	5	0.0	-11.1	47	-2.8	2.2	-	-	-	67,109	10.2	5.9
541 Professional, scientific, and technical services	5	0.0	-11.1	47	-2.8	2.2	-	-	-	67,109	10.2	5.9
Education and Health Services	1	0.0	0.0	745	1.7	1.9	-	-	-	60,438	0.5	5.2
Sector 62, Health Care and Social Assistance	1	0.0	0.0	745	1.7	1.9	-	-	-	60,438	0.5	5.2
622 Hospitals	1	0.0	0.0	745	1.7	1.9	-	-	-	60,438	0.5	5.2
Public Administration	202	1.9	1.4	3,078	-4.3	1.9	-	-	-	58,978	11.4	7.2
Sector 92, Public Administration	202	1.9	1.4	3,078	-4.3	1.9	-	-	-	58,978	11.4	7.2
921 Executive, legislative and general government	10	8.3	-7.0	93	-4.6	-17.6	-	-	-	58,267	6.4	1.5
922 Justice, public order, and safety activities	54	0.0	13.6	1,013	-6.4	43.8	-	-	-	68,450	13.8	2.2
923 Administration of human resource programs	4	0.0	0.0	64	2.0	-1.1	-	-	-	57,647	3.2	4.0
924 Administration of environmental programs	36	0.0	2.1	347	-2.2	1.9	-	-	-	49,323	7.9	4.8
925 Community and housing program administration	1	0.0	0.0	5	-8.3	-1.7	-	-	-	92,655	9.4	9.7
926 Administration of economic programs	82	3.8	1.5	238	-1.6	-14.3	-	-	-	44,254	-1.9	13.7
928 National security and international affairs	15	0.0	-14.1	1,318	-4.0	-2.4	-	-	-	56,895	13.6	5.3
State government ownership	316	-0.6	4.4	15,948	1.9	1.7	7,972	0.6	0.4	41,921	2.8	4.7
Goods Producing - State Govt.	21	-4.5	5.6	623	1.3	2.9	65	2.0	-3.4	43,080	2.6	4.9
Construction	21	-4.5	5.6	623	1.3	2.9	65	2.0	-3.4	43,080	2.6	4.9
Sector 23, Construction	21	-4.5	5.6	623	1.3	2.9	65	2.0	-3.4	43,080	2.6	4.9
237 Heavy and civil engineering construction	21	-4.5	5.6	623	1.3	2.9	65	2.0	-3.4	43,080	2.6	4.9
Service Providing - State Govt.	295	-0.3	4.4	15,325	1.9	1.6	7,908	0.6	0.4	41,874	2.8	4.7
Information	3	-18.8	-4.1	34	1.2	-3.2	23	-7.2	-3.9	43,582	2.7	5.0
Sector 51, Information	3	-18.8	-4.1	34	1.2	-3.2	23	-7.2	-3.9	43,582	2.7	5.0
519 Other information Services	3	-18.8	-4.1	34	1.2	-3.2	23	-7.2	-3.9	43,582	2.7	5.0
Financial Activities	1	0.0	-12.9	41	-1.8	0.2	27	-8.6	-0.2	48,478	7.3	4.7
Sector 52, Finance and Insurance	1	0.0	-12.9	41	-1.8	0.2	27	-8.6	-0.2	48,478	7.3	4.7
522 Credit intermediation and related activities	1	0.0	0.0	41	-1.8	0.7	27	-8.6	-0.2	48,478	7.3	5.2
Professional and Business Services	25	0.0	8.0	603	0.7	1.7	202	-0.9	-0.7	43,510	3.3	5.2
Sector 56, Administrative & waste services	25	0.0	8.0	603	0.7	1.7	202	-0.9	-0.7	43,510	3.3	5.2
561 Administrative and support services	25	0.0	8.0	603	0.7	1.7	202	-0.9	-0.7	43,510	3.3	5.2

See footnotes at end of table.

Table 1: Continued

Vermont UI Covered Employment by NAICS Based Industry Groups

annual average with percent change from 2004 and 2000, establishments, employment, women, average wage

NAICS Major Industry Group	Establishments			Employment						Average Wage		
	2005	Pct change		2005	Total		2005	Women		2005	Pct change	
		From	Avg/4		From	Avg/4		From	Avg/4			
		2004	00-05		2004	00-05		2004	00-05			
	%	%		%	%		%	%		%	%	
Education and Health Services	69	0.0	0.1	7,734	2.9	2.2	4,364	1.3	0.7	40,331	2.5	4.6
Sector 61, Educational Services	29	0.0	-1.0	5,991	3.6	1.5	3,353	2.2	0.7	39,432	2.4	4.4
611 Educational services	29	0.0	-1.0	5,991	3.6	1.5	3,353	2.2	0.7	39,432	2.4	4.4
Sector 62, Health Care and Social Assistance	40	0.0	1.0	1,742	0.6	4.6	1,011	-1.6	0.6	43,423	3.2	4.9
622 Hospitals	1	0.0	0.0	229	0.5	2.2	131	-3.8	2.2	43,704	3.4	5.1
623 Nursing and residential care facilities	1	0.0	0.0	218	0.9	-1.4	182	0.1	-0.1	42,903	2.7	4.7
624 Social assistance	38	0.0	1.1	1,295	0.6	6.4	697	-1.6	0.5	43,461	3.3	4.8
Public Administration	197	0.0	6.0	6,913	0.9	1.1	3,293	-0.1	0.2	43,410	3.1	4.9
Sector 92, Public Administration	197	0.0	6.0	6,913	0.9	1.1	3,293	-0.1	0.2	43,410	3.1	4.9
921 Executive, legislative and general government	22	0.0	11.1	546	0.9	2.7	310	-0.9	-0.7	42,823	3.1	4.6
922 Justice, public order, and safety activities	105	0.0	10.4	2,436	0.9	0.8	832	0.0	-0.6	43,297	3.0	4.9
923 Administration of human resource programs	21	0.0	-0.9	1,704	0.6	2.2	1,263	-0.1	2.7	43,670	2.9	4.9
924 Administration of environmental programs	27	0.0	0.8	749	0.9	0.9	236	1.4	-3.3	43,195	3.2	4.8
925 Community and housing program administration	3	0.0	0.0	223	0.9	-5.1	126	0.0	-6.3	39,937	2.9	3.9
926 Administration of economic programs	13	0.0	0.0	1,130	1.0	0.9	469	-0.7	0.2	44,431	3.4	5.3
928 National security and international affairs	6	0.0	0.0	125	1.8	2.8	58	-0.9	0.8	42,847	2.2	4.6
Local government ownership	828	-0.2	0.2	29,120	2.2	1.8	19,740	2.3	1.5	30,559	1.8	3.3
Goods Producing - Local Govt.	31	0.0	0.7	593	1.7	1.9	57	6.6	0.6	35,090	5.4	3.2
Construction	31	0.0	0.7	593	1.7	1.9	57	6.6	0.6	35,090	5.4	3.2
Sector 23, Construction	31	0.0	0.7	593	1.7	1.9	57	6.6	0.6	35,090	5.4	3.2
237 Heavy and civil engineering construction	31	0.0	0.7	593	1.7	1.9	57	6.6	0.6	35,090	5.4	3.2
Service Providing - Local Govt.	797	-0.2	0.2	28,528	2.2	1.8	19,684	2.3	1.5	30,465	1.7	3.3
Trade, Transportation and Utilities	55	0.0	1.4	649	-0.1	2.7	127	8.8	4.0	40,793	2.8	2.7
Sectors 48-49, Transportation & Warehousing	5	0.0	0.0	230	-0.4	6.4	60	9.1	10.5	32,005	3.0	4.1
485 Transit and ground passenger transportation	3	0.0	0.0	195	-0.4	7.0	55	10.0	10.4	30,245	3.1	3.9
488 Support activities for transportation	2	0.0	0.0	36	-0.5	3.1	5	0.0	10.8	41,653	2.9	5.9
Sector 22, Utilities	50	0.0	1.6	419	0.1	1.0	67	8.5	-0.3	45,623	2.6	2.8
221 Utilities	50	0.0	1.6	419	0.1	1.0	67	8.5	-0.3	45,623	2.6	2.8
Information	12	0.0	0.0	121	1.3	2.8	95	1.6	1.5	18,263	3.5	5.2
Sector 51, Information	12	0.0	0.0	121	1.3	2.8	95	1.6	1.5	18,263	3.5	5.2
519 Other Information Services	12	0.0	0.0	121	1.3	2.8	95	1.6	1.5	18,263	3.5	5.2
Professional and Business Services	11	-8.3	-1.7	28	-24.7	-5.2	1	-75.0	-22.6	27,280	-11.1	3.7
Sector 54, Prof., Scientific, & Technical Svcs.	1	-50.0	-12.9	3	-75.8	-25.0	0	-100.0	-100.0	49,742	16.2	10.5
541 Professional and technical services	1	-50.0	-12.9	3	-75.8	-25.0	0	-100.0	-100.0	49,742	16.2	10.5
Sector 56, Administrative & Waste Services	10	0.0	0.0	25	-3.2	0.0	1	-37.5	4.6	24,915	-2.6	5.0
561 Administrative and support services	10	0.0	0.0	25	-3.2	0.0	1	-37.5	4.6	24,915	-2.6	5.0
Education and Health Services	280	0.7	0.1	21,247	1.8	1.6	16,726	2.3	1.4	31,086	2.1	3.2
Sector 61, Educational Services	276	0.2	0.0	21,210	1.8	1.6	16,716	2.2	1.4	31,081	2.1	3.2
611 Educational services	276	0.2	0.0	21,210	1.8	1.6	16,716	2.2	1.4	31,081	2.1	3.2
Sector 62, Health Care and Social Assistance	4	60.0	14.9	37	30.9	4.1	10	60.0	18.7	33,940	-0.9	11.8
621 Ambulatory health care services	3	20.0	8.4	30	4.1	-0.6	7	16.0	11.3	35,710	4.3	13.0
624 Social assistance	1	-	-	8	-	-	3	-	-	27,070	-	-

See footnotes at end of table.

Table 1: Continued

Vermont UI Covered Employment by NAICS Based Industry Groups

annual average with percent change from 2004 and 2000, establishments, employment, women, average wage

NAICS Major Industry Group	Establishments			Employment						Average Wage		
	2005	Pct change		2005	Total		2005	Women		2005	Pct change	
		From	Avg/4		From	Avg/4		From	Avg/4			
		2004	00-05		2004	00-05		2004	00-05			
	%	%		%	%		%	%		%	%	
Leisure and Hospitality	15	0.0	0.0	351	57.3	5.9	109	51.7	-0.1	14,121	-35.9	-1.4
Sector 71, Arts, Entertainment, and Recreation	15	0.0	0.0	351	57.3	5.9	109	51.7	-0.1	14,121	-35.9	-1.4
713 Amusements, gambling, and recreation	15	0.0	0.0	351	57.3	5.9	109	51.7	-0.1	14,121	-35.9	-1.4
Other Services	5	0.0	10.8	13	1.9	9.8	3	33.3	0.0	31,945	5.5	2.0
Sector 81, Other Services, except Public Admin.	5	0.0	10.8	13	1.9	9.8	3	33.3	0.0	31,945	5.5	2.0
811 Repair and maintenance	1	0.0	0.0	2	4.0	-3.5	0	0.0	0.0	51,954	-3.2	7.3
812 Personal and laundry services	3	0.0	8.4	8	-9.4	7.1	0	-100.0	0.0	26,963	9.7	1.1
813 Membership associations and organizations	1	0.0	-	3	50.0	-	3	50.0	-	30,778	-1.2	-
Public Administration	419	-0.7	0.0	6,118	1.9	2.1	2,622	1.3	2.6	28,402	2.7	4.2
Sector 92, Public Administration	419	-0.7	0.0	6,118	1.9	2.1	2,622	1.3	2.6	28,402	2.7	4.2
921 Executive, legislative and general government	281	-0.7	-0.2	3,199	1.3	1.1	1,312	-0.5	1.1	24,295	3.7	4.1
922 Justice, public order, and safety activities	65	-3.0	0.3	1,413	-1.0	1.0	251	-2.3	-1.1	37,075	3.4	4.8
923 Administration of human resource programs	28	-1.8	0.4	1,071	6.6	7.2	869	4.0	6.4	28,264	-0.1	3.0
924 Administration of environmental programs	23	3.4	0.7	170	5.6	0.7	65	12.2	1.7	25,755	1.9	5.7
925 Community and housing program administration	22	4.8	0.9	264	6.2	4.5	126	5.0	4.2	33,968	2.6	3.7
926 Administration of economic programs	1	0.0	0.0	2	-25.0	-11.4	0	0.0	0.0	31,645	15.4	21.1
Sector 61. Educational Svcs - total, private and govt	625	1.5	2.0	36,265	1.9	1.4	25,331	2.1	1.3	33,385	2.7	3.7

/1 In order to insure anonymity of U.I. Firms, it is sometimes necessary to combine certain NAICS industries.

/2 Railroad employees are covered by unemployment programs under the Railroad Retirement Act and thus not included in this publication.

/3 Female employment is not collected by Federal government.

/4 Avg is compounded annual average percent change.

n = Data is confidential.

- = There is no data to report.

NOTE: Changes may be influenced by reclassification of specific firms and or improved multiple worksite information.

NOTE: detail may not add to totals due to rounding.

Table 2:

Vermont County and Town, 2005, Total Covered

annual average with percent change from 2004 and 2000, establishments, employment, women, average wage

County / Town	Establishments			Employment						Average Wage		
	2005	Pct change		2005	Pct change		2005	Pct change		2005	Pct change	
		From 2004	Avg/4 00-05		From 2004	Avg/4 00-05		From 2004	Avg/4 00-05		From 2004	Avg/4 00-05
		%	%		%	%		%	%		%	%
Vermont	24,533	0.8	0.6	300,941	0.8	0.3	148,415	1.4	0.9	34,199	2.8	3.4
01. Addison	1,324	0.9	1.3	14,071	1.4	0.5	7,209	2.6	0.6	32,453	2.0	3.7
Addison	33	-0.8	1.6	224	1.4	0.4	95	4.1	-1.0	24,702	1.8	6.9
Bridport	33	-3.7	2.3	173	-2.4	-2.4	64	-4.1	-5.1	27,068	7.4	6.6
Bristol	136	1.1	1.0	1,378	4.3	3.1	789	4.4	4.5	25,657	1.3	2.5
Cornwall	32	-8.7	12.2	112	-7.8	4.0	56	-	2.0	40,948	14.2	9.7
Ferrisburgh	77	-1.3	2.1	450	4.0	3.3	169	8.2	2.2	26,578	0.3	3.7
Goshen	5	-20.8	-1.0	16	-8.5	-9.5	7	-33.3	-16.5	22,052	48.4	14.0
Granville	14	-8.2	7.0	75	-1.2	9.4	32	16.7	3.3	23,949	26.8	4.3
Hancock	18	-4.0	-4.8	112	-10.4	-10.5	41	-19.4	-12.4	20,912	13.8	1.0
Leicester	23	4.5	7.2	81	5.1	7.1	26	4.0	-1.1	26,122	3.5	7.7
Lincoln	31	6.0	9.7	125	9.7	6.1	66	8.2	6.2	21,509	-1.0	1.1
Middlebury	475	-0.5	-0.2	7,433	0.9	0.2	4,043	2.7	0.9	34,396	1.8	3.4
Monkton	24	-	-0.6	127	-0.2	4.2	76	4.5	7.6	24,519	6.1	4.5
New Haven	68	-2.5	0.5	525	-11.5	0.2	273	-16.5	-2.0	27,041	10.6	6.5
Orwell	35	-0.7	1.2	200	2.7	-4.2	88	2.3	1.5	26,396	9.6	2.9
Panton	10	5.6	0.5	39	14.6	-0.8	12	20.5	-	21,209	4.1	5.1
Ripton	17	-8.0	2.2	46	-19.0	5.4	27	-17.8	7.5	20,568	6.4	2.1
Salisbury	37	8.1	-2.3	252	7.5	2.6	110	15.5	5.0	20,974	-0.4	2.9
Shoreham	41	13.3	1.8	201	6.4	-0.2	91	1.7	-2.5	24,982	-4.7	2.5
Starksboro	27	-	3.0	155	3.5	5.2	84	2.8	4.4	27,732	-0.3	4.6
Vergennes	148	6.1	2.4	2,166	3.9	-0.3	1,006	5.9	-1.6	39,529	-	4.6
Waltham	7	-	3.1	22	7.3	3.6	4	-5.9	-9.9	23,304	-1.2	4.5
Weybridge	23	23.0	8.7	109	7.0	-2.7	37	3.5	-10.8	28,385	-4.6	12.2
Whiting	15	11.3	1.4	51	17.0	-3.2	16	47.7	-3.8	27,413	-6.3	6.4
03. Bennington	1,602	1.2	-0.1	17,956	0.6	-1.2	9,758	1.6	-0.2	30,939	2.5	3.9
Arlington	108	4.1	-1.0	867	3.5	-5.5	400	0.9	-7.3	32,110	-0.6	2.1
Bennington	650	0.7	-0.3	10,431	1.3	-1.0	5,939	3.6	0.8	31,236	2.2	4.1
Dorset	111	-2.2	1.4	710	0.9	1.9	339	-0.1	1.0	31,806	3.1	4.0
Landgrove	12	14.6	8.0	54	10.6	1.5	22	30.3	9.4	29,344	1.1	1.1
Manchester	466	2.1	0.1	4,276	-3.2	-1.3	2,400	-5.2	-1.4	31,078	5.4	4.7
Peru	19	-11.5	-4.1	215	-7.2	-1.8	85	-	-1.1	19,998	0.4	3.8
Pownal	40	6.7	-1.1	229	2.3	-1.0	104	5.3	-3.3	26,374	-4.3	3.9
Readsboro	19	2.7	3.9	97	19.6	4.2	43	21.3	1.7	20,621	-10.7	2.9
Rupert	17	11.5	3.6	66	7.3	2.2	29	11.4	3.6	21,740	-4.9	1.1
Sandgate	n	n	n	n	n	n	n	n	n	n	n	n
Searsburg	n	n	n	n	n	n	n	n	n	n	n	n
Shaftsbury	59	-0.4	-1.7	459	17.3	-4.7	173	29.3	-5.4	31,873	-5.2	0.3
Stamford	18	-2.7	-1.8	93	5.4	-3.9	38	7.0	-2.5	23,789	-2.6	-
Sunderland	21	2.4	3.1	104	24.2	3.7	53	31.9	7.5	38,348	11.1	4.5
Winhall	52	0.5	2.0	324	-5.2	4.8	119	3.0	6.8	29,346	-1.5	4.9
Woodford	7	-13.3	-8.3	21	-20.6	-5.6	13	-24.3	-3.7	23,913	7.9	8.5
Glastenbury	-	-	-	-	-	-	-	-	-	-	-	-
05. Caledonia	1,046	0.4	-0.1	11,593	0.4	-	5,788	0.3	0.1	28,773	4.6	4.0
Barnet	46	8.8	4.3	205	-0.5	-0.4	103	8.1	0.1	26,367	4.5	1.3
Burke	44	-3.3	-4.0	327	2.6	-2.2	177	10.1	-0.4	18,196	2.6	1.9
Danville	78	-3.1	2.1	480	-6.5	1.0	253	-4.4	-0.7	25,861	5.7	5.2

See footnotes at end of table.

Table 2: Continued

Vermont County and Town, 2005, Total Covered

annual average with percent change from 2004 and 2000, establishments, employment, women, average wage

County / Town	Establishments			Employment						Average Wage		
	2005	Pct change		2005	Pct change		2005	Pct change		2005	Pct change	
		From	Avg/4		From	Avg/4		From	Avg/4		From	Avg/4
		2004	00-05		2004	00-05		2004	00-05		2004	00-05
%	%	%	%	%	%	%	%	%	%	%		
Groton	24	-2.1	1.3	99	-7.8	2.6	29	-0.8	0.7	31,245	0.8	3.7
Hardwick	118	3.7	0.3	863	-0.3	0.9	442	-2.8	-0.3	25,570	2.7	6.1
Kirby	n	n	n	n	n	n	n	n	n	n	n	n
Lyndon	182	-1.4	-0.1	2,877	-1.4	0.4	1,290	-0.4	0.9	28,371	1.3	2.5
Newark	9	-5.3	7.6	49	23.0	3.6	23	5.8	3.1	22,231	9.3	7.7
Peacham	14	-8.3	2.3	69	-11.1	2.0	30	-21.3	-2.7	21,426	9.2	2.1
Ryegate	20	-4.9	-7.5	96	-3.4	-12.7	28	-2.6	-3.9	34,436	5.0	0.6
St. Johnsbury	439	0.6	-0.5	6,047	2.0	-0.1	3,213	0.3	-0.1	30,528	6.4	4.7
Sheffield	10	40.7	5.6	56	0.9	1.9	37	8.0	-0.5	21,137	9.9	6.0
Stannard	n	n	n	n	n	n	n	n	n	n	n	n
Sutton	14	1.8	-5.2	138	4.7	2.3	53	24.3	0.3	25,537	-10.7	3.3
Walden	7	8.3	5.4	51	15.9	4.3	29	25.8	1.4	28,813	7.0	9.6
Waterford	32	5.0	1.1	206	-0.6	1.2	74	3.9	-0.4	27,271	9.4	7.1
Wheelock	7	-12.9	3.3	24	9.7	5.3	8	3.4	-1.3	16,049	11.9	6.6
07. Chittenden	5,718	0.7	0.3	94,799	-0.1	-0.1	44,248	0.4	0.5	39,766	3.5	3.0
Bolton	11	-36.4	-8.1	64	-60.2	-21.2	27	-52.8	-16.8	26,846	34.5	10.1
Buel's Gore	-	-	-	-	-	-	-	-	-	-	-	-
Burlington	1,470	-0.3	-1.4	32,498	-0.2	0.6	17,618	0.9	1.3	40,240	4.0	3.5
Charlotte	106	-	-0.5	485	-2.1	-3.1	250	-0.7	-2.9	37,433	6.1	4.9
Colchester	520	0.7	0.6	8,438	-1.5	-0.3	3,788	-0.9	-0.4	39,282	6.3	4.6
Essex	642	1.0	0.3	12,414	-2.6	-4.6	4,511	-3.5	-3.5	53,191	3.3	2.9
Hinesburg	115	-	2.7	1,086	0.5	4.9	542	1.8	3.4	32,868	3.3	6.2
Huntington	34	9.8	-0.9	159	8.4	-3.3	65	-1.5	-3.2	34,712	3.2	4.9
Jericho	109	1.4	-0.5	717	2.2	0.5	355	2.5	1.8	30,407	3.9	3.1
Milton	219	3.4	1.4	2,476	0.6	0.9	979	6.5	1.3	35,737	-1.8	3.3
Richmond	135	-4.1	0.2	1,083	-2.1	1.5	558	-1.1	2.0	31,754	5.9	6.3
St. George	10	-15.6	1.1	54	-1.7	5.1	15	-18.3	0.7	22,678	0.4	3.6
Shelburne	323	3.4	-0.6	3,272	-	-0.5	1,766	-0.7	0.9	30,287	3.6	3.7
South Burlington	1,053	1.0	1.7	17,856	1.1	0.4	8,048	0.7	0.8	36,560	2.8	2.6
Underhill	70	2.6	0.6	359	5.6	4.4	115	4.6	3.4	46,656	14.4	11.9
Westford	28	-2.6	1.1	234	1.1	3.6	101	-10.9	-0.1	25,378	6.3	3.8
Williston	709	3.7	2.4	11,047	3.7	2.6	4,258	4.5	2.7	36,274	2.2	1.8
Winooski	166	-5.4	-2.9	2,557	-2.7	-0.8	1,254	-3.5	-1.3	34,389	3.8	4.6
09. Essex	175	2.9	-0.6	1,596	6.3	-2.3	682	4.8	-0.2	29,141	4.7	3.4
Averill	n	n	n	n	n	n	n	n	n	n	n	n
Avery's Gore	-	-	-	-	-	-	-	-	-	-	-	-
Bloomfield	n	n	n	n	n	n	n	n	n	n	n	n
Brighton	47	2.7	-1.3	301	7.4	-2.4	171	11.4	0.1	21,270	-0.1	2.0
Brunswick	-	-	-	-	-	-	-	-	-	-	-	-
Canaan	36	-2.1	0.7	668	-0.6	-5.0	223	-4.2	-2.9	31,493	4.8	3.1
Concord	27	8.2	-0.9	195	2.9	1.7	111	9.4	0.3	24,605	-1.4	5.3
East Haven	4	6.3	-	22	-4.7	-1.9	20	-1.3	1.9	13,618	5.9	-0.2
Ferdinand	n	n	n	n	n	n	n	n	n	n	n	n
Granby	6	-	3.7	25	16.0	6.3	12	23.7	16.4	38,755	8.0	2.9
Guildhall	9	12.5	-0.5	39	16.8	2.5	23	16.9	1.6	21,723	-4.8	13.4
Lemington	n	n	n	n	n	n	n	n	n	n	n	n
Lewis	-	-	-	-	-	-	-	-	-	-	-	-

See footnotes at end of table.

Table 2: Continued

Vermont County and Town, 2005, Total Covered

annual average with percent change from 2004 and 2000, establishments, employment, women, average wage

County / Town	Establishments			Employment						Average Wage		
	2005	Pct change		2005	Pct change		2005	Pct change		2005	Pct change	
		From 2004	Avg/4 00-05		From 2004	Avg/4 00-05		From 2004	Avg/4 00-05		From 2004	Avg/4 00-05
		%	%		%	%		%	%		%	%
Lunenburg	21	2.4	-2.6	214	39.1	-3.6	66	6.0	-4.0	34,244	20.0	2.9
Maidstone	n	n	n	n	n	n	n	n	n	n	n	n
Norton	16	1.6	3.4	61	-	3.4	14	14.3	0.4	39,774	-2.9	4.9
Victory	n	n	n	n	n	n	n	n	n	n	n	n
Warner's Grant	-	-	-	-	-	-	-	-	-	-	-	-
Warren Gore	-	-	-	-	-	-	-	-	-	-	-	-
11. Franklin	1,210	-0.1	-0.1	15,691	1.0	1.1	7,935	3.9	1.1	32,566	3.6	4.3
Bakersfield	12	-13.2	-5.8	77	-12.2	-6.9	51	-16.4	-5.6	20,572	13.4	5.0
Berkshire	13	25.0	0.8	105	23.6	8.7	56	16.6	2.4	22,774	12.3	6.9
Enosburg	109	4.6	0.9	1,076	-2.2	0.4	508	2.4	-0.7	25,515	-0.2	4.2
Fairfax	82	-6.3	1.8	668	3.9	4.1	315	1.4	3.4	29,604	1.3	3.4
Fairfield	39	1.3	1.5	170	-2.5	1.7	80	-7.2	-2.4	26,294	15.1	5.9
Fletcher	11	16.7	-0.9	57	12.1	3.8	38	5.6	3.8	21,685	14.6	4.1
Franklin	22	-5.4	0.5	138	-3.3	-2.2	75	4.5	1.0	20,260	-2.9	3.3
Georgia	65	6.1	4.6	805	5.9	3.1	367	7.0	7.1	34,584	-0.9	2.6
Highgate	51	0.5	-1.3	660	-3.0	4.9	370	0.7	9.3	34,391	6.3	4.5
Montgomery	33	-0.7	0.3	164	-0.8	0.9	95	-2.6	1.1	20,881	6.7	3.7
Richford	44	-2.2	-4.6	677	1.6	1.4	344	3.5	2.9	30,754	6.3	4.5
St. Albans City	406	-0.9	-2.5	7,538	-0.4	0.8	3,949	4.8	0.4	35,424	5.4	4.8
St. Albans Town	133	6.8	8.2	1,536	7.3	2.6	817	5.4	2.0	29,525	-0.9	3.1
Sheldon	33	-2.9	-2.1	393	6.8	1.4	128	6.7	0.8	35,809	-3.0	2.9
Swanton	160	-5.1	-0.3	1,627	1.1	-1.5	740	2.6	-0.8	30,760	2.0	3.8
13. Grand Isle	230	4.4	3.1	1,184	1.7	3.5	606	1.7	3.5	24,846	2.3	3.8
Alburg	59	11.8	4.2	297	5.5	6.8	154	1.8	6.2	26,201	0.3	8.0
Grand Isle	53	9.3	2.9	276	1.8	2.5	119	1.1	4.4	29,814	7.4	4.5
Isle La Motte	18	-2.8	-0.8	57	-5.0	5.0	35	-7.3	9.6	18,524	7.1	2.3
North Hero	36	-0.7	4.5	215	-6.5	-	107	0.5	-2.0	22,794	-3.9	1.4
South Hero	65	-0.4	2.7	339	5.2	3.9	191	4.7	3.7	21,975	2.1	1.7
15. Lamoille	1,092	3.5	1.6	11,016	3.6	0.8	5,916	1.7	1.1	27,638	2.4	4.8
Belvidere	n	n	n	n	n	n	n	n	n	n	n	n
Cambridge	124	1.0	1.1	1,290	2.0	-0.1	762	-2.8	3.2	24,315	5.5	4.1
Eden	18	16.7	7.8	95	10.4	4.9	68	5.9	4.6	19,210	0.8	4.8
Elmore	10	-	-4.6	37	49.3	7.1	17	30.2	3.5	19,503	18.9	6.2
Hyde Park	87	3.0	2.5	757	1.6	4.5	383	2.4	4.2	30,508	0.8	3.9
Johnson	85	1.8	1.4	921	5.3	0.3	490	0.7	1.6	30,415	4.0	5.3
Morristown	324	4.1	2.3	3,756	4.7	1.0	2,141	4.5	1.2	29,070	-0.2	4.4
Stowe	387	3.9	1.4	3,905	2.9	0.1	1,955	0.6	-0.2	26,641	4.3	5.5
Waterville	18	5.9	2.1	48	3.8	-1.5	25	10.0	-	29,155	8.2	6.1
Wolcott	37	3.5	-2.4	203	2.7	1.6	74	-4.9	-2.9	23,113	-3.7	3.9
17. Orange	862	0.3	1.1	7,889	0.5	0.1	4,059	1.0	0.1	28,662	4.2	4.3
Bradford	119	-4.2	-0.5	1,465	-	0.5	740	-1.1	-1.6	29,104	9.6	5.0
Braintree	23	3.4	13.2	116	6.8	6.7	46	7.6	0.8	24,348	5.5	7.8
Brookfield	27	-	2.4	113	-4.6	-3.0	42	-17.8	-6.0	27,509	-3.2	1.2
Chelsea	52	-	0.5	382	7.7	2.1	211	7.3	3.5	24,178	3.4	1.8
Corinth	27	-	0.6	168	-3.1	0.2	108	-4.9	0.8	29,121	14.5	6.8
Fairlee	73	8.2	3.8	587	3.6	1.2	284	14.2	1.8	25,482	-2.0	4.6
Newbury	63	2.9	0.2	574	-5.0	-1.0	335	-3.4	-1.8	26,331	7.3	5.3

See footnotes at end of table.

Table 2: Continued

Vermont County and Town, 2005, Total Covered

annual average with percent change from 2004 and 2000, establishments, employment, women, average wage

County / Town	Establishments			Employment						Average Wage		
	2005	Pct change		2005	Pct change		2005	Pct change		2005	Pct change	
		From 2004	Avg/4 00-05		From 2004	Avg/4 00-05		From 2004	Avg/4 00-05		From 2004	Avg/4 00-05
		%	%		%	%		%	%		%	%
Orange	8	-30.2	-9.3	49	-13.2	-8.9	32	-3.8	1.1	20,507	12.5	5.2
Randolph	196	3.4	2.6	2,610	1.2	-1.7	1,441	0.6	-0.4	30,487	2.4	4.0
Strafford	42	3.8	3.8	144	-7.2	0.9	75	-1.0	-1.6	26,925	-3.6	7.6
Thetford	82	-6.3	-1.3	694	2.7	3.5	310	4.6	6.1	30,984	1.9	4.1
Topsham	19	-2.6	2.9	64	-6.1	3.1	18	-9.1	-1.1	26,413	8.2	8.1
Tunbridge	25	-6.6	-6.3	179	-3.0	0.1	87	-5.2	-2.9	25,361	0.9	2.4
Vershire	19	-	-0.3	106	3.2	2.9	52	16.2	4.0	21,757	0.2	1.8
Washington	21	3.8	4.7	111	12.5	6.7	56	23.2	5.5	24,796	3.5	3.8
West Fairlee	7	-12.5	-0.7	10	-27.2	-17.8	3	-25.0	-27.5	19,014	-7.5	2.4
Williamstown	63	5.4	1.7	519	-1.2	2.3	222	-3.1	2.6	30,750	7.0	4.6
19. Orleans	973	3.6	1.4	9,919	0.7	1.0	5,153	0.1	0.9	27,613	3.7	3.6
Albany	17	11.7	0.3	50	6.8	-4.9	26	-14.9	-5.5	23,730	0.1	-0.2
Barton	122	2.1	0.2	1,414	1.6	-2.8	726	1.3	-0.6	25,301	3.5	3.2
Brownington	12	6.8	4.3	46	16.9	7.8	30	3.4	7.1	19,180	2.1	8.1
Charleston	17	7.8	3.9	96	12.4	0.9	40	8.9	-5.3	21,438	-4.2	6.2
Coventry	19	13.4	0.3	138	34.7	0.2	44	-4.3	0.3	31,666	41.5	6.6
Craftsbury	40	7.5	4.6	248	-1.2	-0.6	146	1.4	-0.9	24,288	7.0	7.3
Derby	166	-0.5	0.1	1,737	1.5	0.2	667	1.1	-2.6	32,672	2.6	5.5
Glover	23	-	8.9	181	7.7	7.5	106	7.4	0.4	21,912	6.5	6.5
Greensboro	40	1.3	-1.4	299	2.3	3.6	189	3.1	2.0	20,852	-0.5	2.5
Holland	7	-	9.7	48	6.3	13.1	24	2.2	4.8	20,743	11.3	5.6
Irasburg	38	16.3	4.2	200	6.1	1.9	69	8.2	2.7	26,104	-0.5	3.9
Jay	22	19.2	5.4	321	8.3	5.8	150	2.9	3.0	20,790	4.6	3.8
Lowell	12	-2.0	2.7	66	19.9	3.4	38	5.6	-3.1	19,770	7.8	12.0
Morgan	15	-9.2	-1.0	56	0.4	-1.7	29	-1.7	-3.6	27,735	0.8	12.2
Newport City	296	0.6	1.1	4,266	-3.0	1.7	2,478	-2.7	2.3	28,647	4.1	2.5
Newport Town	64	13.9	4.0	354	-3.3	2.6	197	1.7	2.2	25,538	6.7	5.4
Troy	44	4.8	-1.4	287	5.6	4.6	133	10.9	5.0	26,943	5.2	3.9
Westfield	17	32.7	5.8	68	28.3	1.3	35	12.9	-2.0	19,611	-11.4	1.7
Westmore	5	-	-1.0	47	30.0	6.8	28	82.3	19.2	14,212	-3.8	-0.8
21. Rutland	2,486	0.5	0.3	29,693	1.3	0.5	14,407	2.0	0.9	32,194	2.4	3.9
Benson	19	21.3	6.5	135	1.6	6.0	78	-5.5	9.0	22,907	11.5	2.0
Brandon	127	3.0	-1.6	1,556	3.8	-0.7	840	7.3	-	27,488	1.7	3.0
Castleton	129	2.4	3.0	1,546	13.4	6.4	792	19.6	6.9	28,024	-0.1	4.2
Chittenden	25	-6.7	-3.0	160	2.1	0.9	89	17.0	3.5	25,864	4.6	9.9
Clarendon	90	-2.7	2.5	1,345	3.0	5.9	687	4.8	10.1	27,776	0.5	0.6
Danby	39	2.0	1.6	264	5.6	2.4	102	8.6	4.6	35,854	12.9	6.2
Fair Haven	99	-2.9	0.3	962	-2.4	-0.4	497	4.5	1.0	24,492	3.1	3.0
Hubbardton	6	-14.3	-	15	-21.4	-6.3	8	-9.1	2.9	17,066	39.5	2.9
Ira	n	n	n	n	n	n	n	n	n	n	n	n
Mendon	48	3.2	-0.7	422	12.1	2.1	164	0.6	-1.3	26,913	9.6	5.1
Middletown Springs	28	4.6	4.4	141	33.9	20.5	48	-8.6	12.0	29,327	16.1	3.8
Mount Holly	34	-0.7	2.6	188	9.5	0.3	66	3.1	0.5	27,396	1.5	2.8
Mount Tabor	n	n	n	n	n	n	n	n	n	n	n	n
Pawlet	53	1.4	2.4	294	5.0	-2.7	120	-1.2	-4.7	25,472	3.7	2.5
Pittsfield	24	6.7	3.5	132	0.1	-1.4	45	-2.2	-0.1	31,916	7.9	5.2

See footnotes at end of table.

Table 2: Continued

Vermont County and Town, 2005, Total Covered

annual average with percent change from 2004 and 2000, establishments, employment, women, average wage

County / Town	Establishments			Employment						Average Wage		
	2005	Pct change		2005	Pct change		2005	Pct change		2005	Pct change	
		From 2004	Avg/4 00-05		From 2004	Avg/4 00-05		From 2004	Avg/4 00-05		From 2004	Avg/4 00-05
		%	%		%	%		%	%		%	%
Pittsford	88	1.4	-1.9	819	-0.9	-2.9	228	8.8	-2.8	36,791	2.2	4.7
Poultney	106	1.2	-1.1	989	1.8	-1.3	419	1.0	-1.6	28,379	4.6	3.4
Proctor	29	-7.1	-3.4	373	-3.4	1.8	174	-3.2	3.4	47,473	7.6	5.7
Rutland City	982	-0.4	-0.2	13,452	0.4	0.8	7,233	-0.2	0.7	34,676	1.6	4.1
Rutland Town	179	7.8	2.2	3,768	2.5	0.4	1,423	7.1	0.8	36,666	1.0	3.5
Killington	153	-2.1	0.1	1,749	-6.4	-4.1	840	-7.5	-4.3	24,921	9.7	4.6
Shrewsbury	31	-3.1	0.3	241	0.1	5.7	87	-5.2	4.0	27,144	3.0	4.6
Sudbury	7	-	-6.9	20	-48.7	-13.2	12	-11.1	-8.0	21,411	-25.6	-2.8
Tinmouth	8	-11.1	9.9	32	1.9	3.8	18	-2.7	-2.3	16,273	8.6	3.4
Wallingford	69	-	-0.3	421	4.2	-0.4	171	6.5	1.1	25,623	3.0	3.3
Wells	26	-7.1	-1.3	119	-18.9	1.1	43	-18.6	-2.9	21,049	3.0	2.3
West Rutland	71	1.1	1.7	504	-2.0	-4.2	214	-0.1	-1.9	27,588	3.9	5.4
West Haven	7	20.8	7.7	16	55.7	4.3	3	11.1	2.1	15,118	14.1	-0.3
23. Washington	2,541	0.6	0.5	32,643	1.1	0.3	16,141	0.7	0.1	34,530	3.6	4.1
Barre City	425	-3.8	-0.7	4,852	0.5	-0.3	2,331	1.5	-0.7	30,843	2.1	4.0
Barre Town	175	8.7	1.6	1,849	0.8	-7.2	609	-2.9	-5.0	34,157	2.5	1.8
Berlin	218	0.8	-	5,167	1.3	1.6	3,024	-0.5	0.4	33,084	3.5	4.9
Cabot	29	3.6	4.6	531	-7.5	3.1	235	12.8	3.5	33,260	6.6	3.5
Calais	31	9.6	-2.2	112	10.4	0.8	46	12.3	2.4	49,306	49.2	15.3
Duxbury	11	-15.1	-2.5	211	7.0	6.3	120	7.6	3.7	33,293	-4.1	1.3
East Montpelier	59	-2.5	-0.8	634	-7.9	1.2	260	-6.3	-0.9	33,484	7.6	4.6
Fayston	31	-3.9	2.3	215	6.7	7.7	88	-6.9	3.0	24,464	0.4	4.0
Marshfield	26	-7.9	1.6	204	-4.0	19.2	116	-6.1	29.0	27,345	5.2	13.7
Middlesex	37	2.1	0.7	281	1.2	3.5	72	7.5	-3.3	37,833	-4.6	5.5
Montpelier	636	1.7	0.4	8,920	0.2	-0.5	4,782	-	0.1	38,817	3.2	4.5
Moretown	52	6.1	2.8	440	9.7	8.4	142	3.6	6.8	41,535	12.8	7.2
Northfield	128	-1.5	-0.9	1,828	0.9	0.7	1,012	3.6	1.7	30,416	2.3	4.8
Plainfield	49	0.5	2.1	483	14.0	-1.4	210	7.6	-7.1	24,840	-2.1	0.1
Roxbury	17	7.8	1.8	81	-6.5	0.8	37	-0.7	4.5	24,845	12.4	7.8
Waitsfield	211	2.7	2.2	1,403	2.7	2.0	663	2.0	1.5	30,816	6.3	3.4
Warren	98	-3.0	-0.2	918	5.9	2.1	411	-8.2	-1.0	20,174	0.1	2.0
Waterbury	281	0.8	1.6	4,378	2.6	2.5	1,916	3.1	0.9	39,140	5.6	3.9
Woodbury	8	6.7	-7.4	50	4.0	-5.8	30	1.7	1.0	18,803	-11.6	-1.8
Worcester	20	1.3	1.9	86	-16.0	2.3	39	-0.6	3.8	26,924	-3.9	-1.4
25. Windham	1,945	0.9	-	22,920	-0.3	-1.0	11,492	0.9	0.3	33,060	0.4	3.5
Athens	n	n	n	n	n	n	n	n	n	n	n	n
Brattleboro	751	-0.1	-0.3	11,363	0.6	-1.6	5,763	2.2	-0.4	34,189	-0.4	2.3
Brookline	13	16.3	4.0	67	-3.3	2.7	41	-6.9	3.9	16,377	12.9	4.8
Dover	111	3.5	1.1	1,179	1.2	-1.2	611	0.4	-1.2	21,208	2.2	2.8
Dummerston	41	7.1	-0.9	257	-0.1	-0.9	114	4.1	2.5	33,063	2.6	3.8
Grafton	22	-	1.7	176	0.2	-3.0	77	1.7	-6.1	29,329	-0.1	2.5
Guilford	46	-2.2	2.9	184	-6.6	-1.7	73	-12.6	-1.8	33,380	8.2	8.2
Halifax	13	6.3	-2.9	58	-14.0	-0.6	35	-4.7	0.7	19,924	19.5	4.6
Jamaica	40	10.3	6.6	184	-3.7	7.7	81	-5.8	13.4	25,707	11.1	4.6

See footnotes at end of table.

Table 2: Continued

Vermont County and Town, 2005, Total Covered

annual average with percent change from 2004 and 2000, establishments, employment, women, average wage

County / Town	Establishments			Employment						Average Wage		
	2005	Pct change		2005	Pct change		2005	Women		2005	Pct change	
		From	Avg/4		From	Avg/4		From	Avg/4			
		2004	00-05		2004	00-05		2004	00-05			
	%	%		%	%		%	%		%	%	
Londonderry	103	1.2	-0.2	593	3.5	0.1	279	0.4	1.3	25,634	-0.3	2.7
Marlboro	31	-8.3	-0.6	287	1.1	-4.7	191	11.6	-0.8	26,871	2.3	7.6
Newfane	52	-1.0	1.7	385	2.7	3.8	202	3.3	5.0	25,049	1.0	4.0
Putney	108	-1.1	-1.2	1,175	-1.2	-1.1	600	-	-1.5	30,478	5.6	4.9
Rockingham	195	0.4	-1.6	2,462	-2.9	-	1,313	-2.0	0.7	31,613	2.2	4.3
Somerset	-	-	-	-	-	-	-	-	-	-	-	-
Stratton	21	-5.6	-0.7	838	-1.9	-1.5	364	-4.3	1.0	27,170	3.5	5.7
Townshend	47	-6.9	0.1	557	-10.3	-0.1	361	-8.5	1.0	37,082	-5.7	5.9
Vernon	55	8.3	2.6	1,046	-	1.8	304	3.8	5.6	68,212	-2.8	6.6
Wardsboro	24	3.2	-0.4	104	0.6	-3.6	52	-1.9	-1.3	29,838	15.7	10.4
Westminster	74	7.7	1.6	648	0.5	-3.9	292	5.2	-	31,083	4.5	3.8
Whitingham	35	-4.1	-	207	-23.8	-2.6	100	-32.6	-1.7	23,121	-6.2	0.6
Wilmington	155	4.9	-0.4	1,117	8.6	2.3	628	11.3	4.4	24,821	4.7	4.9
Windham	6	-22.6	1.8	28	-8.2	1.5	12	-15.8	5.3	22,926	-7.9	3.5
27. Windsor	2,377	-1.2	0.2	23,942	1.4	0.4	11,396	1.7	1.2	32,240	2.5	3.3
Andover	13	2.0	5.4	41	-6.4	2.6	14	1.8	18.9	26,181	5.4	-3.6
Baltimore	n	n	n	n	n	n	n	n	n	n	n	n
Barnard	34	9.8	0.6	172	9.5	1.0	86	15.4	3.5	27,370	1.3	1.2
Bethel	88	1.1	1.3	1,059	2.7	1.5	435	5.1	2.1	31,681	-2.4	0.8
Bridgewater	47	-5.6	-0.4	288	-6.9	-3.5	117	-18.3	-2.7	27,223	6.7	1.2
Cavendish	45	-1.1	1.5	525	3.5	-0.1	223	6.8	-1.1	28,249	-1.9	3.6
Chester	125	-3.7	-2.1	952	-1.6	-2.2	504	0.2	-2.4	28,811	2.1	3.9
Hartford	467	1.1	1.4	6,135	2.4	1.2	2,368	5.5	2.8	38,167	2.2	4.5
Hartland	74	-2.0	4.3	432	2.1	2.1	195	-3.3	2.2	31,852	4.4	2.3
Ludlow	176	-0.7	0.4	1,962	4.0	1.6	934	5.1	1.7	24,980	-3.7	2.7
Norwich	128	-5.7	-1.3	746	-11.8	-1.7	389	-8.2	-1.8	31,302	-0.5	3.3
Plymouth	21	-8.8	-1.6	218	-2.4	2.5	98	6.8	9.4	21,737	0.4	-2.5
Pomfret	36	5.1	5.3	171	-3.2	1.3	97	-12.6	2.0	27,862	5.7	2.6
Reading	26	8.5	-0.2	92	-1.7	1.1	51	-5.6	3.4	22,132	7.1	6.6
Rochester	60	-2.8	-0.5	366	-5.1	0.4	203	-5.3	1.2	29,207	9.5	2.3
Royalton	89	-4.6	-0.8	1,033	7.9	4.4	487	3.2	4.4	35,405	4.2	2.5
Sharon	39	6.2	-0.6	218	5.4	0.5	89	1.4	4.7	27,653	3.1	3.6
Springfield	322	0.2	-0.7	4,510	1.7	-1.7	2,440	1.8	-0.2	32,871	4.3	2.2
Stockbridge	20	-3.7	0.5	106	-2.0	-3.6	46	-1.6	-0.4	30,531	5.2	-0.4
Weathersfield	74	-3.0	0.6	424	0.2	1.8	181	1.1	4.9	28,590	3.0	3.6
Weston	36	-6.0	-3.0	180	-12.4	-4.0	102	-20.8	-4.8	21,461	7.3	3.2
West Windsor	35	-2.8	0.7	249	0.4	-4.5	120	6.9	-1.5	22,071	5.4	-0.4
Windsor	142	1.1	1.1	1,618	1.3	1.0	945	-1.0	1.1	32,129	5.3	5.2
Woodstock	282	-4.3	-1.0	2,441	2.3	1.5	1,271	2.1	1.7	29,603	2.2	3.8
99. Other /1	955	2.1	6.6	6,029	7.3	18.4	3,628	12.6	38.4	28,573	-4.1	-3.8

/1 Location of business is statewide, countywide.

/4 Avg is compounded annual average percent change.

n = Data is confidential.

"- " = There is no data to report.

Note: Changes may be influenced by reclassification of specific firms and or improved multiple worksite information.

Note: Detail may not add to totals due to rounding.

Table 3

Vermont County and Industry Sectors, 2005, Total Covered

annual average with percent change from 2004 and 2000, establishments, employment, women, average wage

County / NAICS Major Industry Group	Establishments			Employment						Average Wage		
	2005	Pct change		2005	Total		Women		2005	Pct change		
		From 2004	Avg/2 00-05		From 2004	Avg/2 00-05	From 2004	Avg/2 00-05		From 2004	Avg/2 00-05	
		%	%		%	%	%	%		%	%	
Vermont - Total Covered	24,533	0.8	0.6	300,941	0.8	0.3	148,415	1.4	0.9	34,199	2.8	3.4
Private Ownership	22,768	0.9	0.6	249,792	0.7	0.1	120,703	1.3	0.9	33,648	2.8	3.2
Goods Producing - Private	4,731	1.3	1.9	56,717	0.0	-2.6	13,637	1.1	-3.3	42,332	2.7	2.7
Natural Resources and Mining	417	-2.9	1.7	3,010	-1.7	-0.9	755	-1.1	-2.4	27,460	2.8	2.5
Sector 11, Agriculture, forestry, fishing & hunting	357	-2.3	2.6	2,315	0.6	1.0	680	1.0	-1.6	23,216	3.8	3.5
Sector 21, Mining	60	-5.9	-3.0	695	-8.8	-5.8	75	-17.4	-8.0	41,590	4.5	3.3
Construction	3,118	2.9	3.5	16,867	1.2	2.5	1,943	7.2	3.0	36,322	4.4	3.0
Sector 23, Construction	3,118	2.9	3.5	16,867	1.2	2.5	1,943	7.2	3.0	36,322	4.4	3.0
Manufacturing	1,196	-1.0	-1.5	36,840	-0.4	-4.6	10,939	0.2	-4.2	46,298	2.1	3.1
Durable Goods	779	-1.3	-1.3	26,422	0.0	-4.9	7,152	-0.5	-4.5	49,807	1.7	3.4
Non-Durable Goods	417	-0.4	-1.7	10,418	-1.3	-3.9	3,787	1.5	-3.7	37,399	3.0	2.2
Service Providing - Private	18,037	0.8	0.2	193,075	0.9	0.9	107,066	1.3	1.5	31,098	3.0	3.9
Trade, Transportation, and Utilities	5,606	-0.1	-0.3	59,167	0.8	0.4	24,884	0.7	0.5	30,223	1.6	3.5
Sector 42, Wholesale trade	1,342	0.4	2.0	10,072	-1.2	0.3	2,848	2.3	0.7	45,926	2.8	3.7
Sector 44-45, Retail trade	3,654	-0.4	-0.9	40,464	1.1	0.4	19,681	0.2	0.3	23,746	1.3	3.7
Sector 48-49, Transportation & warehousing	562	1.4	-1.1	6,927	2.5	0.4	1,953	4.0	2.6	32,778	2.1	1.4
Sector 22, Utilities	48	-3.0	-2.9	1,703	-0.6	0.1	404	0.8	1.0	80,832	2.7	5.8
Information	504	-2.3	1.0	6,232	-2.0	-1.9	3,098	-3.3	-1.3	39,590	1.8	3.6
Sector 51, Information	504	-2.3	1.0	6,232	-2.0	-1.9	3,098	-3.3	-1.3	39,590	1.8	3.6
Financial Activities	1,715	1.4	1.6	12,914	-0.7	0.4	8,165	-0.8	0.5	48,255	4.6	5.0
Sector 52, Finance and Insurance	958	0.8	1.3	9,650	-1.0	0.1	6,707	-0.5	0.2	54,582	5.3	5.2
Sector 53, Real estate & rental & leasing	757	2.1	1.9	3,263	0.3	1.4	1,458	-2.2	2.1	29,547	1.4	4.8
Professional and Business Services	3,755	3.3	2.5	21,846	2.7	0.9	9,601	1.9	0.9	41,670	3.7	4.5
Sector 54, Professional, scientific, & technical svcs.	2,602	4.0	2.6	12,797	1.6	0.8	6,312	0.9	1.7	52,299	6.7	4.5
Sector 55, Mgt. of companies & enterprises	22	-4.3	-3.6	308	0.5	0.5	133	-4.3	-1.5	63,025	8.9	7.9
Sector 56, Administrative & waste services	1,131	1.9	2.4	8,741	4.4	1.1	3,156	4.3	-0.6	25,359	-3.7	4.6
Education & Health Services	2,205	2.4	2.0	50,793	2.2	3.5	38,531	2.9	3.8	32,925	3.8	3.2
Sector 61, Educational services	320	2.9	4.2	9,064	1.0	1.0	5,262	1.7	1.4	34,779	4.1	4.3
Sector 62, Health care & social assistance	1,885	2.3	1.6	41,728	2.5	4.1	33,268	3.1	4.2	32,523	3.8	3.0
Leisure and Hospitality	2,225	0.1	1.0	33,064	0.1	0.0	18,038	1.2	0.6	16,262	1.8	3.3
Sector 71, Arts, entertainment, & recreation	408	4.6	3.4	3,868	4.0	3.2	1,962	6.5	4.6	18,224	-1.0	1.4
Sector 72, Accommodation & food services	1,817	-0.9	0.5	29,196	-0.4	-0.3	16,076	0.6	0.2	16,002	2.1	3.5
Other Services	2,028	-2.0	-5.2	9,059	-2.6	-2.0	4,750	-1.6	-2.1	24,912	1.6	3.9
Sector 81, Other services, except public admin.	2,028	-2.0	-5.2	9,059	-2.6	-2.0	4,750	-1.6	-2.1	24,912	1.6	3.9
Government Ownership	1,765	-0.1	1.0	51,149	1.5	1.6	27,712	1.8	1.2	36,888	2.5	4.2
Federal Government /1	621	0.2	0.6	6,080	-2.7	0.1	-	-	-	53,995	5.3	5.8
491 Postal service	406	-0.7	0.4	2,110	-1.7	-2.7	-	-	-	42,833	-3.2	3.2
Other Federal Government	215	1.8	1.0	3,970	-3.2	1.7	-	-	-	59,926	9.1	6.6
State Government	316	-0.6	4.4	15,948	1.9	1.7	7,972	0.6	0.4	41,921	2.8	4.7
Sector 61, Educational Services	29	0.0	-1.0	5,991	3.6	1.5	3,353	2.2	0.7	39,432	2.4	4.4
Other State Government	287	-0.6	5.1	9,957	0.8	1.8	4,619	-0.6	0.2	43,419	3.1	4.9
Local Government	828	-0.2	0.2	29,120	2.2	1.8	19,740	2.3	1.5	30,559	1.8	3.3
Sector 61, Educational Services	276	0.2	0.0	21,210	1.8	1.6	16,716	2.2	1.4	31,081	2.1	3.2
Other Local Government	552	-0.4	0.3	7,911	3.3	2.3	3,024	3.0	2.5	29,159	1.1	3.8

See footnotes at end of table.

Table 3: Continued

Vermont County and Industry Sectors, 2005, Total Covered

annual average with percent change from 2004 and 2000, establishments, employment, women, average wage

County / NAICS Major Industry Group	Establishments			Employment						Average Wage		
	2005	Pct change		2005	Total		Women			2005	Pct change	
		From 2004	Avg/2 00-05		From 2004	Avg/2 00-05	From 2004	Avg/2 00-05	From 2004		Avg/2 00-05	
		%	%		%	%	%	%	%		%	
01. Addison - Total Covered	1,324	0.9	1.3	14,071	1.4	0.5	7,209	2.6	0.6	32,453	2.0	3.7
Private Ownership	1,204	1.1	1.3	12,011	1.5	0.4	5,847	1.8	0.4	32,901	2.3	3.8
Goods Producing - Private	333	0.9	3.4	3,449	-0.1	0.0	931	1.1	-0.8	38,284	2.7	3.2
Natural Resources and Mining	76	-5.3	1.9	574	-0.6	1.3	111	-3.1	-1.8	24,604	0.7	3.9
Sector 11, Agriculture, forestry, fishing & hunting	70	-4.4	2.8	555	4.3	2.6	111	2.1	-1.3	24,068	1.0	4.1
Sector 21, Mining	6	-14.8	-6.4	19	-58.3	-17.6	0	-100.0	-100.0	40,319	28.3	8.5
Construction	192	4.2	5.9	800	-1.6	3.1	103	-1.9	2.5	34,230	5.1	2.2
Sector 23, Construction	192	4.2	5.9	800	-1.6	3.1	103	-1.9	2.5	34,230	5.1	2.2
Manufacturing	64	-0.8	-1.1	2,075	0.7	-1.3	718	2.2	-1.1	43,634	2.1	3.8
Durable Goods	40	0.0	0.1	1,242	3.6	-2.2	435	3.5	-1.9	48,152	1.7	4.5
Non-Durable Goods	24	-2.0	-3.0	833	-3.4	0.0	284	0.4	0.2	36,894	1.6	2.6
Service Providing - Private	872	1.2	0.6	8,562	2.1	0.6	4,916	1.9	0.7	30,732	2.2	4.2
Trade, Transportation, and Utilities	282	1.1	-0.1	2,552	5.9	0.6	1,118	6.9	0.0	26,601	-3.7	2.8
Sector 42, Wholesale trade	58	9.5	0.6	280	10.5	-2.3	74	33.3	-1.9	38,542	0.6	4.4
Sector 44-45, Retail trade	190	-2.1	0.4	1,975	4.5	1.0	959	4.2	-0.2	24,595	-6.2	2.8
Sector 48-49, Transportation & warehousing	n	n	n	n	n	n	n	n	n	n	n	n
Sector 22, Utilities	n	n	n	n	n	n	n	n	n	n	n	n
Information	22	-12.2	4.2	120	0.8	-3.0	59	-0.8	-4.0	28,478	1.8	-0.3
Sector 51, Information	22	-12.2	4.2	120	0.8	-3.0	59	-0.8	-4.0	28,478	1.8	-0.3
Financial Activities	71	-0.7	1.4	430	1.6	-0.2	299	0.7	0.2	34,582	1.4	3.2
Sector 52, Finance and Insurance	38	-5.0	0.1	315	1.1	-1.2	234	0.8	0.3	39,712	2.7	3.1
Sector 53, Real estate & rental & leasing	33	4.8	3.0	115	3.2	3.1	66	0.4	-0.2	20,450	-3.5	7.4
Professional and Business Services	176	7.3	5.4	689	3.6	1.3	340	2.7	-0.2	37,013	5.3	5.5
Sector 54, Professional, scientific, & technical svcs.	130	9.5	6.2	480	5.6	2.3	281	2.7	1.0	41,112	6.4	5.0
Sector 55, Mgt. of companies & enterprises	-	-	-	-	-	-	-	-	-	-	-	-
Sector 56, Administrative & waste services	46	1.7	3.5	208	-0.8	-0.9	59	3.1	-5.0	27,556	-0.2	5.8
Education & Health Services	123	2.7	1.7	3,220	1.8	1.5	2,190	1.3	1.8	38,824	3.7	4.3
Sector 61, Educational services	n	n	n	n	n	n	n	n	n	n	n	n
Sector 62, Health care & social assistance	n	n	n	n	n	n	n	n	n	n	n	n
Leisure and Hospitality	93	-3.9	2.2	1,215	-4.1	-0.5	714	-2.6	0.9	15,570	4.1	4.4
Sector 71, Arts, entertainment, & recreation	15	-6.3	5.5	108	3.8	3.4	65	1.2	4.9	14,678	-5.5	-0.1
Sector 72, Accommodation & food services	78	-3.4	1.7	1,107	-4.8	-0.9	649	-3.0	0.6	15,657	5.1	4.8
Other Services	105	-0.9	-6.7	337	0.0	-2.3	198	1.2	-3.9	22,404	5.8	8.1
Sector 81, Other services, except public admin.	105	-0.9	-6.7	337	0.0	-2.3	198	1.2	-3.9	22,404	5.8	8.1
Government Ownership	120	-0.8	1.0	2,059	0.8	0.8	1,362	5.9	1.4	29,840	0.1	3.3
Federal Government /1	43	-2.3	2.0	132	-5.9	-3.0	-	-	-	41,378	0.7	5.0
491 Postal service	31	-3.1	0.7	86	-4.5	-1.5	-	-	-	39,645	-5.1	2.0
Other Federal Government	12	0.0	5.9	46	-8.4	-5.5	-	-	-	44,606	11.7	10.4
State Government	15	0.0	4.6	166	-0.2	-2.4	69	4.2	-2.5	37,812	4.9	6.2
Sector 61, Educational Services	2	0.0	0.0	43	-0.4	-3.1	20	17.6	-2.8	20,217	9.4	13.1
Other State Government	13	0.0	5.4	123	-0.1	-2.1	49	-0.5	-2.4	43,895	4.1	5.1
Local Government	62	0.0	-0.3	1,761	1.5	1.5	1,293	6.0	1.7	28,225	-0.3	2.9
Sector 61, Educational Services	27	0.0	0.0	1,477	1.8	1.7	1,192	5.8	1.6	28,894	-1.1	2.6
Other Local Government	35	0.0	-0.6	285	-0.2	0.5	101	7.8	2.2	24,750	4.5	4.5

See footnotes at end of table.

Table 3: Continued

Vermont County and Industry Sectors, 2005, Total Covered

annual average with percent change from 2004 and 2000, establishments, employment, women, average wage

County / NAICS Major Industry Group	Establishments			Employment						Average Wage		
	2005	Pct change		2005	Total		2005	Women		2005	Pct change	
		From 2004	Avg/2 00-05		From 2004	Avg/2 00-05		From 2004	Avg/2 00-05		From 2004	Avg/2 00-05
		%	%		%	%		%	%		%	%
03. Bennington - Total Covered	1,602	1.2	-0.1	17,956	0.6	-1.2	9,758	1.6	-0.2	30,939	2.5	3.9
Private Ownership	1,506	1.2	-0.2	15,898	0.2	-1.2	8,481	0.9	-0.3	30,584	3.0	4.0
Goods Producing - Private	280	4.8	2.2	3,476	1.6	-4.2	1,128	3.9	-3.9	37,760	0.3	2.8
Natural Resources and Mining	12	4.4	-1.6	85	-12.2	-4.5	33	-0.8	5.2	21,309	11.0	4.2
Sector 11, Agriculture, forestry, fishing & hunting	n	n	n	n	n	n	n	n	n	n	n	n
Sector 21, Mining	-	-	n	-	-	n	-	-	n	-	-	n
Construction	176	6.5	4.0	747	-1.1	2.5	97	8.7	2.8	33,440	1.5	3.7
Sector 23, Construction	176	6.5	4.0	747	-1.1	2.5	97	8.7	2.8	33,440	1.5	3.7
Manufacturing	92	1.7	-0.4	2,644	2.9	-5.6	999	3.6	-4.6	39,512	-0.6	2.8
Durable Goods	60	0.8	-0.2	1,946	3.1	-2.8	672	5.9	-1.9	40,839	-1.9	3.3
Non-Durable Goods	33	3.2	-0.6	698	2.6	-11.6	327	-0.8	-9.1	35,814	3.6	1.2
Service Providing - Private	1,226	0.4	-0.7	12,422	-0.2	-0.3	7,353	0.4	0.3	28,576	4.0	4.9
Trade, Transportation, and Utilities	387	-2.8	-2.2	3,881	-0.2	-1.2	1,923	-2.2	-0.6	26,491	3.0	3.9
Sector 42, Wholesale trade	45	-3.2	-2.6	302	13.5	-11.4	72	18.0	-13.5	41,130	3.8	2.8
Sector 44-45, Retail trade	318	-3.2	-1.8	3,374	-1.4	0.4	1,802	-3.2	0.3	24,755	2.0	5.2
Sector 48-49, Transportation & warehousing	n	n	n	n	n	n	n	n	n	n	n	n
Sector 22, Utilities	n	n	n	n	n	n	n	n	n	n	n	n
Information	30	-12.4	-0.7	381	-3.6	-5.1	221	0.6	-4.5	38,973	6.0	5.4
Sector 51, Information	30	-12.4	-0.7	381	-3.6	-5.1	221	0.6	-4.5	38,973	6.0	5.4
Financial Activities	112	-0.4	1.4	626	-6.4	1.9	401	-7.1	2.3	46,485	2.8	5.7
Sector 52, Finance and Insurance	54	1.4	3.1	422	-0.8	4.2	308	3.0	3.8	53,238	6.1	5.9
Sector 53, Real estate & rental & leasing	57	-2.1	-0.1	204	-16.3	-2.1	93	-29.9	-2.0	32,496	-11.2	3.1
Professional and Business Services	221	6.0	1.9	1,002	12.5	0.4	399	7.8	-2.3	31,819	2.6	5.3
Sector 54, Professional, scientific, & technical svcs.	142	6.6	2.2	434	9.4	1.0	245	5.4	1.2	41,058	4.7	3.4
Sector 55, Mgt. of companies & enterprises	5	25.0	4.6	21	22.9	9.6	7	64.7	18.5	80,691	9.5	22.7
Sector 56, Administrative & waste services	74	3.8	1.0	547	14.8	-0.3	147	10.1	-7.3	22,652	-0.1	6.0
Education & Health Services	152	6.5	1.7	3,727	2.5	2.5	2,800	5.4	3.2	33,744	2.8	4.5
Sector 61, Educational services	21	3.8	5.3	809	5.2	3.1	466	4.0	1.3	32,434	2.4	4.1
Sector 62, Health care & social assistance	132	6.9	1.2	2,918	1.8	2.4	2,333	5.7	3.7	34,107	2.9	4.5
Leisure and Hospitality	194	1.4	0.1	2,305	-5.0	-1.9	1,309	-3.3	-1.9	17,773	6.3	4.8
Sector 71, Arts, entertainment, & recreation	37	2.1	2.6	400	-5.1	-0.1	192	6.2	3.8	28,898	11.7	6.7
Sector 72, Accommodation & food services	157	1.3	-0.4	1,905	-4.9	-2.2	1,117	-4.7	-2.8	15,436	4.3	3.9
Other Services	130	-2.4	-4.8	499	-6.9	-4.3	302	-7.6	-2.3	19,150	6.3	3.4
Sector 81, Other services, except public admin.	130	-2.4	-4.8	499	-6.9	-4.3	302	-7.6	-2.3	19,150	6.3	3.4
Government Ownership	96	0.5	1.4	2,058	3.6	-1.2	1,277	6.5	0.3	33,685	-1.2	3.6
Federal Government /1	29	1.8	2.6	130	-2.1	-3.4	-	-	-	39,693	2.7	4.5
491 Postal service	23	0.0	2.8	96	-4.9	-1.3	-	-	-	40,891	1.7	2.9
Other Federal Government	6	9.1	1.8	34	6.5	-8.3	-	-	-	36,298	7.9	7.9
State Government	19	0.0	2.2	443	0.8	-6.2	302	0.2	-4.2	41,700	3.1	5.0
Sector 61, Educational Services	2	0.0	0.0	30	2.0	-3.7	29	1.8	2.0	19,864	3.5	14.7
Other State Government	17	0.0	2.5	413	0.7	-6.4	273	0.1	-4.7	43,291	3.1	4.9
Local Government	48	0.0	0.4	1,485	5.1	0.8	975	8.6	1.9	30,769	-2.9	3.5
Sector 61, Educational Services	17	0.0	1.2	1,118	5.4	0.9	861	9.5	2.3	31,641	-4.0	3.2
Other Local Government	31	0.0	0.0	367	4.1	0.6	114	2.5	-0.3	28,117	0.6	4.5

See footnotes at end of table.

Table 3: Continued

Vermont County and Industry Sectors, 2005, Total Covered

annual average with percent change from 2004 and 2000, establishments, employment, women, average wage

County / NAICS Major Industry Group	Establishments			Employment						Average Wage		
	2005	Pct change		2005	Pct change		2005	Pct change		2005	Pct change	
		From 2004	Avg/2 00-05		From 2004	Avg/2 00-05		From 2004	Avg/2 00-05		From 2004	Avg/2 00-05
		%	%		%	%		%	%		%	%
05. Caledonia - Total Covered	1,046	0.4	-0.1	11,593	0.4	0.0	5,788	0.3	0.1	28,773	4.6	4.0
Private Ownership	936	0.4	-0.2	9,624	0.3	-0.1	4,623	0.0	-0.1	28,560	5.1	4.0
Goods Producing - Private	237	0.0	1.8	2,631	-0.6	-2.8	584	1.6	-3.9	33,180	2.0	2.7
Natural Resources and Mining	23	5.7	-1.5	148	-5.6	-8.8	47	-10.1	-15.3	22,550	3.5	0.2
Sector 11, Agriculture, forestry, fishing & hunting	19	7.0	-0.8	133	-6.5	-9.9	46	-8.0	-15.5	20,341	2.4	-1.4
Sector 21, Mining	4	0.0	-4.4	14	3.6	7.8	1	-55.6	0.0	42,971	3.3	4.2
Construction	156	-0.3	3.7	737	-6.2	-0.2	93	9.4	0.4	32,427	3.1	3.4
Sector 23, Construction	156	-0.3	3.7	737	-6.2	-0.2	93	9.4	0.4	32,427	3.1	3.4
Manufacturing	59	-1.3	-1.5	1,746	2.5	-3.3	444	1.4	-2.9	34,398	1.1	2.5
Durable Goods	40	-2.4	-0.5	1,310	6.0	-0.2	281	11.4	1.0	34,639	-1.4	2.2
Non-Durable Goods	19	1.4	-3.4	436	-6.7	-10.0	163	-12.1	-8.0	33,672	8.2	3.0
Service Providing - Private	699	0.5	-0.8	6,993	0.7	1.1	4,039	-0.2	0.6	26,822	6.7	5.2
Trade, Transportation, and Utilities	253	1.3	-0.4	2,357	0.5	0.7	1,043	0.1	0.1	25,752	3.1	4.8
Sector 42, Wholesale trade	43	0.6	0.8	317	4.6	8.9	74	-2.3	5.5	35,622	4.4	-0.8
Sector 44-45, Retail trade	171	1.6	-0.3	1,640	1.1	-0.8	839	-0.7	-0.9	22,659	3.6	6.1
Sector 48-49, Transportation & warehousing	35	0.7	-2.5	350	-5.2	1.6	128	7.6	4.6	26,377	-0.4	2.0
Sector 22, Utilities	4	0.0	0.0	50	1.2	2.0	3	0.0	0.0	60,567	0.1	4.3
Information	25	5.3	6.3	308	15.4	2.6	122	-10.3	-2.8	31,288	-0.9	3.9
Sector 51, Information	25	5.3	6.3	308	15.4	2.6	122	-10.3	-2.8	31,288	-0.9	3.9
Financial Activities	60	0.0	-0.3	414	2.2	0.5	305	5.8	0.3	34,712	4.9	5.9
Sector 52, Finance and Insurance	41	-3.6	-0.1	334	1.2	0.6	260	6.2	0.0	36,898	4.1	5.1
Sector 53, Real estate & rental & leasing	20	8.3	-0.8	79	6.6	-0.1	45	3.4	2.1	25,469	12.5	11.5
Professional and Business Services	109	2.1	0.8	468	9.0	2.1	255	8.2	2.2	43,866	22.2	6.5
Sector 54, Professional, scientific, & technical svcs.	81	7.0	2.6	342	16.6	4.0	194	11.5	3.6	51,636	20.9	6.5
Sector 55, Mgt. of companies & enterprises	-	n	n	-	n	n	-	n	n	-	n	n
Sector 56, Administrative & waste services	n	n	n	n	n	n	n	n	n	n	n	n
Education & Health Services	95	1.9	0.2	2,067	-2.7	2.5	1,477	-4.0	1.1	30,384	9.7	4.9
Sector 61, Educational services	13	0.0	7.6	473	0.5	3.0	247	-5.2	3.5	33,116	1.3	3.0
Sector 62, Health care & social assistance	82	2.2	-0.7	1,595	-3.6	2.3	1,230	-3.7	0.6	29,574	12.6	5.5
Leisure and Hospitality	76	-1.6	-0.1	1,011	1.3	0.4	634	4.8	1.5	12,510	-3.3	4.2
Sector 71, Arts, entertainment, & recreation	9	0.0	0.6	80	11.8	1.1	42	45.2	4.2	19,420	12.8	6.3
Sector 72, Accommodation & food services	67	-1.8	-0.1	931	0.5	0.3	592	2.8	1.3	11,914	-5.5	3.9
Other Services	81	-4.1	-6.7	369	-2.9	-2.4	204	-0.2	-2.3	18,751	0.8	3.8
Sector 81, Other services, except public admin.	81	-4.1	-6.7	369	-2.9	-2.4	204	-0.2	-2.3	18,751	0.8	3.8
Government Ownership	110	0.2	0.9	1,969	1.0	0.5	1,165	1.7	0.6	29,816	2.2	3.9
Federal Government /1	37	1.4	0.0	108	-4.0	-4.5	-	-	-	35,909	-0.7	5.0
491 Postal service	27	0.0	-0.7	87	-2.1	-1.9	-	-	-	34,204	-2.4	2.7
Other Federal Government	10	5.3	2.1	21	-11.2	-12.4	-	-	-	43,166	6.8	12.9
State Government	20	-4.8	4.6	632	2.0	2.2	287	3.7	3.0	37,648	2.2	4.3
Sector 61, Educational Services	3	0.0	0.0	297	3.9	2.5	171	6.5	5.2	30,695	0.6	3.1
Other State Government	17	-5.6	5.5	335	0.3	2.0	116	-0.2	0.1	43,819	3.6	5.2
Local Government	53	1.4	0.3	1,229	1.0	0.1	877	1.0	-0.1	25,253	2.6	3.2
Sector 61, Educational Services	16	0.0	0.0	858	1.3	-0.3	726	3.1	-0.2	24,846	1.8	2.6
Other Local Government	37	2.1	0.4	372	0.2	1.1	151	-7.6	0.0	26,192	4.3	4.5

See footnotes at end of table.

Table 3: Continued

Vermont County and Industry Sectors, 2005, Total Covered

annual average with percent change from 2004 and 2000, establishments, employment, women, average wage

County / NAICS Major Industry Group	Establishments			Employment						Average Wage		
	2005	Pct change		2005	Total		2005	Women		2005	Pct change	
		From 2004	Avg/2 00-05		From 2004	Avg/2 00-05		From 2004	Avg/2 00-05		From 2004	Avg/2 00-05
		%	%		%	%		%	%		%	%
07. Chittenden - Total Covered	5,718	0.7	0.3	94,799	-0.1	-0.1	44,248	0.4	0.5	39,766	3.5	3.0
Private Ownership	5,478	0.7	0.2	80,084	-0.3	-0.5	36,698	0.1	0.4	39,501	3.6	2.8
Goods Producing - Private	862	0.8	0.3	17,811	-2.0	-4.4	3,885	-2.9	-5.7	54,720	3.0	3.1
Natural Resources and Mining	23	3.4	-0.2	180	1.2	-3.2	71	-3.8	-5.6	27,895	3.2	5.8
Sector 11, Agriculture, forestry, fishing & hunting	19	4.1	-1.3	141	3.2	-4.3	67	-0.4	-6.1	20,421	-2.4	4.5
Sector 21, Mining	4	0.0	5.9	39	-5.5	1.9	4	-41.7	11.8	54,916	16.4	4.7
Construction	622	1.8	1.3	5,213	-1.6	-0.3	561	3.9	1.3	41,774	4.0	2.4
Sector 23, Construction	622	1.8	1.3	5,213	-1.6	-0.3	561	3.9	1.3	41,774	4.0	2.4
Manufacturing	217	-2.4	-2.4	12,418	-2.2	-5.8	3,253	-3.9	-6.7	60,544	2.8	3.8
Durable Goods	143	-5.0	-2.3	10,534	-2.1	-6.2	2,619	-4.8	-7.3	64,617	2.9	3.9
Non-Durable Goods	75	3.1	-2.4	1,884	-2.5	-3.6	634	-0.3	-4.0	37,768	2.0	4.0
Service Providing - Private	4,615	0.7	0.2	62,273	0.1	0.8	32,813	0.4	1.3	35,148	4.2	3.4
Trade, Transportation, and Utilities	1,292	-0.8	-0.6	19,025	0.6	1.2	7,663	-1.2	1.1	30,971	2.5	2.7
Sector 42, Wholesale trade	340	0.3	0.9	3,370	-1.6	2.0	803	-0.2	1.4	51,996	6.2	4.4
Sector 44-45, Retail trade	837	-0.4	-1.1	12,918	1.5	1.3	6,190	-0.2	1.4	23,836	0.9	2.9
Sector 48-49, Transportation & warehousing	112	-4.9	-1.2	2,489	-0.6	0.0	606	-11.0	-2.4	34,935	3.1	-0.4
Sector 22, Utilities	3	-35.0	-12.9	248	-1.7	-3.1	65	-6.9	-1.1	77,067	7.6	3.5
Information	153	5.2	2.5	2,371	-2.4	-2.2	1,100	-2.3	-0.8	47,376	1.3	3.4
Sector 51, Information	153	5.2	2.5	2,371	-2.4	-2.2	1,100	-2.3	-0.8	47,376	1.3	3.4
Financial Activities	523	1.3	1.6	4,788	-1.8	0.1	2,828	-3.4	0.2	57,478	7.4	5.8
Sector 52, Finance and Insurance	301	0.3	1.4	3,567	-2.9	0.1	2,321	-4.5	-0.1	66,210	8.6	5.8
Sector 53, Real estate & rental & leasing	221	2.5	1.9	1,221	1.4	0.2	507	1.7	1.5	31,972	3.7	5.4
Professional and Business Services	1,064	2.6	1.5	9,680	1.8	0.1	4,089	0.2	-0.2	45,005	3.8	3.8
Sector 54, Professional, scientific, & technical svcs.	774	3.7	1.2	5,925	0.2	-0.3	2,757	-0.2	0.7	58,921	6.6	4.5
Sector 55, Mgt. of companies & enterprises	n	n	n	n	n	n	n	n	n	n	n	n
Sector 56, Administrative & waste services	n	n	n	n	n	n	n	n	n	n	n	n
Education & Health Services	590	2.0	1.8	14,956	1.4	2.3	11,291	3.0	3.0	37,455	6.2	3.4
Sector 61, Educational services	82	1.5	2.2	2,194	-0.2	-0.9	1,316	1.5	0.4	30,221	7.6	4.6
Sector 62, Health care & social assistance	508	2.1	1.8	12,762	1.7	3.0	9,975	3.3	3.4	38,699	5.9	3.1
Leisure and Hospitality	495	0.5	1.6	8,650	-1.6	0.7	4,378	1.1	1.1	15,948	1.3	2.5
Sector 71, Arts, entertainment, & recreation	109	7.1	2.9	1,595	2.3	1.4	848	6.5	2.3	17,053	-2.8	-0.8
Sector 72, Accommodation & food services	386	-1.2	1.2	7,056	-2.5	0.6	3,531	-0.1	0.9	15,698	2.2	3.4
Other Services	500	-2.2	-4.7	2,802	-4.2	-2.3	1,465	-1.4	-1.7	27,900	0.4	2.6
Sector 81, Other services, except public admin.	500	-2.2	-4.7	2,802	-4.2	-2.3	1,465	-1.4	-1.7	27,900	0.4	2.6
Government Ownership	240	0.1	1.4	14,715	1.4	2.1	7,551	1.8	1.2	41,208	2.6	3.8
Federal Government /1	86	0.6	2.0	1,913	-5.8	-0.1	-	-	-	56,309	5.9	5.4
491 Postal service	33	1.5	1.9	483	-1.1	-2.7	-	-	-	47,130	-4.5	3.3
Other Federal Government	53	0.0	2.0	1,430	-7.3	0.8	-	-	-	59,409	9.2	5.9
State Government	34	-2.1	2.7	5,993	2.8	2.2	3,293	0.8	0.5	43,364	2.5	4.2
Sector 61, Educational Services	2	0.0	0.0	4,208	3.8	2.0	2,298	1.5	-0.3	43,217	2.3	3.9
Other State Government	32	-2.3	2.9	1,784	0.4	2.9	995	-0.9	2.5	43,712	3.1	4.9
Local Government	120	0.4	0.7	6,810	2.3	2.7	4,258	2.6	1.7	35,067	2.1	3.1
Sector 61, Educational Services	23	0.0	0.0	4,503	0.5	2.5	3,394	1.6	1.7	35,440	4.1	2.8
Other Local Government	97	0.5	0.8	2,306	6.2	3.1	864	6.4	1.8	34,339	-1.8	3.6

See footnotes at end of table.

Table 3: Continued

Vermont County and Industry Sectors, 2005, Total Covered

annual average with percent change from 2004 and 2000, establishments, employment, women, average wage

County / NAICS Major Industry Group	Establishments			Employment						Average Wage		
	2005	Pct change		2005	Pct change		2005	Pct change		2005	Pct change	
		From 2004	Avg/2 00-05		From 2004	Avg/2 00-05		From 2004	Avg/2 00-05		From 2004	Avg/2 00-05
		%	%		%	%		%	%		%	%
09. Essex - Total Covered	175	2.9	-0.6	1,596	6.3	-2.3	682	4.8	-0.2	29,141	4.7	3.4
Private Ownership	132	3.5	-1.0	1,174	8.0	-4.0	428	6.9	-1.4	27,553	5.5	1.8
Goods Producing - Private	48	-4.5	-1.3	749	5.6	-7.0	181	-1.5	-5.1	31,591	7.2	2.0
Natural Resources and Mining	16	3.2	0.6	51	8.1	3.8	10	14.3	13.8	22,278	5.1	1.0
Sector 11, Agriculture, forestry, fishing & hunting	16	3.2	0.6	51	8.1	3.8	10	14.3	13.8	22,278	5.1	1.0
Sector 21, Mining	-	-	-	-	-	-	-	-	-	-	-	-
Construction	20	-8.2	-0.3	60	-14.6	-0.4	12	-4.1	8.0	27,092	14.9	1.9
Sector 23, Construction	20	-8.2	-0.3	60	-14.6	-0.4	12	-4.1	8.0	27,092	14.9	1.9
Manufacturing	12	-7.7	-5.0	637	7.8	-8.2	159	-2.2	-6.4	32,761	6.3	2.3
Durable Goods	n	n	n	n	n	n	n	n	n	n	n	n
Non-Durable Goods	n	n	n	n	n	n	n	n	n	n	n	n
Service Providing - Private	85	8.7	-0.8	426	12.4	3.5	247	14.1	2.1	20,451	3.1	6.7
Trade, Transportation, and Utilities	34	15.4	1.2	169	21.4	7.6	75	26.2	5.1	20,775	-1.7	7.0
Sector 42, Wholesale trade	n	-	n	n	-	n	n	-	n	n	-	n
Sector 44-45, Retail trade	18	15.9	2.0	110	34.1	8.7	58	31.4	4.8	14,905	9.1	6.6
Sector 48-49, Transportation & warehousing	n	n	n	n	n	n	n	n	n	n	n	n
Sector 22, Utilities	n	n	-	n	n	-	n	n	-	n	n	-
Information	n	n	n	n	n	n	n	n	n	n	n	n
Sector 51, Information	n	n	n	n	n	n	n	n	n	n	n	n
Financial Activities	n	n	n	n	n	n	n	n	n	n	n	n
Sector 52, Finance and Insurance	n	n	n	n	n	n	n	n	n	n	n	n
Sector 53, Real estate & rental & leasing	-	-	n	-	-	n	-	-	n	-	-	n
Professional and Business Services	9	9.7	-5.0	34	12.7	-5.3	12	2.2	-9.4	38,474	17.8	15.5
Sector 54, Professional, scientific, & technical svcs.	5	17.6	4.6	22	19.2	16.2	6	4.5	0.0	48,494	13.3	17.7
Sector 55, Mgt. of companies & enterprises	-	-	-	-	-	-	-	-	-	-	-	-
Sector 56, Administrative & waste services	4	0.0	-12.9	12	2.2	-19.3	6	0.0	-15.0	19,363	20.8	1.7
Education & Health Services	10	5.6	1.1	65	-1.4	0.9	52	4.0	-1.3	29,397	2.1	6.1
Sector 61, Educational services	-	-	-	-	-	-	-	-	-	-	-	-
Sector 62, Health care & social assistance	10	5.6	1.1	65	-1.4	0.9	52	4.0	-1.3	29,397	2.1	6.1
Leisure and Hospitality	16	-3.0	-0.6	120	13.5	5.5	79	16.6	5.5	10,651	7.2	4.0
Sector 71, Arts, entertainment, & recreation	n	n	n	n	n	n	n	n	n	n	n	n
Sector 72, Accommodation & food services	n	n	n	n	n	n	n	n	n	n	n	n
Other Services	11	5.0	-5.9	24	-1.4	-3.6	16	6.6	-3.6	15,145	9.8	8.0
Sector 81, Other services, except public admin.	11	5.0	-5.9	24	-1.4	-3.6	16	6.6	-3.6	15,145	9.8	8.0
Government Ownership	43	1.2	0.6	422	1.9	3.3	254	1.4	2.0	33,557	3.8	8.1
Federal Government /1	18	5.9	1.1	85	-2.9	6.2	-	-	-	63,454	9.6	7.3
491 Postal service	11	0.0	0.0	24	-7.5	-3.4	-	-	-	31,563	1.2	5.9
Other Federal Government	7	16.7	3.1	62	-1.1	11.9	-	-	-	75,693	9.9	4.3
State Government	2	0.0	14.9	43	2.0	84.5	29	0.9	70.7	42,922	2.0	11.5
Sector 61, Educational Services	-	-	-100.0	-	-	-100.0	-	-	-100.0	-	-	-100.0
Other State Government	2	0.0	-	43	2.0	-	29	0.9	-	42,922	2.0	-
Local Government	23	-2.2	-0.7	294	3.4	0.1	225	1.5	-0.3	23,521	2.4	5.5
Sector 61, Educational Services	9	-5.6	-1.1	201	2.2	-0.1	172	0.9	-0.2	25,378	1.1	4.9
Other Local Government	14	0.0	-0.4	94	6.0	0.3	53	3.4	-0.4	19,543	7.2	7.5

See footnotes at end of table.

Table 3: Continued

Vermont County and Industry Sectors, 2005, Total Covered

annual average with percent change from 2004 and 2000, establishments, employment, women, average wage

County / NAICS Major Industry Group	Establishments			Employment						Average Wage		
	2005	Pct change		2005	Pct change		2005	Pct change		2005	Pct change	
		From	Avg/2		From	Avg/2		From	Avg/2		From	Avg/2
		2004	00-05		2004	00-05		2004	00-05		2004	00-05
%	%	%	%	%	%	%	%	%	%	%		
11. Franklin - Total Covered	1,210	-0.1	-0.1	15,691	1.0	1.1	7,935	3.9	1.1	32,566	3.6	4.3
Private Ownership	1,093	-0.1	-0.3	12,033	-0.1	0.3	6,110	2.7	0.5	30,532	2.6	3.8
Goods Producing - Private	259	-0.4	2.6	3,611	2.7	-0.2	983	12.9	-1.0	39,013	4.8	3.1
Natural Resources and Mining	42	0.0	7.3	331	2.7	6.3	55	6.8	5.8	24,761	5.7	3.4
Sector 11, Agriculture, forestry, fishing & hunting	39	0.0	8.0	309	2.2	7.4	54	5.9	7.8	23,279	6.3	4.6
Sector 21, Mining	3	0.0	0.0	22	10.5	-4.7	1	0.0	-34.0	45,755	-2.5	3.2
Construction	151	0.3	2.1	509	2.1	2.3	66	13.2	5.8	31,003	2.3	3.8
Sector 23, Construction	151	0.3	2.1	509	2.1	2.3	66	13.2	5.8	31,003	2.3	3.8
Manufacturing	66	-2.2	1.1	2,771	2.8	-1.2	862	13.3	-1.8	42,188	5.0	3.4
Durable Goods	29	-3.4	-2.3	728	4.1	-2.2	256	10.8	-1.5	37,765	6.4	4.8
Non-Durable Goods	37	-1.3	4.3	2,043	2.4	-0.8	607	14.4	-1.9	43,764	4.6	2.9
Service Providing - Private	834	0.0	-1.1	8,422	-1.2	0.4	5,127	1.0	0.8	26,896	0.8	4.4
Trade, Transportation, and Utilities	310	-0.2	-1.0	3,243	0.2	-0.6	1,416	5.0	-0.3	26,492	-1.8	4.0
Sector 42, Wholesale trade	60	22.6	2.4	591	6.8	-3.1	225	13.2	-2.6	34,306	1.8	5.4
Sector 44-45, Retail trade	200	-4.5	-1.7	2,192	1.6	0.2	1,033	4.6	-0.8	21,720	-3.7	2.9
Sector 48-49, Transportation & warehousing	n	n	n	n	n	n	n	n	n	n	n	n
Sector 22, Utilities	n	n	n	n	n	n	n	n	n	n	n	n
Information	19	0.0	0.0	638	-11.6	1.6	487	-10.8	1.1	28,951	8.3	5.5
Sector 51, Information	19	0.0	0.0	638	-11.6	1.6	487	-10.8	1.1	28,951	8.3	5.5
Financial Activities	78	3.3	2.6	381	1.1	-2.4	257	1.0	-2.3	33,146	-0.5	1.7
Sector 52, Finance and Insurance	49	2.1	4.2	305	5.9	-2.7	225	5.5	-2.0	36,081	-4.7	2.2
Sector 53, Real estate & rental & leasing	29	5.5	0.2	77	-14.3	-1.2	32	-22.6	-4.6	21,470	15.4	-0.8
Professional and Business Services	108	-2.9	1.4	480	-4.4	3.2	209	-4.5	3.7	35,799	6.6	4.4
Sector 54, Professional, scientific, & technical svcs.	71	-2.8	1.3	254	-3.5	2.4	167	-2.9	5.1	46,309	7.2	3.3
Sector 55, Mgt. of companies & enterprises	-	-	n	-	-	n	-	-	n	-	-	n
Sector 56, Administrative & waste services	n	n	n	n	n	n	n	n	n	n	n	n
Education & Health Services	115	2.2	3.1	2,303	-0.1	3.0	1,904	0.2	3.1	31,732	0.4	4.2
Sector 61, Educational services	n	n	n	n	n	n	n	n	n	n	n	n
Sector 62, Health care & social assistance	n	n	n	n	n	n	n	n	n	n	n	n
Leisure and Hospitality	102	-0.5	2.2	1,031	-0.3	0.5	700	6.7	0.8	11,740	2.3	3.3
Sector 71, Arts, entertainment, & recreation	12	-4.0	3.7	86	-0.8	2.7	52	8.3	6.3	11,044	-9.5	1.3
Sector 72, Accommodation & food services	90	0.0	2.1	946	-0.3	0.3	647	6.6	0.4	11,803	3.4	3.5
Other Services	103	-0.7	-10.2	346	-0.7	-6.0	155	0.5	-10.0	20,644	5.6	7.5
Sector 81, Other services, except public admin.	103	-0.7	-10.2	346	-0.7	-6.0	155	0.5	-10.0	20,644	5.6	7.5
Government Ownership	118	0.0	1.1	3,657	4.8	4.2	1,825	7.9	3.5	39,258	5.5	5.0
Federal Government /1	49	1.0	1.2	1,097	-1.6	7.6	-	-	-	59,469	14.0	5.8
491 Postal service	25	0.0	1.2	98	-1.4	-0.9	-	-	-	39,499	-0.4	2.0
Other Federal Government	24	2.1	1.1	999	-1.7	8.7	-	-	-	61,420	15.0	5.8
State Government	16	0.0	4.2	379	1.5	-0.7	170	1.2	1.6	40,250	2.4	5.6
Sector 61, Educational Services	2	0.0	0.0	56	2.3	-2.7	32	8.5	-0.8	22,292	0.8	13.1
Other State Government	14	0.0	4.9	322	1.4	-0.3	138	-0.4	2.2	43,394	2.6	4.8
Local Government	53	-0.9	0.2	2,182	9.0	3.7	1,655	8.7	3.7	28,928	1.6	3.1
Sector 61, Educational Services	20	2.6	0.5	1,796	10.6	4.0	1,521	9.5	3.8	29,245	0.7	2.7
Other Local Government	33	-2.9	0.0	386	2.4	2.3	134	0.2	3.0	27,453	5.2	4.4

See footnotes at end of table.

Table 3: Continued

Vermont County and Industry Sectors, 2005, Total Covered

annual average with percent change from 2004 and 2000, establishments, employment, women, average wage

County / NAICS Major Industry Group	Establishments			Employment						Average Wage		
	2005	Pct change		2005	Pct change		2005	Pct change		2005	Pct change	
		From 2004	Avg/2 00-05		From 2004	Avg/2 00-05		From 2004	Avg/2 00-05		From 2004	Avg/2 00-05
		%	%		%	%		%	%		%	%
13. Grand Isle - Total Covered	230	4.4	3.1	1,184	1.7	3.5	606	1.7	3.5	24,846	2.3	3.8
Private Ownership	198	5.2	3.4	848	0.3	3.6	375	0.0	2.5	23,724	3.6	4.8
Goods Producing - Private	61	4.7	5.4	266	5.0	11.2	60	15.5	11.9	31,178	-5.1	3.9
Natural Resources and Mining	5	-9.1	0.0	28	-14.5	5.7	10	-11.1	9.0	19,800	5.9	2.8
Sector 11, Agriculture, forestry, fishing & hunting	n	n	n	n	n	n	n	n	n	n	n	n
Sector 21, Mining	n	n	n	n	n	n	n	n	n	n	n	n
Construction	50	8.2	7.4	199	6.8	13.8	24	11.8	14.6	34,751	-5.8	4.7
Sector 23, Construction	50	8.2	7.4	199	6.8	13.8	24	11.8	14.6	34,751	-5.8	4.7
Manufacturing	6	-7.7	-3.0	39	14.2	4.5	26	35.1	10.9	21,105	-13.7	-3.9
Durable Goods	n	n	n	n	n	n	n	n	n	n	n	n
Non-Durable Goods	n	n	n	n	n	n	n	n	n	n	n	n
Service Providing - Private	137	5.4	2.6	581	-1.7	0.9	315	-2.5	1.2	20,312	9.0	3.8
Trade, Transportation, and Utilities	47	16.9	4.0	252	2.4	2.7	118	0.6	3.6	22,932	15.3	4.3
Sector 42, Wholesale trade	n	n	n	n	n	n	n	n	n	n	n	n
Sector 44-45, Retail trade	32	4.1	2.9	188	4.8	3.8	98	-1.0	2.2	17,685	7.1	3.2
Sector 48-49, Transportation & warehousing	n	n	n	n	n	n	n	n	n	n	n	n
Sector 22, Utilities	n	n	-	n	n	-	n	n	-	n	n	-
Information	n	n	n	n	n	n	n	n	n	n	n	n
Sector 51, Information	n	n	n	n	n	n	n	n	n	n	n	n
Financial Activities	n	n	n	n	n	n	n	n	n	n	n	n
Sector 52, Finance and Insurance	n	n	n	n	n	n	n	n	n	n	n	n
Sector 53, Real estate & rental & leasing	n	n	n	n	n	n	n	n	n	n	n	n
Professional and Business Services	26	-8.8	10.7	50	-11.6	2.9	25	-21.0	2.6	31,295	7.1	3.0
Sector 54, Professional, scientific, & technical svcs.	16	-16.0	6.5	23	-8.7	2.5	16	-11.4	10.3	36,618	4.2	-4.7
Sector 55, Mgt. of companies & enterprises	-	-	-	-	-	-	-	-	-	-	-	-
Sector 56, Administrative & waste services	10	5.3	20.1	27	-13.9	3.2	9	-33.3	-5.6	26,836	9.4	21.2
Education & Health Services	12	0.0	5.3	51	-6.6	-1.1	48	-0.5	1.4	18,712	11.7	5.7
Sector 61, Educational services	n	n	n	n	n	n	n	n	n	n	n	n
Sector 62, Health care & social assistance	n	n	n	n	n	n	n	n	n	n	n	n
Leisure and Hospitality	29	4.5	2.2	168	-1.7	0.5	85	-3.4	0.2	13,416	2.3	0.6
Sector 71, Arts, entertainment, & recreation	5	0.0	0.0	41	24.6	16.3	14	12.2	13.7	16,992	18.8	1.6
Sector 72, Accommodation & food services	24	5.6	2.7	127	-7.9	-2.5	71	-6.0	-1.5	12,266	-4.4	-0.6
Other Services	11	10.0	-11.7	26	-11.9	-10.2	16	0.0	-9.9	18,051	1.2	4.6
Sector 81, Other services, except public admin.	11	10.0	-11.7	26	-11.9	-10.2	16	0.0	-9.9	18,051	1.2	4.6
Government Ownership	32	0.0	1.3	336	5.2	3.4	231	4.6	5.2	27,674	-1.1	1.9
Federal Government /1	12	0.0	0.0	25	5.2	-1.8	-	-	-	38,802	-14.4	5.9
491 Postal service	10	0.0	0.0	22	14.2	1.0	-	-	-	33,624	-10.1	2.6
Other Federal Government	2	0.0	0.0	3	-33.3	-14.1	-	-	-	77,058	-3.1	22.9
State Government	4	0.0	5.9	40	0.4	3.8	8	0.0	21.7	42,596	3.6	4.9
Sector 61, Educational Services	-	-	-	-	-	-	-	-	-	-	-	-
Other State Government	4	0.0	5.9	40	0.4	3.8	8	0.0	21.7	42,596	3.6	4.9
Local Government	16	0.0	1.3	271	6.0	3.9	223	4.8	4.8	24,437	0.5	0.8
Sector 61, Educational Services	6	0.0	0.0	212	6.6	4.8	196	5.7	5.5	26,187	0.3	-0.6
Other Local Government	10	0.0	2.1	59	3.8	1.2	27	-0.9	0.6	18,129	0.5	6.9

See footnotes at end of table.

Table 3: Continued

Vermont County and Industry Sectors, 2005, Total Covered

annual average with percent change from 2004 and 2000, establishments, employment, women, average wage

County / NAICS Major Industry Group	Establishments			Employment						Average Wage		
	2005	Pct change		2005	Pct change		2005	Pct change		2005	Pct change	
		From 2004	Avg/2 00-05		From 2004	Avg/2 00-05		From 2004	Avg/2 00-05		From 2004	Avg/2 00-05
		%	%		%	%		%	%		%	%
15. Lamoille - Total Covered	1,092	3.5	1.6	11,016	3.6	0.8	5,916	1.7	1.1	27,638	2.4	4.8
Private Ownership	1,018	3.7	1.7	9,366	3.8	0.6	4,885	1.9	0.7	26,976	2.6	5.1
Goods Producing - Private	242	2.7	3.2	1,639	7.3	2.0	407	2.9	0.3	31,887	2.4	2.9
Natural Resources and Mining	16	-4.5	7.8	66	-0.6	10.0	24	8.0	18.1	18,220	5.2	-0.5
Sector 11, Agriculture, forestry, fishing & hunting	n	n	n	n	n	n	n	n	n	n	n	n
Sector 21, Mining	n	n	n	n	n	n	n	n	n	n	n	n
Construction	174	4.3	4.6	913	13.7	5.6	91	4.0	4.0	32,472	4.2	3.5
Sector 23, Construction	174	4.3	4.6	913	13.7	5.6	91	4.0	4.0	32,472	4.2	3.5
Manufacturing	52	-0.5	-1.9	660	0.3	-2.6	293	2.2	-1.5	32,442	-0.2	2.7
Durable Goods	34	-3.6	-2.1	447	-0.5	-2.6	133	2.3	-0.7	37,455	1.3	2.8
Non-Durable Goods	18	5.9	-1.6	213	2.0	-2.6	160	2.1	-2.2	21,917	-4.5	2.1
Service Providing - Private	776	4.0	1.3	7,727	3.1	0.4	4,478	1.8	0.8	25,935	2.5	5.6
Trade, Transportation, and Utilities	228	0.9	0.0	1,773	0.6	-0.6	839	-1.3	-1.2	25,785	1.5	4.7
Sector 42, Wholesale trade	n	n	n	n	n	n	n	n	n	n	n	n
Sector 44-45, Retail trade	171	3.0	-0.2	1,501	0.4	-1.1	757	-2.9	-1.6	23,356	0.3	4.3
Sector 48-49, Transportation & warehousing	25	-4.9	0.2	107	-9.6	-0.4	21	7.6	-1.1	19,619	3.6	5.0
Sector 22, Utilities	n	n	n	n	n	n	n	n	n	n	n	n
Information	17	-2.9	4.7	106	6.8	2.9	51	4.6	2.0	31,541	-14.8	5.5
Sector 51, Information	17	-2.9	4.7	106	6.8	2.9	51	4.6	2.0	31,541	-14.8	5.5
Financial Activities	64	13.3	4.9	365	13.8	6.5	240	10.7	4.7	35,918	0.4	6.3
Sector 52, Finance and Insurance	26	8.3	1.0	212	4.6	2.4	167	7.2	1.5	37,777	-2.7	4.9
Sector 53, Real estate & rental & leasing	38	16.9	8.1	153	29.5	14.4	74	19.4	15.6	33,349	9.1	12.1
Professional and Business Services	159	7.1	3.1	574	3.4	-0.6	248	0.8	0.3	36,004	2.4	7.7
Sector 54, Professional, scientific, & technical svcs.	106	11.8	1.3	298	1.6	-0.4	166	0.0	2.6	40,248	1.5	4.8
Sector 55, Mgt. of companies & enterprises	-	-	-	-	-	-	-	-	-	-	-	-
Sector 56, Administrative & waste services	53	-1.4	7.6	275	5.5	-0.9	82	2.5	-3.6	31,409	4.5	12.3
Education & Health Services	93	4.2	3.4	1,555	4.5	2.1	1,200	2.8	1.8	31,459	1.9	6.0
Sector 61, Educational services	17	-9.2	2.2	161	-14.0	-0.1	105	-15.8	1.8	20,507	0.3	5.1
Sector 62, Health care & social assistance	76	7.8	3.7	1,394	7.2	2.4	1,095	5.1	1.8	32,723	1.1	6.0
Leisure and Hospitality	126	3.1	0.3	3,002	2.6	-0.3	1,714	1.6	0.8	20,090	4.3	4.6
Sector 71, Arts, entertainment, & recreation	24	20.3	6.3	123	-1.4	11.5	56	-14.5	13.1	21,918	21.0	-5.9
Sector 72, Accommodation & food services	103	-0.2	-0.8	2,880	2.7	-0.7	1,658	2.3	0.5	20,012	3.6	5.0
Other Services	89	3.2	-1.7	352	3.4	-0.4	186	1.8	-0.9	23,700	2.2	4.7
Sector 81, Other services, except public admin.	89	3.2	-1.7	352	3.4	-0.4	186	1.8	-0.9	23,700	2.2	4.7
Government Ownership	74	1.7	0.0	1,650	2.4	1.6	1,031	0.5	2.9	31,395	1.4	3.5
Federal Government /1	27	4.9	-0.9	72	-4.4	-4.9	-	-	-	37,091	-2.0	4.9
491 Postal service	20	0.0	0.0	62	-2.1	-2.0	-	-	-	38,310	-2.8	3.7
Other Federal Government	7	22.7	-3.3	10	-16.3	-15.6	-	-	-	29,729	-0.1	7.1
State Government	13	0.0	3.4	420	3.0	0.7	262	-2.0	4.2	34,341	3.4	4.6
Sector 61, Educational Services	3	0.0	0.0	306	3.4	-0.3	196	-2.6	4.6	31,342	4.2	4.3
Other State Government	10	0.0	4.6	115	1.9	3.5	66	0.0	3.1	42,353	2.1	4.5
Local Government	34	0.0	-0.4	1,157	2.6	2.5	769	1.4	2.5	29,969	0.9	3.1
Sector 61, Educational Services	13	0.0	0.0	837	2.4	2.2	659	2.2	2.4	29,624	1.0	3.0
Other Local Government	21	0.0	-0.7	321	3.0	3.3	110	-3.1	3.4	30,870	0.9	3.4

See footnotes at end of table.

Table 3: Continued

Vermont County and Industry Sectors, 2005, Total Covered

annual average with percent change from 2004 and 2000, establishments, employment, women, average wage

County / NAICS Major Industry Group	Establishments			Employment						Average Wage		
	2005	Pct change		2005	Pct change		2005	Pct change		2005	Pct change	
		From 2004	Avg/2 00-05		From 2004	Avg/2 00-05		From 2004	Avg/2 00-05		From 2004	Avg/2 00-05
		%	%		%	%		%	%		%	%
17. Orange - Total Covered	862	0.3	1.1	7,889	0.5	0.1	4,059	1.0	0.1	28,662	4.2	4.3
Private Ownership	769	0.6	1.2	5,963	0.9	0.1	2,849	2.4	0.2	28,214	3.3	4.2
Goods Producing - Private	234	2.3	3.6	1,658	3.7	-0.5	345	9.6	-2.1	30,631	3.7	3.0
Natural Resources and Mining	33	-4.4	4.1	169	3.5	9.4	47	11.2	13.6	27,143	5.3	2.9
Sector 11, Agriculture, forestry, fishing & hunting	n	n	n	n	n	n	n	n	n	n	n	n
Sector 21, Mining	n	n	n	n	n	n	n	n	n	n	n	n
Construction	149	6.2	3.7	634	7.9	5.9	72	4.0	5.8	31,722	6.0	4.0
Sector 23, Construction	149	6.2	3.7	634	7.9	5.9	72	4.0	5.8	31,722	6.0	4.0
Manufacturing	52	-3.7	2.7	854	0.8	-5.2	226	11.2	-5.9	30,511	1.7	2.7
Durable Goods	31	-5.4	2.3	638	-3.4	-6.1	150	7.5	-6.4	30,168	0.7	2.0
Non-Durable Goods	21	-1.2	3.4	216	15.4	-1.9	76	19.4	-4.6	31,526	4.6	5.0
Service Providing - Private	536	-0.1	0.3	4,306	-0.1	0.3	2,504	1.5	0.5	27,283	3.0	4.8
Trade, Transportation, and Utilities	157	-5.0	1.0	1,362	-3.3	1.0	600	-2.5	1.7	28,084	5.1	4.5
Sector 42, Wholesale trade	33	-12.6	3.7	249	-13.7	-1.1	122	-7.6	0.6	37,762	8.5	6.9
Sector 44-45, Retail trade	102	-2.6	1.0	971	0.5	1.4	458	-0.3	2.2	23,817	5.7	3.6
Sector 48-49, Transportation & warehousing	n	n	n	n	n	n	n	n	n	n	n	n
Sector 22, Utilities	n	n	n	n	n	n	n	n	n	n	n	n
Information	17	-14.1	2.6	88	-8.7	2.7	54	-8.1	2.8	22,901	-8.7	3.2
Sector 51, Information	17	-14.1	2.6	88	-8.7	2.7	54	-8.1	2.8	22,901	-8.7	3.2
Financial Activities	48	6.6	1.9	245	7.4	-0.1	177	9.3	-0.6	34,938	-2.7	7.4
Sector 52, Finance and Insurance	29	0.0	0.5	183	3.4	0.0	145	8.0	-0.8	35,831	-1.7	5.0
Sector 53, Real estate & rental & leasing	19	18.8	4.2	63	20.7	-0.4	32	15.5	0.5	32,339	-5.2	18.4
Professional and Business Services	115	4.8	2.4	467	14.2	3.8	234	15.4	3.0	31,205	-2.6	2.5
Sector 54, Professional, scientific, & technical svcs.	80	3.6	3.1	302	18.0	4.9	153	19.8	6.8	35,662	-7.7	1.6
Sector 55, Mgt. of companies & enterprises	-	-	-	-	-	-	-	-	-	-	-	-
Sector 56, Administrative & waste services	35	7.7	0.9	165	7.8	2.1	82	7.9	-2.3	23,059	9.6	3.6
Education & Health Services	78	0.3	2.3	1,250	0.1	1.8	965	2.8	1.4	31,321	3.1	4.0
Sector 61, Educational services	11	-2.2	1.4	145	-0.2	1.8	92	0.0	1.4	34,514	0.8	5.5
Sector 62, Health care & social assistance	67	0.8	2.4	1,105	0.1	1.8	873	3.1	1.4	30,902	3.5	3.7
Leisure and Hospitality	58	-4.9	-1.7	695	-5.4	-2.7	387	-5.3	-0.5	14,483	4.1	4.6
Sector 71, Arts, entertainment, & recreation	14	3.6	5.3	82	15.6	6.4	34	5.4	12.3	10,835	14.4	0.4
Sector 72, Accommodation & food services	44	-7.4	-3.5	613	-7.7	-3.6	353	-6.2	-1.4	14,972	4.0	5.2
Other Services	63	8.6	-5.6	198	6.9	-6.8	87	8.1	-11.2	24,427	-2.0	5.3
Sector 81, Other services, except public admin.	63	8.6	-5.6	198	6.9	-6.8	87	8.1	-11.2	24,427	-2.0	5.3
Government Ownership	93	-2.1	0.3	1,925	-0.6	0.1	1,210	-2.1	-0.1	30,050	6.7	4.6
Federal Government /1	41	-2.4	-1.2	97	0.9	-4.5	-	-	-	30,223	-4.9	3.1
491 Postal service	33	-2.9	0.0	93	1.7	-0.2	-	-	-	29,884	-5.4	1.8
Other Federal Government	8	0.0	-5.3	4	-16.7	-33.2	-	-	-	38,650	8.5	12.6
State Government	10	0.0	10.8	468	1.1	2.7	205	-0.6	3.4	36,650	3.8	4.0
Sector 61, Educational Services	1	0.0	0.0	376	1.1	2.1	194	-0.6	4.8	35,043	4.1	3.6
Other State Government	9	0.0	12.5	92	1.0	5.5	11	0.0	-11.0	43,213	2.9	4.8
Local Government	42	-2.3	-0.1	1,361	-1.2	-0.4	1,006	-2.4	-0.7	27,768	8.9	4.8
Sector 61, Educational Services	17	0.0	-1.1	1,060	-1.2	-1.0	861	-1.7	-1.3	29,748	9.7	5.2
Other Local Government	25	-3.8	0.6	301	-1.4	1.8	145	-6.6	2.7	20,786	5.0	3.9

See footnotes at end of table.

Table 3: Continued

Vermont County and Industry Sectors, 2005, Total Covered

annual average with percent change from 2004 and 2000, establishments, employment, women, average wage

County / NAICS Major Industry Group	Establishments			Employment						Average Wage		
	2005	Pct change		2005	Pct change		2005	Pct change		2005	Pct change	
		From 2004	Avg/2 00-05		From 2004	Avg/2 00-05		From 2004	Avg/2 00-05		From 2004	Avg/2 00-05
		%	%		%	%		%	%		%	%
19. Orleans - Total Covered	973	3.6	1.4	9,919	0.7	1.0	5,153	0.1	0.9	27,613	3.7	3.6
Private Ownership	862	4.1	1.3	7,865	-0.4	0.7	4,028	-0.8	0.9	26,431	4.4	3.2
Goods Producing - Private	219	6.5	3.2	2,389	-0.7	-1.2	662	-3.9	-1.7	30,683	4.1	1.8
Natural Resources and Mining	21	0.0	2.0	159	8.9	6.1	28	20.2	4.2	23,441	3.2	2.8
Sector 11, Agriculture, forestry, fishing & hunting	21	0.0	2.0	159	8.9	6.1	28	20.2	4.2	23,441	3.2	2.8
Sector 21, Mining	-	-	-	-	-	-	-	-	-	-	-	-
Construction	151	7.7	5.3	682	4.7	5.2	65	0.8	3.0	31,190	5.2	5.1
Sector 23, Construction	151	7.7	5.3	682	4.7	5.2	65	0.8	3.0	31,190	5.2	5.1
Manufacturing	47	5.6	-1.8	1,548	-3.8	-4.0	569	-5.3	-2.4	31,203	4.0	1.1
Durable Goods	27	0.9	-4.1	1,283	-4.8	-4.2	423	-6.6	-1.6	30,178	3.6	0.1
Non-Durable Goods	20	12.9	1.9	264	1.8	-2.8	146	-1.5	-4.4	36,180	4.9	5.9
Service Providing - Private	643	3.3	0.7	5,476	-0.3	1.6	3,367	-0.1	1.4	24,577	4.6	4.3
Trade, Transportation, and Utilities	245	2.4	0.6	1,784	0.2	-0.3	788	0.6	-1.1	24,907	2.7	3.8
Sector 42, Wholesale trade	n	n	n	n	n	n	n	n	n	n	n	n
Sector 44-45, Retail trade	155	2.1	0.2	1,298	1.9	0.9	650	0.1	-1.1	21,877	5.2	4.7
Sector 48-49, Transportation & warehousing	n	n	n	n	n	n	n	n	n	n	n	n
Sector 22, Utilities	n	n	n	n	n	n	n	n	n	n	n	n
Information	17	6.2	3.2	100	7.3	-0.3	59	14.7	3.0	33,267	-1.6	5.5
Sector 51, Information	17	6.2	3.2	100	7.3	-0.3	59	14.7	3.0	33,267	-1.6	5.5
Financial Activities	56	-1.7	5.4	310	1.0	5.0	233	6.2	4.6	32,137	5.9	6.1
Sector 52, Finance and Insurance	36	-0.7	2.4	243	1.4	2.2	200	7.5	2.8	33,223	3.8	6.2
Sector 53, Real estate & rental & leasing	20	-3.6	12.5	67	-0.6	22.3	33	-1.5	21.9	28,187	15.8	10.0
Professional and Business Services	88	6.7	4.3	319	14.8	9.6	191	16.0	12.2	25,137	1.0	0.6
Sector 54, Professional, scientific, & technical svcs.	56	3.7	2.9	165	1.0	3.6	99	-7.1	2.3	32,574	14.1	4.0
Sector 55, Mgt. of companies & enterprises	-	-	-	-	-	-	-	-	-	-	-	-
Sector 56, Administrative & waste services	32	12.3	7.1	153	34.6	19.7	92	57.7	36.1	17,123	-12.7	-2.0
Education & Health Services	77	9.6	4.0	1,750	-6.3	2.5	1,403	-5.8	1.9	28,165	10.0	3.9
Sector 61, Educational services	11	12.5	7.1	175	-3.4	1.2	118	-0.8	1.1	19,795	10.9	4.3
Sector 62, Health care & social assistance	66	9.1	3.5	1,575	-6.7	2.6	1,285	-6.2	2.0	29,096	10.0	3.8
Leisure and Hospitality	81	0.0	1.6	930	1.5	2.3	549	1.4	1.9	14,736	0.4	5.8
Sector 71, Arts, entertainment, & recreation	15	-1.6	-0.3	86	-2.7	6.4	35	-0.7	6.3	20,825	-18.3	5.5
Sector 72, Accommodation & food services	66	0.4	2.0	845	1.9	2.0	514	1.6	1.6	14,119	4.4	5.6
Other Services	80	3.2	-7.1	283	13.0	-2.1	146	19.0	-4.1	20,651	-1.2	7.3
Sector 81, Other services, except public admin.	80	3.2	-7.1	283	13.0	-2.1	146	19.0	-4.1	20,651	-1.2	7.3
Government Ownership	111	0.0	1.6	2,054	5.3	2.3	1,125	3.2	1.0	32,139	0.5	5.1
Federal Government /1	41	0.0	2.4	248	0.6	2.6	-	-	-	57,252	10.3	7.9
491 Postal service	25	0.0	1.7	83	-0.6	-1.0	-	-	-	36,522	-3.3	3.1
Other Federal Government	16	0.0	3.5	166	1.3	4.8	-	-	-	67,596	14.4	8.8
State Government	15	0.0	6.4	361	1.1	1.3	135	0.0	-1.0	39,162	2.5	5.1
Sector 61, Educational Services	2	0.0	0.0	39	-0.2	-3.7	27	-1.8	-3.4	17,960	-2.6	13.9
Other State Government	13	0.0	7.6	323	1.3	2.0	109	0.5	-0.4	41,692	2.7	4.2
Local Government	55	0.0	0.0	1,444	7.3	2.5	989	3.6	1.4	26,064	-2.3	4.3
Sector 61, Educational Services	24	0.0	0.0	1,188	7.3	2.4	916	4.4	1.3	27,715	-2.3	4.8
Other Local Government	31	0.0	0.0	256	7.1	3.0	73	-5.8	2.1	18,398	-2.3	1.2

See footnotes at end of table.

Table 3: Continued

Vermont County and Industry Sectors, 2005, Total Covered

annual average with percent change from 2004 and 2000, establishments, employment, women, average wage

County / NAICS Major Industry Group	Establishments			Employment						Average Wage			
	2005	Pct change		2005	Total			Women			2005	Pct change	
		From 2004	Avg/2 00-05		From 2004	Avg/2 00-05	From 2004	Avg/2 00-05	From 2004	Avg/2 00-05			
		%	%		%	%	%	%	%	%			
21. Rutland - Total Covered	2,486	0.5	0.3	29,693	1.3	0.5	14,407	2.0	0.9	32,194	2.4	3.9	
Private Ownership	2,316	0.6	0.2	25,205	1.4	0.4	11,883	1.8	0.7	31,921	2.2	3.9	
Goods Producing - Private	508	3.1	2.5	6,086	0.6	-0.6	1,289	3.6	-0.8	40,440	1.9	3.8	
Natural Resources and Mining	44	-9.3	0.2	431	-13.7	-6.2	69	-15.1	-6.3	40,098	8.9	4.6	
Sector 11, Agriculture, forestry, fishing & hunting	19	-9.5	3.5	53	-23.5	-0.3	15	-29.3	4.7	17,097	-3.5	3.7	
Sector 21, Mining	25	-9.1	-1.9	379	-12.2	-6.9	54	-10.3	-8.3	43,294	8.6	5.1	
Construction	340	6.3	4.4	1,767	1.6	5.2	194	17.9	4.9	33,032	0.9	3.0	
Sector 23, Construction	340	6.3	4.4	1,767	1.6	5.2	194	17.9	4.9	33,032	0.9	3.0	
Manufacturing	124	-0.2	-1.3	3,888	1.9	-2.0	1,026	2.8	-1.3	43,844	1.4	4.4	
Durable Goods	83	1.5	-0.1	3,476	5.2	-1.7	867	4.4	-0.9	45,544	1.2	4.4	
Non-Durable Goods	41	-3.5	-3.5	412	-18.9	-4.7	160	-5.1	-3.3	29,505	-7.4	2.5	
Service Providing - Private	1,809	-0.1	-0.3	19,120	1.6	0.7	10,595	1.6	0.9	29,210	2.4	4.1	
Trade, Transportation, and Utilities	594	-2.3	-1.1	6,448	0.2	1.0	2,899	0.3	1.6	29,798	4.6	4.0	
Sector 42, Wholesale trade	108	-6.5	-1.0	800	-3.3	-3.3	155	-7.0	-2.8	39,950	8.7	4.1	
Sector 44-45, Retail trade	428	-0.8	-1.2	4,400	0.5	1.1	2,203	-1.3	0.4	23,337	2.6	4.4	
Sector 48-49, Transportation & warehousing	53	-4.9	-0.6	760	1.9	6.7	370	13.6	16.0	26,750	4.4	0.0	
Sector 22, Utilities	5	0.0	0.0	488	1.1	0.1	171	2.9	0.0	76,135	7.2	7.1	
Information	37	-3.9	-0.8	472	3.7	0.1	208	5.0	1.1	31,973	1.7	2.6	
Sector 51, Information	37	-3.9	-0.8	472	3.7	0.1	208	5.0	1.1	31,973	1.7	2.6	
Financial Activities	170	4.3	1.2	964	0.3	-0.2	601	2.7	0.9	37,666	-0.7	4.0	
Sector 52, Finance and Insurance	88	7.6	0.4	621	0.5	0.9	447	4.2	1.9	44,123	-1.3	4.7	
Sector 53, Real estate & rental & leasing	82	0.9	2.2	343	-0.1	-2.0	154	-1.4	-1.6	25,982	0.9	1.1	
Professional and Business Services	333	0.8	1.3	2,097	5.0	0.3	989	2.7	-0.2	39,299	0.6	6.0	
Sector 54, Professional, scientific, & technical svcs.	n	n	n	n	n	n	n	n	n	n	n	n	
Sector 55, Mgt. of companies & enterprises	n	n	n	n	n	n	n	n	n	n	n	n	
Sector 56, Administrative & waste services	n	n	n	n	n	n	n	n	n	n	n	n	
Education & Health Services	200	0.3	1.4	4,366	2.3	2.1	3,383	1.6	1.7	34,847	1.7	4.2	
Sector 61, Educational services	19	-2.5	-0.5	369	4.0	2.3	216	2.6	1.5	26,662	1.5	1.3	
Sector 62, Health care & social assistance	181	0.6	1.6	3,997	2.2	2.0	3,168	1.5	1.7	35,603	1.8	4.4	
Leisure and Hospitality	265	1.9	1.0	3,879	2.2	-0.1	2,104	2.9	-0.3	15,843	1.2	1.9	
Sector 71, Arts, entertainment, & recreation	42	4.3	2.4	304	17.0	9.7	118	20.8	8.7	12,164	-5.9	-3.9	
Sector 72, Accommodation & food services	223	1.5	0.7	3,576	1.1	-0.7	1,987	2.0	-0.7	16,156	1.9	2.3	
Other Services	209	-0.6	-4.3	895	-0.7	-1.4	410	-1.6	-1.1	21,203	1.0	2.6	
Sector 81, Other services, except public admin.	209	-0.6	-4.3	895	-0.7	-1.4	410	-1.6	-1.1	21,203	1.0	2.6	
Government Ownership	170	-0.1	0.8	4,488	0.7	1.3	2,524	2.6	1.7	33,724	3.6	3.7	
Federal Government /1	61	0.4	-0.1	377	-0.2	-2.4	-	-	-	49,161	4.0	5.4	
491 Postal service	44	0.6	-0.3	197	-0.8	-1.4	-	-	-	39,411	-3.7	2.9	
Other Federal Government	17	0.0	0.6	179	0.4	-3.4	-	-	-	59,904	10.1	7.8	
State Government	29	0.0	3.9	1,054	3.1	2.5	465	7.1	3.6	38,971	1.9	4.5	
Sector 61, Educational Services	3	0.0	0.0	383	7.2	2.8	231	16.0	5.8	31,069	0.8	3.4	
Other State Government	26	0.0	4.4	671	1.0	2.3	235	-0.4	1.7	43,477	3.0	5.0	
Local Government	80	-0.6	0.4	3,057	0.1	1.4	2,059	1.6	1.3	30,013	4.1	3.2	
Sector 61, Educational Services	31	0.0	0.0	2,248	-0.1	1.3	1,776	1.2	1.3	31,267	4.2	3.1	
Other Local Government	49	-1.0	0.6	809	0.6	1.7	283	4.4	1.9	26,530	3.8	3.5	

See footnotes at end of table.

Table 3: Continued

Vermont County and Industry Sectors, 2005, Total Covered

annual average with percent change from 2004 and 2000, establishments, employment, women, average wage

County / NAICS Major Industry Group	Establishments			Employment						Average Wage		
	2005	Pct change		Total			Women			2005	Pct change	
		From 2004	Avg/2	2005	From 2004	Avg/2	2005	From 2004	Avg/2			
		%	%	%	%	%	%	%	%			
23. Washington - Total Covered	2,541	0.6	0.5	32,643	1.1	0.3	16,141	0.7	0.1	34,530	3.6	4.1
Private Ownership	2,303	0.7	0.4	24,599	1.1	0.0	11,906	0.8	0.2	32,966	4.1	3.8
Goods Producing - Private	433	0.3	2.0	4,414	-2.4	-3.6	1,048	-3.2	-3.7	37,259	5.6	2.2
Natural Resources and Mining	27	3.8	3.9	250	5.4	0.3	48	19.1	7.4	29,969	1.5	-0.6
Sector 11, Agriculture, forestry, fishing & hunting	19	4.1	4.5	104	5.9	2.2	42	23.9	9.4	24,845	17.7	5.1
Sector 21, Mining	8	3.2	2.7	146	5.0	-1.0	7	-3.6	-1.4	33,626	-5.2	-2.4
Construction	262	0.9	4.6	1,350	0.2	2.5	158	-0.3	2.0	34,596	6.2	4.1
Sector 23, Construction	262	0.9	4.6	1,350	0.2	2.5	158	-0.3	2.0	34,596	6.2	4.1
Manufacturing	144	-1.2	-2.2	2,814	-4.2	-6.2	843	-4.8	-5.0	39,185	5.9	2.2
Durable Goods	102	0.0	-1.5	1,272	-0.4	-10.6	246	-3.7	-12.2	44,091	4.5	3.7
Non-Durable Goods	42	-4.0	-3.7	1,542	-7.1	-1.2	597	-5.2	-0.6	35,138	6.4	1.3
Service Providing - Private	1,871	0.8	0.0	20,185	1.9	0.9	10,858	1.3	0.6	32,027	3.9	4.4
Trade, Transportation, and Utilities	553	1.3	-0.1	5,774	3.4	0.4	2,270	3.7	-0.2	29,492	5.9	4.3
Sector 42, Wholesale trade	122	-0.6	3.9	959	3.5	-0.3	324	9.2	1.7	46,190	10.4	4.5
Sector 44-45, Retail trade	377	-0.2	-1.4	4,077	0.4	0.2	1,790	0.3	-0.6	24,380	4.1	4.6
Sector 48-49, Transportation & warehousing	45	18.3	0.9	634	25.2	4.0	133	57.4	3.4	33,778	-0.8	4.1
Sector 22, Utilities	8	29.2	2.1	105	14.3	-2.9	23	6.9	-5.7	49,545	1.5	0.4
Information	51	-6.4	-0.5	600	-1.7	-2.7	253	-3.7	-2.4	35,046	-3.8	1.1
Sector 51, Information	51	-6.4	-0.5	600	-1.7	-2.7	253	-3.7	-2.4	35,046	-3.8	1.1
Financial Activities	174	2.5	1.7	2,500	-1.0	-0.4	1,636	-0.3	-0.6	52,718	6.7	4.8
Sector 52, Finance and Insurance	109	5.1	2.2	2,186	-0.7	-0.8	1,497	-0.7	-0.9	56,652	6.5	5.1
Sector 53, Real estate & rental & leasing	65	-1.5	1.0	313	-2.8	2.8	139	3.4	3.3	25,281	8.2	4.0
Professional and Business Services	397	3.7	1.9	1,905	3.0	1.3	841	4.1	0.3	40,941	4.1	5.8
Sector 54, Professional, scientific, & technical svcs.	298	4.9	2.7	1,238	1.8	3.0	559	0.3	1.9	49,592	5.5	5.3
Sector 55, Mgt. of companies & enterprises	n	n	n	n	n	n	n	n	n	n	n	n
Sector 56, Administrative & waste services	n	n	n	n	n	n	n	n	n	n	n	n
Education & Health Services	250	3.0	1.5	5,207	2.5	2.9	3,712	2.8	2.5	31,557	3.5	4.3
Sector 61, Educational services	43	10.3	4.8	1,325	5.1	3.3	663	10.2	2.3	32,405	1.9	3.6
Sector 62, Health care & social assistance	208	1.6	0.9	3,882	1.7	2.7	3,049	1.3	2.5	31,268	4.1	4.6
Leisure and Hospitality	201	0.0	0.5	2,936	3.9	0.7	1,471	-1.7	0.4	14,140	-1.0	3.2
Sector 71, Arts, entertainment, & recreation	35	3.0	2.8	335	4.4	4.6	158	-2.3	4.5	16,799	-4.7	5.0
Sector 72, Accommodation & food services	166	-0.6	0.1	2,602	3.9	0.2	1,313	-1.6	0.0	13,798	-0.5	2.8
Other Services	245	-5.8	-4.7	1,263	-5.0	-0.5	675	-5.9	-1.5	31,306	3.6	7.0
Sector 81, Other services, except public admin.	245	-5.8	-4.7	1,263	-5.0	-0.5	675	-5.9	-1.5	31,306	3.6	7.0
Government Ownership	237	-0.4	1.7	8,044	1.0	1.6	4,235	0.2	0.0	39,314	2.3	4.7
Federal Government /1	61	0.0	0.8	284	-3.0	-3.9	-	-	-	51,210	2.8	5.7
491 Postal service	35	0.0	0.1	154	-5.0	-3.3	-	-	-	43,552	1.5	4.2
Other Federal Government	26	0.0	1.6	131	-0.4	-4.6	-	-	-	60,221	3.3	7.2
State Government	89	0.0	4.0	5,024	1.0	2.3	2,372	-0.6	-0.5	43,319	3.1	5.1
Sector 61, Educational Services	4	0.0	0.0	118	0.4	-3.4	80	-0.3	-3.3	38,842	3.5	11.4
Other State Government	85	0.0	4.3	4,906	1.0	2.4	2,292	-0.6	-0.3	43,427	3.1	4.9
Local Government	87	-1.1	0.2	2,735	1.4	1.1	1,863	1.1	0.6	30,720	0.6	3.5
Sector 61, Educational Services	22	0.0	0.0	1,978	2.2	0.8	1,577	2.2	0.2	31,098	0.3	3.5
Other Local Government	65	-1.5	0.3	757	-0.8	2.1	287	-4.6	2.9	29,733	1.2	3.4

See footnotes at end of table.

Table 3: Continued

Vermont County and Industry Sectors, 2005, Total Covered

annual average with percent change from 2004 and 2000, establishments, employment, women, average wage

County / NAICS Major Industry Group	Establishments			Employment						Average Wage		
	2005	Pct change		2005	Pct change		2005	Pct change		2005	Pct change	
		From 2004	Avg/2 00-05		From 2004	Avg/2 00-05		From 2004	Avg/2 00-05		From 2004	Avg/2 00-05
		%	%		%	%		%	%		%	%
25. Windham - Total Covered	1,945	0.9	0.0	22,920	-0.3	-1.0	11,492	0.9	0.3	33,060	0.4	3.5
Private Ownership	1,812	0.9	-0.1	19,972	-0.1	-1.4	9,713	1.3	-0.2	33,330	-0.1	3.5
Goods Producing - Private	399	0.2	0.7	3,940	1.9	-2.7	1,094	0.3	-3.2	39,194	3.7	3.6
Natural Resources and Mining	29	-14.1	-6.7	258	-6.9	-7.4	125	-5.5	-8.3	26,933	4.2	4.2
Sector 11, Agriculture, forestry, fishing & hunting	n	n	n	n	n	n	n	n	n	n	n	n
Sector 21, Mining	n	n	n	n	n	n	n	n	n	n	n	n
Construction	252	1.4	2.4	1,192	8.1	3.8	155	7.8	2.6	39,179	16.3	5.7
Sector 23, Construction	252	1.4	2.4	1,192	8.1	3.8	155	7.8	2.6	39,179	16.3	5.7
Manufacturing	118	1.7	-0.5	2,490	0.1	-4.6	815	-0.1	-3.2	40,472	-1.1	2.9
Durable Goods	82	4.1	0.9	1,708	-0.5	-1.7	569	-2.4	-0.5	39,857	-0.7	4.0
Non-Durable Goods	36	-3.4	-3.3	782	1.4	-9.7	246	5.7	-8.1	41,813	-2.1	1.6
Service Providing - Private	1,413	1.1	-0.3	16,031	-0.5	-1.1	8,618	1.4	0.3	31,889	-1.2	3.6
Trade, Transportation, and Utilities	410	1.5	-0.5	5,335	-2.4	-1.8	2,118	-0.2	0.8	37,777	-4.0	2.8
Sector 42, Wholesale trade	74	-5.4	-0.8	1,413	-10.9	-2.1	442	-5.8	-2.3	39,572	-9.8	-1.3
Sector 44-45, Retail trade	286	2.2	0.1	2,872	2.2	-0.9	1,475	2.6	2.0	24,141	2.5	3.5
Sector 48-49, Transportation & warehousing	n	n	n	n	n	n	n	n	n	n	n	n
Sector 22, Utilities	n	n	n	n	n	n	n	n	n	n	n	n
Information	36	3.6	-1.8	328	-3.3	-5.7	122	-7.2	-4.6	37,669	5.3	6.0
Sector 51, Information	36	3.6	-1.8	328	-3.3	-5.7	122	-7.2	-4.6	37,669	5.3	6.0
Financial Activities	140	1.8	0.2	936	0.3	-0.1	578	-0.5	-0.5	39,602	-5.1	3.2
Sector 52, Finance and Insurance	59	1.7	-2.2	636	-1.1	-1.5	453	0.1	-1.4	44,910	-1.4	3.5
Sector 53, Real estate & rental & leasing	81	1.9	2.2	299	3.4	3.4	125	-2.5	3.2	28,314	-15.0	4.3
Professional and Business Services	256	2.6	0.9	1,196	-3.6	-2.8	541	-0.9	-3.1	40,327	-0.4	4.2
Sector 54, Professional, scientific, & technical svcs.	n	n	n	n	n	n	n	n	n	n	n	n
Sector 55, Mgt. of companies & enterprises	n	n	n	n	n	n	n	n	n	n	n	n
Sector 56, Administrative & waste services	n	n	n	n	n	n	n	n	n	n	n	n
Education & Health Services	182	2.8	0.8	4,111	2.6	1.0	3,037	4.3	1.5	33,222	2.2	4.7
Sector 61, Educational services	35	16.0	3.4	1,510	2.7	0.4	977	5.9	1.3	33,453	0.9	4.7
Sector 62, Health care & social assistance	147	0.2	0.2	2,602	2.5	1.4	2,060	3.5	1.6	33,088	3.0	4.7
Leisure and Hospitality	234	-1.7	0.4	3,424	-0.4	-1.3	1,853	0.4	0.1	17,540	2.6	3.4
Sector 71, Arts, entertainment, & recreation	35	3.0	2.8	196	20.7	4.3	110	23.7	10.1	21,400	-2.2	11.1
Sector 72, Accommodation & food services	199	-2.5	0.0	3,228	-1.4	-1.6	1,743	-0.8	-0.4	17,306	2.6	3.0
Other Services	155	-1.0	-3.7	702	1.5	-1.4	371	2.6	-2.6	21,975	2.2	3.5
Sector 81, Other services, except public admin.	155	-1.0	-3.7	702	1.5	-1.4	371	2.6	-2.6	21,975	2.2	3.5
Government Ownership	133	0.4	1.4	2,948	-1.5	2.4	1,780	-1.3	2.7	31,232	4.0	3.5
Federal Government /1	47	0.0	0.4	179	-0.2	-3.8	-	-	-	45,586	1.5	5.5
491 Postal service	35	0.0	0.6	130	-0.6	-2.3	-	-	-	40,955	-2.7	3.7
Other Federal Government	12	0.0	0.0	49	0.7	-7.1	-	-	-	57,908	10.4	9.8
State Government	16	0.0	12.2	282	1.2	9.4	93	3.3	1.0	38,553	3.0	8.2
Sector 61, Educational Services	2	0.0	0.0	54	3.0	-3.2	39	9.1	-2.0	19,657	3.6	12.1
Other State Government	14	0.0	14.9	227	0.7	14.5	54	-0.5	3.6	43,063	3.2	4.7
Local Government	70	0.7	0.3	2,488	-1.8	2.3	1,687	-1.6	2.7	29,373	4.3	2.9
Sector 61, Educational Services	25	2.0	0.0	1,744	-2.4	2.4	1,346	-1.8	2.4	29,939	4.6	2.5
Other Local Government	45	0.0	0.5	744	-0.4	1.9	341	-0.7	4.1	28,046	3.5	4.0

See footnotes at end of table.

Table 3: Continued

Vermont County and Industry Sectors, 2005, Total Covered

annual average with percent change from 2004 and 2000, establishments, employment, women, average wage

County / NAICS Major Industry Group	Establishments			Employment						Average Wage		
	2005	Pct change		2005	Pct change		2005	Pct change		2005	Pct change	
		From 2004	Avg/2 00-05		From 2004	Avg/2 00-05		From 2004	Avg/2 00-05		From 2004	Avg/2 00-05
		%	%		%	%		%	%		%	%
27. Windsor - Total Covered	2,377	-1.2	0.2	23,942	1.4	0.4	11,396	1.7	1.2	32,240	2.5	3.3
Private Ownership	2,190	-1.2	0.1	19,127	1.5	0.4	9,250	2.2	1.3	30,518	3.2	3.0
Goods Producing - Private	533	0.1	1.6	4,168	2.2	-2.2	990	2.7	-1.6	34,551	1.3	0.7
Natural Resources and Mining	48	0.0	5.2	272	6.5	1.3	77	-0.3	1.8	25,503	-6.6	-0.1
Sector 11, Agriculture, forestry, fishing & hunting	45	2.3	7.6	212	5.2	6.1	74	0.0	3.2	20,900	0.3	5.6
Sector 21, Mining	3	-25.0	-12.9	60	11.0	-9.4	4	-6.7	-14.1	41,919	-18.8	0.2
Construction	353	1.1	2.9	1,687	5.7	4.8	225	14.8	8.6	33,560	3.1	3.3
Sector 23, Construction	353	1.1	2.9	1,687	5.7	4.8	225	14.8	8.6	33,560	3.1	3.3
Manufacturing	132	-2.4	-2.6	2,210	-0.7	-6.3	688	-0.3	-4.2	36,419	1.1	0.2
Durable Goods	91	-3.7	-3.1	1,280	-1.5	-9.1	341	-4.4	-5.6	37,579	2.4	1.4
Non-Durable Goods	41	0.6	-1.4	930	0.4	-1.4	348	4.0	-2.7	34,824	-0.8	-1.9
Service Providing - Private	1,657	-1.6	-0.3	14,959	1.3	1.2	8,260	2.1	1.6	29,395	3.8	4.1
Trade, Transportation, and Utilities	450	-0.4	-1.6	4,305	2.1	1.0	1,750	4.9	0.9	28,546	1.5	3.5
Sector 42, Wholesale trade	88	1.2	-0.1	739	6.5	8.4	256	11.8	12.0	39,923	-1.8	1.9
Sector 44-45, Retail trade	310	-1.4	-2.0	2,785	-2.1	-1.5	1,303	0.9	-1.6	24,063	1.7	3.1
Sector 48-49, Transportation & warehousing	46	4.0	-1.3	700	17.2	5.9	182	32.5	10.8	31,060	0.4	2.1
Sector 22, Utilities	7	-3.4	-3.8	80	-0.2	0.6	8	-17.5	1.3	57,599	1.5	2.8
Information	46	-7.1	-2.7	603	-3.6	-3.0	331	-2.6	-3.9	45,578	5.4	5.4
Sector 51, Information	46	-7.1	-2.7	603	-3.6	-3.0	331	-2.6	-3.9	45,578	5.4	5.4
Financial Activities	156	-6.2	-0.9	818	-0.9	2.9	547	-0.8	4.0	40,237	2.1	2.2
Sector 52, Finance and Insurance	77	-10.5	-2.1	505	0.3	2.4	395	1.2	3.8	45,539	-0.3	1.8
Sector 53, Real estate & rental & leasing	79	-1.6	0.3	312	-2.8	3.7	152	-5.6	4.5	31,663	7.2	3.7
Professional and Business Services	361	1.2	3.2	1,837	4.2	3.9	822	4.3	5.7	40,764	7.3	3.6
Sector 54, Professional, scientific, & technical svcs.	244	0.9	2.9	1,271	5.7	4.4	624	3.2	6.5	47,168	6.5	2.6
Sector 55, Mgt. of companies & enterprises	n	n	n	n	n	n	n	n	n	n	n	n
Sector 56, Administrative & waste services	n	n	n	n	n	n	n	n	n	n	n	n
Education & Health Services	194	-0.9	2.5	2,914	0.3	1.3	2,325	0.2	1.2	33,989	8.1	5.9
Sector 61, Educational services	23	-5.1	2.3	318	1.5	3.0	208	7.9	6.1	40,029	8.1	3.5
Sector 62, Health care & social assistance	171	-0.3	2.6	2,596	0.1	1.1	2,117	-0.5	0.8	33,249	8.0	6.3
Leisure and Hospitality	240	-0.7	1.7	3,648	2.6	0.9	2,046	4.7	2.2	17,176	-0.5	3.2
Sector 71, Arts, entertainment, & recreation	46	5.2	7.3	417	4.1	5.3	237	3.0	7.2	18,941	-2.4	1.6
Sector 72, Accommodation & food services	195	-2.0	0.7	3,231	2.4	0.4	1,809	5.0	1.6	16,948	-0.3	3.4
Other Services	210	-5.6	-5.4	834	-5.4	-1.1	440	-5.9	-0.1	23,786	2.5	2.9
Sector 81, Other services, except public admin.	210	-5.6	-5.4	834	-5.4	-1.1	440	-5.9	-0.1	23,786	2.5	2.9
Government Ownership	188	-0.8	0.4	4,815	1.2	0.3	2,146	-0.5	0.8	39,078	0.5	4.3
Federal Government /1	67	-2.2	-1.0	1,326	-0.4	-1.4	-	-	-	55,121	-0.2	5.3
491 Postal service	53	-2.8	-0.4	492	-2.2	-4.9	-	-	-	48,587	-3.7	4.0
Other Federal Government	14	0.0	-3.2	834	0.7	1.1	-	-	-	58,973	1.4	5.7
State Government	34	0.0	5.1	644	0.8	0.9	283	-2.4	1.2	40,495	3.2	5.9
Sector 61, Educational Services	3	0.0	-3.0	81	2.0	-3.4	38	-11.7	-2.3	18,968	2.6	14.5
Other State Government	31	0.0	6.2	563	0.6	1.6	245	-0.8	1.8	43,601	3.4	4.9
Local Government	87	0.0	0.0	2,846	2.0	1.1	1,864	-0.3	0.7	31,283	1.0	3.5
Sector 61, Educational Services	27	0.0	0.0	1,991	-0.8	0.2	1,521	-4.0	-0.2	32,072	1.6	3.7
Other Local Government	60	0.0	0.0	855	9.0	3.2	343	20.7	5.5	29,444	-0.3	3.3

See footnotes at end of table.

Table 3: Continued

Vermont County and Industry Sectors, 2005, Total Covered

annual average with percent change from 2004 and 2000, establishments, employment, women, average wage

County / NAICS Major Industry Group	Establishments			Employment						Average Wage		
	2005	Pct change		Total			Women			2005	Pct change	
		From	Avg/2	2005	From	Avg/2	2005	From	Avg/2			
		2004	00-05	2004	2004	00-05	2004	2004	00-05			
%	%	%	%	%	%	%	%	%				
99. Other /3 - Total Covered	955	2.1	6.6	6,029	7.3	18.4	3,628	12.6	38.4	28,573	-4.1	-3.8
Private Ownership	953	2.1	6.7	6,021	7.3	19.6	3,628	12.6	40.4	28,549	-4.1	-3.9
Goods Producing - Private	86	-2.5	7.9	430	-13.7	2.7	50	100.0	-3.3	40,712	5.6	4.5
Natural Resources and Mining	n	n	n	n	n	n	n	n	n	n	n	n
Sector 11, Agriculture, forestry, fishing & hunting	n	n	n	n	n	n	n	n	n	n	n	n
Sector 21, Mining	-	-	-	-	-	-	-	-	-	-	-	-
Construction	72	-2.0	10.9	376	-14.3	2.2	29	46.2	-9.2	39,485	11.1	4.1
Sector 23, Construction	72	-2.0	10.9	376	-14.3	2.2	29	46.2	-9.2	39,485	11.1	4.1
Manufacturing	n	n	n	n	n	n	n	n	n	n	n	n
Durable Goods	n	n	n	n	n	n	n	n	n	n	n	n
Non-Durable Goods	n	n	n	n	n	n	n	n	n	n	n	n
Service Providing - Private	867	2.5	6.6	5,591	9.4	21.9	3,578	11.9	42.6	27,614	-4.5	-4.7
Trade, Transportation, and Utilities	367	1.0	5.9	908	3.1	0.1	266	7.3	-0.7	62,974	-1.1	8.5
Sector 42, Wholesale trade	290	0.8	7.0	709	0.2	5.1	196	0.0	6.3	69,915	1.5	6.0
Sector 44-45, Retail trade	60	5.3	0.9	163	24.9	-11.5	68	46.0	-11.9	37,557	-14.4	7.5
Sector 48-49, Transportation & warehousing	17	-9.2	6.7	36	-16.0	-6.8	2	-70.0	-11.4	41,396	7.2	12.0
Sector 22, Utilities	-	-	-	-	-	-	-	-	-	-	-	-
Information	30	-13.7	0.3	101	4.7	-4.4	23	25.7	0.0	30,483	1.7	8.8
Sector 51, Information	30	-13.7	0.3	101	4.7	-4.4	23	25.7	0.0	30,483	1.7	8.8
Financial Activities	49	4.3	8.6	104	-13.9	-0.2	36	-20.7	8.8	61,746	21.8	17.8
Sector 52, Finance and Insurance	n	n	n	n	n	n	n	n	n	n	n	n
Sector 53, Real estate & rental & leasing	n	n	n	n	n	n	n	n	n	n	n	n
Professional and Business Services	335	7.2	8.1	1,050	-4.6	7.7	409	-4.5	15.8	47,625	5.5	8.3
Sector 54, Professional, scientific, & technical svcs.	n	n	n	n	n	n	n	n	n	n	n	n
Sector 55, Mgt. of companies & enterprises	n	n	n	n	n	n	n	n	n	n	n	n
Sector 56, Administrative & waste services	103	7.3	5.0	545	-3.7	6.5	227	-3.6	14.2	33,180	-3.7	6.5
Education & Health Services	35	0.0	12.7	3,250	19.5	105.4	2,745	15.9	121.9	10,214	-1.6	-12.7
Sector 61, Educational services	13	4.0	16.7	21	2.5	9.4	13	15.9	8.4	24,898	22.3	51.1
Sector 62, Health care & social assistance	22	-2.3	10.6	3,229	19.6	111.9	2,732	15.9	129.9	10,120	-1.8	-15.2
Leisure and Hospitality	15	13.2	4.6	49	-12.7	-6.7	17	76.9	-8.1	36,759	10.7	7.1
Sector 71, Arts, entertainment, & recreation	n	n	n	n	n	n	n	n	n	n	n	n
Sector 72, Accommodation & food services	n	n	n	n	n	n	n	n	n	n	n	n
Other Services	37	-8.7	1.3	129	-5.4	15.6	83	0.9	51.0	20,941	-1.1	-15.3
Sector 81, Other services, except public admin.	37	-8.7	1.3	129	-5.4	15.6	83	0.9	51.0	20,941	-1.1	-15.3
Government Ownership	2	0.0	-12.9	8	19.7	-43.7	0	0.0	-100.0	47,954	-2.0	7.3
Federal Government /1	2	0.0	0.0	8	19.7	38.3	-	-	-	47,954	-2.0	21.6
491 Postal service	1	0.0	0.0	4	55.2	20.1	-	-	-	21,852	20.4	3.9
Other Federal Government	1	0.0	0.0	4	-2.1	0.0	-	-	-	73,491	8.2	0.0

1 Female employment is not collected by Federal government.

N=Data is confidential. na= Data is unavailable

2 Avg is compounded annual average percent change.

(-) Zero Reporting Units, Employment, or wages

3 Location of business is statewide, countywide.

NOTE: detail may not add to totals due to rounding

NOTE: Changes may be influenced by reclassification of specific firms and or improved multiple worksites information.

Table 4

Vermont Size Class By NAICS Based Industry, 2005, private ownership
annual average establishments and annual average employment

Sector	Total	Size of establishments								
		4 or fewer workers	5 to 9 workers	10 to 19 workers	20 to 49 workers	50 to 99 workers	100 to 249 workers	250 to 499 workers	500 to 999 workers	1,000 plus workers
Total Private										
Annual average establishments	22,768	13,247	4,465	2,676	1,653	408	246	44	23	7
% of total	100.0	58.2	19.6	11.8	7.3	1.8	1.1	0.2	0.1	0.0
Annual average employment	249,792	27,258	30,077	36,463	48,859	27,623	35,743	14,769	15,070	13,931
% of total	100.0	10.9	12.0	14.6	19.6	11.1	14.3	5.9	6.0	5.6
11. Agriculture, Forestry, Fishing and Hunting										
Annual average establishments	357	201	94	50	12	1	---	---	---	---
% of total	100.0	56.2	26.2	14.0	3.4	0.3	---	---	---	---
Annual average employment	2,315	n	677	702	331	n	---	---	---	---
% of total	100.0	n	29.2	30.3	14.3	n	---	---	---	---
21. Mining										
Annual average establishments	60	36	11	5	4	3	1	---	---	---
% of total	100.0	59.8	18.4	8.4	6.7	5.0	1.7	---	---	---
Annual average employment	695	n	75	93	116	205	n	---	---	---
% of total	100.0	n	10.8	13.4	16.7	29.5	n	---	---	---
22. Utilities										
Annual average establishments	48	17	9	7	8	3	2	2	---	---
% of total	100.0	35.4	18.8	14.6	16.7	6.3	4.2	4.2	---	---
Annual average employment	1,703	39	63	104	220	269	n	n	---	---
% of total	100.0	2.3	3.7	6.1	12.9	15.8	n	n	---	---
23. Construction										
Annual average establishments	3,118	2,318	468	219	88	22	5	---	---	---
% of total	100.0	74.3	15.0	7.0	2.8	0.7	0.2	---	---	---
Annual average employment	16,867	5,025	3,330	3,392	2,710	1,635	775	---	---	---
% of total	100.0	29.8	19.7	20.1	16.1	9.7	4.6	---	---	---
31-33. Manufacturing										
Annual average establishments	1,196	510	202	163	169	70	68	8	5	1
% of total	100.0	42.6	16.9	13.6	14.2	5.9	5.7	0.7	0.4	0.1
Annual average employment	36,840	n	1,383	2,225	5,238	4,908	10,310	2,788	3,119	n
% of total	100.0	n	3.8	6.0	14.2	13.3	28.0	7.6	8.5	n
42. Wholesale Trade										
Annual average establishments	1,342	906	206	114	89	18	8	---	1	---
% of total	100.0	67.6	15.3	8.5	6.6	1.3	0.6	---	0.1	---
Annual average employment	10,072	n	1,391	1,573	2,643	1,201	1,120	---	n	---
% of total	100.0	n	13.8	15.6	26.2	11.9	11.1	---	n	---
44-45. Retail Trade										
Annual average establishments	3,654	1,549	1,037	644	314	62	46	3	---	---
% of total	100.0	42.4	28.4	17.6	8.6	1.7	1.3	0.1	---	---
Annual average employment	40,464	3,742	7,084	8,612	9,453	4,274	6,473	827	---	---
% of total	100.0	9.2	17.5	21.3	23.4	10.6	16.0	2.0	---	---
48-49. Transportation and Warehousing										
Annual average establishments	562	315	89	56	68	23	10	1	---	---
% of total	100.0	56.1	15.9	10.0	12.0	4.0	1.8	0.2	---	---
Annual average employment	6,927	n	598	760	1,924	1,467	1,244	n	---	---
% of total	100.0	n	8.6	11.0	27.8	21.2	18.0	n	---	---
51. Information										
Annual average establishments	504	258	101	67	58	11	7	2	---	---
% of total	100.0	51.1	20.0	13.4	11.6	2.2	1.4	0.4	---	---
Annual average employment	6,232	n	655	924	1,733	767	1,174	n	---	---
% of total	100.0	n	10.5	14.8	27.8	12.3	18.8	n	---	---

See footnotes at end of table.

Table 4

Vermont Size Class By NAICS Based Industry, 2005, private ownership
annual average establishments and annual average employment

Sector	Total	Size of establishments								
		4 or fewer workers	5 to 9 workers	10 to 19 workers	20 to 49 workers	50 to 99 workers	100 to 249 workers	250 to 499 workers	500 to 999 workers	1,000 plus workers
52. Finance and Insurance										
Annual average establishments	958	514	263	92	54	25	8	2	1	---
% of total	100.0	53.7	27.5	9.6	5.6	2.6	0.8	0.2	0.1	---
Annual average employment	9,651	1,091	1,636	1,219	1,624	1,772	1,029	n	n	---
% of total	100.0	11.3	17.0	12.6	16.8	18.4	10.7	n	n	---
53. Real Estate, Rental and Leasing										
Annual average establishments	757	550	120	68	18	1	---	---	---	---
% of total	100.0	72.7	15.8	9.0	2.4	0.1	---	---	---	---
Annual average employment	3,263	n	757	873	508	n	---	---	---	---
% of total	100.0	n	23.2	26.7	15.6	n	---	---	---	---
54. Professional, scientific and Technical Services										
Annual average establishments	2,602	1,961	361	182	70	21	4	3	---	---
% of total	100.0	75.4	13.9	7.0	2.7	0.8	0.2	0.1	---	---
Annual average employment	12,797	3,027	2,339	2,350	1,919	1,420	656	1,086	---	---
% of total	100.0	23.7	18.3	18.4	15.0	11.1	5.1	8.5	---	---
55. Management of Companies and Enterprises										
Annual average establishments	22	16	4	1	---	1	1	---	---	---
% of total	100.0	69.7	18.0	3.4	---	4.5	4.5	---	---	---
Annual average employment	308	27	27	n	---	n	n	---	---	---
% of total	100.0	8.7	8.7	n	---	n	n	---	---	---
56. Administrative and Waste Services										
Annual average establishments	1,131	791	153	96	64	17	9	---	1	---
% of total	100.0	70.0	13.5	8.4	5.6	1.5	0.8	---	0.1	---
Annual average employment	8,742	n	1,036	1,247	1,949	1,149	1,137	---	n	---
% of total	100.0	n	11.8	14.3	22.3	13.1	13.0	---	n	---
61. Educational Services										
Annual average establishments	320	148	49	46	45	11	16	3	2	1
% of total	100.0	46.3	15.1	14.4	13.9	3.4	5.0	0.9	0.6	0.3
Annual average employment	9,064	302	319	581	1,296	689	2,422	990	n	n
% of total	100.0	3.3	3.5	6.4	14.3	7.6	26.7	10.9	n	n
62. Health Care and Social Assistance										
Annual average establishments	1,885	806	458	307	186	58	45	16	8	3
% of total	100.0	42.7	24.3	16.3	9.9	3.1	2.4	0.8	0.4	0.2
Annual average employment	41,728	1,756	3,027	4,150	5,360	3,758	6,485	5,510	6,076	5,607
% of total	100.0	4.2	7.3	9.9	12.8	9.0	15.5	13.2	14.6	13.4
71. Arts, Entertainment and Recreation										
Annual average establishments	408	260	66	41	32	5	3	1	---	---
% of total	100.0	63.7	16.2	10.0	7.8	1.2	0.7	0.2	---	---
Annual average employment	3,868	n	535	579	855	293	284	n	---	---
% of total	100.0	n	13.8	15.0	22.1	7.6	7.3	n	---	---
72. Accommodation and Food Services										
Annual average establishments	1,817	664	370	378	330	53	14	2	5	2
% of total	100.0	36.5	20.3	20.8	18.2	2.9	0.8	0.1	0.3	0.1
Annual average employment	29,196	1,902	2,566	5,212	9,707	3,273	2,110	n	2,628	n
% of total	100.0	6.5	8.8	17.9	33.2	11.2	7.2	n	9.0	n
81. Other services, except public administration										
Annual average establishments	2,028	1,430	406	142	45	4	---	1	---	---
% of total	100.0	70.5	20.0	7.0	2.2	0.2	---	0.0	---	---
Annual average employment	9,059	n	2,581	1,858	1,274	280	---	n	---	---
% of total	100.0	n	28.5	20.5	14.1	3.1	---	n	---	---

Note: Detail may not add to totals due to rounding.

n = Data is confidential.

Dash = Zero establishments.

Source: Quarterly Census of Employment and Wages, produced in cooperation with the U.S. Bureau of Labor Statistics
released: December 2009

Table 5

Vermont Size Class By County, 2005, private ownership
annual average establishments and annual average employment

County	Total	Size of establishments								
		4 or fewer workers	5 to 9 workers	10 to 19 workers	20 to 49 workers	50 to 99 workers	100 to 249 workers	250 to 499 workers	500 to 999 workers	1,000 plus workers
Total Private										
Annual average establishments	22,768	13,247	4,465	2,676	1,653	408	246	44	23	7
% of total	100.0	58.2	19.6	11.8	7.3	1.8	1.1	0.2	0.1	0.0
Annual average employment	249,792	27,258	30,077	36,463	48,859	27,623	35,743	14,769	15,070	13,931
% of total	100.0	10.9	12.0	14.6	19.6	11.1	14.3	5.9	6.0	5.6
01. Addison										
Annual average establishments	1,204	731	238	140	65	18	10	1	1	1
% of total	100.0	60.7	19.7	11.6	5.4	1.5	0.8	0.1	0.1	0.1
Annual average employment	12,012	1,562	1,614	1,920	1,983	1,217	1,459	n	n	n
% of total	100.0	13.0	13.4	16.0	16.5	10.1	12.1	n	n	n
03. Bennington										
Annual average establishments	1,506	856	329	179	102	14	22	3	2	---
% of total	100.0	56.8	21.8	11.9	6.8	0.9	1.5	0.2	0.1	---
Annual average employment	15,899	n	2,225	2,432	3,017	933	3,148	896	n	---
% of total	100.0	n	14.0	15.3	19.0	5.9	19.8	5.6	n	---
05. Caledonia										
Annual average establishments	936	494	224	127	65	13	10	3	---	---
% of total	100.0	52.8	24.0	13.5	6.9	1.4	1.1	0.3	---	---
Annual average employment	9,624	1,075	1,505	1,891	1,902	737	1,612	903	---	---
% of total	100.0	11.2	15.6	19.6	19.8	7.7	16.8	9.4	---	---
07. Chittenden										
Annual average establishments	5,478	2,837	1,093	763	529	143	92	14	6	2
% of total	100.0	51.8	19.9	13.9	9.7	2.6	1.7	0.3	0.1	0.0
Annual average employment	80,084	n	7,373	10,487	16,064	9,990	12,799	4,656	3,881	n
% of total	100.0	n	9.2	13.1	20.1	12.5	16.0	5.8	4.8	n
09. Essex										
Annual average establishments	132	86	30	10	5	---	1	1	---	---
% of total	100.0	65.0	22.3	7.4	3.8	---	0.8	0.8	---	---
Annual average employment	1,174	170	194	144	104	---	n	n	---	---
% of total	100.0	14.5	16.5	12.3	8.9	---	n	n	---	---
11. Franklin										
Annual average establishments	1,093	610	245	133	65	20	16	3	1	---
% of total	100.0	55.8	22.4	12.2	5.9	1.8	1.5	0.3	0.1	---
Annual average employment	12,033	n	1,625	1,747	1,935	1,360	2,677	880	n	---
% of total	100.0	n	13.5	14.5	16.1	11.3	22.2	7.3	n	---
13. Grand Isle										
Annual average establishments	198	146	38	9	5	---	---	---	---	---
% of total	100.0	73.9	19.4	4.3	2.4	---	---	---	---	---
Annual average employment	848	326	269	134	119	---	---	---	---	---
% of total	100.0	38.5	31.7	15.8	14.1	---	---	---	---	---

See footnotes at end of table.

Table 5

Vermont Size Class By County, 2005, private ownership
annual average establishments and annual average employment

County	Total	Size of establishments								
		4 or fewer workers	5 to 9 workers	10 to 19 workers	20 to 49 workers	50 to 99 workers	100 to 249 workers	250 to 499 workers	500 to 999 workers	1,000 plus workers
15. Lamoille										
Annual average establishments	1,018	606	209	116	62	15	7	1	2	---
% of total	100.0	59.5	20.6	11.4	6.1	1.5	0.7	0.1	0.2	---
Annual average employment	9,366	1,293	1,369	1,539	1,742	1,070	1,020	n	n	---
% of total	100.0	13.8	14.6	16.4	18.6	11.4	10.9	n	n	---
17. Orange										
Annual average establishments	769	496	145	64	47	14	3	1	---	---
% of total	100.0	64.5	18.8	8.3	6.1	1.8	0.4	0.1	---	---
Annual average employment	5,963	n	999	870	1,449	911	334	n	---	---
% of total	100.0	n	16.7	14.6	24.3	15.3	5.6	n	---	---
19. Orleans										
Annual average establishments	862	537	160	93	50	15	2	5	---	---
% of total	100.0	62.3	18.6	10.7	5.8	1.7	0.2	0.6	---	---
Annual average employment	7,865	n	1,114	1,310	1,495	941	n	1,606	---	---
% of total	100.0	n	14.2	16.7	19.0	12.0	n	20.4	---	---
21. Rutland										
Annual average establishments	2,316	1,327	475	255	188	44	22	2	3	1
% of total	100.0	57.3	20.5	11.0	8.1	1.9	0.9	0.1	0.1	0.0
Annual average employment	25,205	2,775	3,204	3,365	5,429	3,032	3,390	n	2,058	n
% of total	100.0	11.0	12.7	13.4	21.5	12.0	13.5	n	8.2	n
23. Washington										
Annual average establishments	2,303	1,324	446	297	161	41	26	4	4	---
% of total	100.0	57.5	19.4	12.9	7.0	1.8	1.1	0.2	0.2	---
Annual average employment	24,600	2,807	3,028	4,110	4,649	2,668	3,653	1,351	2,335	---
% of total	100.0	11.4	12.3	16.7	18.9	10.8	14.8	5.5	9.5	---
25. Windham										
Annual average establishments	1,812	1,057	351	214	130	32	22	4	2	1
% of total	100.0	58.3	19.4	11.8	7.2	1.7	1.2	0.2	0.1	0.1
Annual average employment	19,972	2,275	2,328	2,756	3,664	2,241	3,276	1,489	n	n
% of total	100.0	11.4	11.7	13.8	18.3	11.2	16.4	7.5	n	n
27. Windsor										
Annual average establishments	2,190	1,310	420	247	162	36	12	2	---	1
% of total	100.0	59.8	19.2	11.3	7.4	1.6	0.5	0.1	---	0.0
Annual average employment	19,127	2,748	2,828	3,367	4,729	2,326	1,759	n	---	n
% of total	100.0	14.4	14.8	17.6	24.7	12.2	9.2	n	---	n
99. County unspecified										
Annual average establishments	953	832	63	32	17	4	2	---	2	1
% of total	100.0	87.3	6.6	3.3	1.8	0.4	0.2	---	0.2	0.1
Annual average employment	6,021	1,098	405	392	578	197	n	---	n	n
% of total	100.0	18.2	6.7	6.5	9.6	3.3	n	---	n	n

Note: Detail may not add to totals due to rounding.

n = Data is confidential.

Dash = Zero establishments.

Source: Quarterly Census of Employment and Wages, produced in cooperation with the U.S. Bureau of Labor Statistics
 released: December 2009

Appendix I: Glossary of Terms

Annual Average Employment or Jobs:

The employment figures in this report are a simple average of the reported monthly employment figures for the calendar year. In some industries where there are significant seasonal changes in the number employed during the year, the annual average employment will differ significantly from the level of employment for any part of the year. Employment is the same as the number of jobs.

Annual Average Wage:

The annual average wage is a figure computed from total wages and average employment (total annual wages/annual average employment). Because it is an average of aggregate data the annual average wage should not be used to estimate hourly wages. Employers do not report hourly information. Employment and wage data cover hourly workers, salaried workers, and persons paid on a commission basis and who may be working full-time, part-time, or overtime. The annual average employment and wage figures can be influenced by the mix of these items and should be interpreted with caution.

Confidentiality Standards:

Confidentiality standards apply to private sector data only. The publication of data that would disclose an individual firm's employment or wage information is prohibited under the Bureau of Labor Statistic's guidelines of confidentiality. Aggregate data is not published if it represents fewer than three private employers or if one private employer represents 80% or more of the data. In addition, Vermont does not publish data with fewer than ten private sector employees. All government data is publishable.

Covered Employer:

An employer is covered if wages of at least \$1,500 are paid during a calendar quarter; or employs at least one worker for some part of a day in each of 20 different weeks in a calendar year; or is required to pay Federal Unemployment Tax because individuals in another state(s) were employed or for some other reason; or pays cash wages of \$1,000 or more in any calendar quarter for domestic services in a private home; or pays cash wages of \$20,000 or more in any calendar quarter for agricultural services, or employ ten or more workers in agricultural employment; or furnishes employment in a charitable, or educational environment to four or more workers for some part of a day in each of 20 different weeks in a calendar year; or is the State or any political subdivision thereof; or voluntarily elects to provide unemployment coverage to workers even though it is not required.

Covered Employment and Wages:

The data in this report refers to the employees and their wages in firms subject to the Vermont Unemployment Compensation Law, or for federal employees, the Federal Unemployment Compensation Law. Workers who are not included are the self-employed, firm owners not incorporated and the following employee groups: elected officials, nonprofit religious, charitable and educational organizations, unpaid family members, farm (with some exceptions) and railroad (see definition for Covered Employer) workers.

Data Source:

Data is compiled from quarterly reports submitted by employers. The reports contain monthly employment information for the pay period that includes the 12th of the month and total wages paid in the quarter.

Establishments, Worksites and Employers:

A reporting unit is the smallest economic unit for which data is reported. An establishment is an economic unit, such as a farm, factory, or store, which produces goods or provides services at a single physical worksite and engaged, predominantly, in one type of economic activity. Most employers operate only one establishment or place of business so all of their activity is reported under one reporting unit. Employers who operate more than one establishment in the state are requested to report each worksite separately. In some cases the employer aggregates the worksites into several units, though not at the establishment level. Occasionally, a single physical location encompasses two or more distinct and significant activities that, if possible, are reported as separate units. In these cases, a reporting unit is only one worksite, or a group of worksites, or part of a worksite and not all of an employers' activity in the state.

Growth or Increase in the Number of Jobs:

All information referring to growth in this report is based on net changes. The amount of growth during any time period is equal to the number of jobs (or wages) gained minus the number of jobs (wages) lost.

Industry Groups or NAICS:

Beginning with the publication of 2001 annual data, the North American Industry Classification System (NAICS) is used to group industries. NAICS replaced the Standard Industrial Classification (SIC) system in the U.S., and is used by all North American governmental and many private organizations for the purposes of uniformity in presenting statistical data. The NAICS classification structure groups industries based on similar production processes. For more information on NAICS, please visit the Bureau of Labor Statistics website, <http://www.bls.gov/bls/naics.htm>.

Ownership - Private and Governmental:

The ownership of establishments is classified as either Private or Government. Government employers are further classified by level of government: Local (operated by town), State (operated by the State) or Federal (operated by the United States Government).

Reclassification of Specific Firms:

In an active economy many firms change their physical location and some change their primary business activity. To maintain and update location and activity information all employers are surveyed during a three year cycle. The resulting changes are effective at the start of the next calendar year. While this improves the accuracy of data analysis, it also introduces fluctuations in the data from year to year due to these administrative changes.

Seasonal Activity:

Seasonal activity in Vermont industries produces significant variation in employment levels during the year. The annual average provides a convenient summary of the year's employment and wages. By definition, however, it obscures the peaks and valleys.

Size Class:

Each reporting unit is assigned to one of nine size class categories based upon March employment. It is important to note that for multi-establishment employers size class is based on each worksite, not the firm's total employment.

Unclassified County Data:

A small percentage of covered employment and total wages are not classified by county. In these cases the employees' work is not performed at a given physical location, e.g., traveling salespeople.

Appendix II: North American Industry Classification System (NAICS)

Two Digit Sector and Three Digit Subsector

- 11 Agriculture, forestry, fishing and hunting**
 - 111 Crop production
 - 112 Animal production
 - 113 Forestry and logging
 - 114 Fishing, hunting and trapping
 - 115 Agriculture and forestry support activities
- 21 Mining**
 - 211 Oil and gas extraction
 - 212 Mining, except oil and gas
 - 213 Support activities for mining
- 22 Utilities**
 - 221 Utilities
- 23 Construction**
 - 236 Construction of buildings
 - 237 Heavy and civil engineering construction
 - 238 Specialty trade contractors
- 31-33 Manufacturing**
 - 311 Food manufacturing
 - 312 Beverage and tobacco product manufacturing
 - 313 Textile mills
 - 314 Textile product mills
 - 315 Apparel manufacturing
 - 316 Leather and allied product manufacturing
 - 321 Wood product manufacturing
 - 322 Paper manufacturing
 - 323 Printing and related support activities
 - 324 Petroleum and coal products manufacturing
 - 325 Chemical manufacturing
 - 326 Plastics and rubber products manufacturing
 - 327 Nonmetallic mineral product manufacturing
 - 331 Primary metal manufacturing
 - 332 Fabricated metal product manufacturing
 - 333 Machinery manufacturing
 - 334 Computer and electronic product manufacturing
 - 335 Electrical equipment and appliance mfg.
 - 336 Transportation equipment manufacturing
 - 337 Furniture and related product manufacturing
 - 339 Miscellaneous manufacturing
- 42 Wholesale trade**
 - 423 Merchant wholesalers, durable goods
 - 424 Merchant wholesalers, nondurable goods
 - 425 Electronic markets and agents and brokers
- 44-45 Retail trade**
 - 441 Motor vehicle and parts dealers
 - 442 Furniture and home furnishings stores
 - 443 Electronics and appliance stores
- 44-45 Retail trade (continued)**
 - 444 Building material and garden supply stores
 - 445 Food and beverage stores
 - 446 Health and personal care stores
 - 447 Gasoline stations
 - 448 Clothing and clothing accessories stores
 - 451 Sporting goods, hobby, book and music stores
 - 452 General merchandise stores
 - 453 Miscellaneous store retailers
 - 454 Nonstore retailers
- 48-49 Transportation and warehousing**
 - 481 Air transportation
 - 482 Rail transportation
 - 483 Water transportation
 - 484 Truck transportation
 - 485 Transit and ground passenger transportation
 - 486 Pipeline transportation
 - 487 Scenic and sightseeing transportation
 - 488 Support activities for transportation
 - 491 Postal service
 - 492 Couriers and messengers
 - 493 Warehousing and storage
- 51 Information**
 - 511 Publishing industries, except Internet
 - 512 Motion picture and sound recording industries
 - 515 Broadcasting, except Internet
 - 516 Internet publishing and broadcasting
 - 517 Telecommunications
 - 518 ISPs, search portals, and data processing
 - 519 Other information services
- 52 Finance and insurance**
 - 521 Monetary authorities - central bank
 - 522 Credit intermediation and related activities
 - 523 Securities, commodity contracts, investments
 - 524 Insurance carriers and related activities
 - 525 Funds, trusts, and other financial vehicles
- 53 Real estate and rental and leasing**
 - 531 Real estate
 - 532 Rental and leasing services
 - 533 Lessors of nonfinancial intangible assets
- 54 Professional and technical services**
 - 541 Professional and technical services
- 55 Management of companies and enterprises**
 - 551 Management of companies and enterprises
- 56 Administrative and waste services**
 - 561 Administrative and support services
 - 562 Waste management and remediation services

Appendix II: North American Industry Classification System (NAICS) - (continued)
Two Digit Sector and Three Digit Subsector

61 Educational services	81 Other services, except public administration (continued)
611 Educational services	811 Repair and maintenance
62 Health care and social assistance	812 Personal and laundry services
621 Ambulatory health care services	813 Membership associations and organizations
622 Hospitals	814 Private households
623 Nursing and residential care facilities	92 Public administration
624 Social assistance	921 Executive, legislative and general government
71 Arts, entertainment, and recreation	922 Justice, public order, and safety activities
711 Performing arts and spectator sports	923 Administration of human resource programs
712 Museums, historical sites, zoos, and parks	924 Administration of environmental programs
713 Amusements, gambling, and recreation	925 Community and housing program administration
72 Accommodation and food services	926 Administration of economic programs
721 Accommodation	927 Space research and technology
722 Food services and drinking places	928 National security and international affairs
81 Other services, except public administration	999 Unclassified